



WILO-CronoLine-IL

Single stage centrifugal pumps, inline design with mechanical seal

Duty Charts

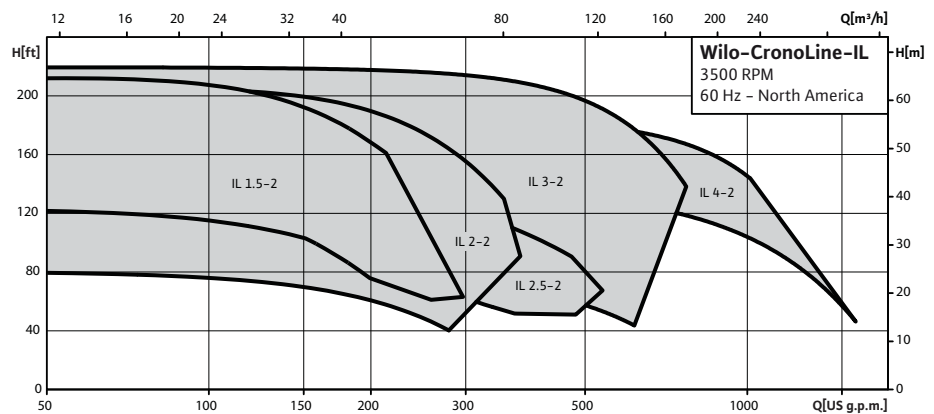
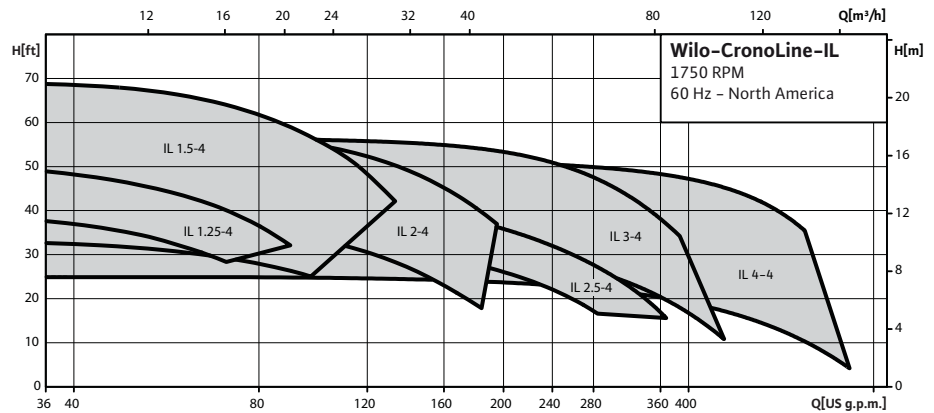


Table of Contents

4 Pole (1,750 RPM)

IL 1.25-40/70-4	
IL 1.25-50/90-4	2
IL 1.5-35/100-4	
IL 1.5-45/110-4	4
IL 1.5-55/110-4	
IL 1.5-70/130-4	6
IL 2-40/180-4	8
IL 2-45/170-4	
IL 2-60/190-4	10
IL 2.5-35/280-4	
IL 2.5-45/360-4	12
IL 3-35/450-4	
IL 3-40/300-4	14
IL 3-60/380-4	16
IL 4-25/700-4	18
IL 4-55/620-4	20

2 Pole (3,450 RPM)

IL 1.5-120/260-2	
IL 1.5-150/300-2	22
IL 1.5-130/200-2	
IL 1.5-150/220-2	
IL 1.5-210/220-2	24
IL 2-80/280-2	26
IL 2-110/280-2	
IL 2-130/320-2	
IL 2-170/380-2	28
IL 2-200/350-2	30
IL 2.5-85/480-2	
IL 2.5-110/570-2	32
IL 2.5-190/370-2	
IL 2.5-110/410-2	
IL 2.5-140/470-2	34
IL 3-80/620-2	
IL 3-100/660-2	36
IL 3-130/650-2	38
IL 3-220/770-2	40
IL 4-140/1600-2	42
IL 4-190/1000-2	44

Application

Hot water heating systems, chilled water air conditioning systems, closed cooling circuits, industrial circulation systems

Equipment/ Function

Inline bronze fitted (std) or optional all iron pump
Coupled to motor via split coupling
Standard NEMA frame Baldor motor

Scope of delivery

Pump and motor (optional pump end only)
Installation and operating instructions

Materials

Pump volute: cast iron
Impeller: bronze (cast iron optional)
Shaft: 316L Stainless steel
Mechanical Seal: Q1Q1X4GG (slicium carbide seal face, HNBR elastomers); other mechanical seals on request

Description/construction

Single stage low pressure centrifugal, inline design with mechanical seal
Baldor NEMA standard motors

Design

Single stage inline, flanged, long coupled mechanical sealed dry rotor

Technical Data

Temperature range: -5°F to 285 °F (-20°C to 140°C)
Power supply (smaller HP): 1~115/208-230V, 60Hz
Power supply (larger HP): 3~208-230/460, 575V, 60Hz
Motor options: ODP, TEFC, 2 and 4 pole available (3,450 and 1,750 RPM)
Flange connection: 125# ANSI (250# optional)
Maximum operating pressure 250 PSI (16 bar), minimum inlet pressure NPSHreq dependant (see detailed curves)
Integral suction diffuser cast in volute inlet
Pump flanges 125# raised face ANSI std (250# ANSI optional)
Cataphoresis coating for corrosion protection
Impeller trims for specific applications
Pump feet drilled and tapped for ease of installation
All bolts 'non-metric'
Motor stool includes extra tappings for removal from volute (jack screws)
Couplings include spacer and does not require dial indicators for alignment
Integrated suction straightening vane



WILO IL Submittal

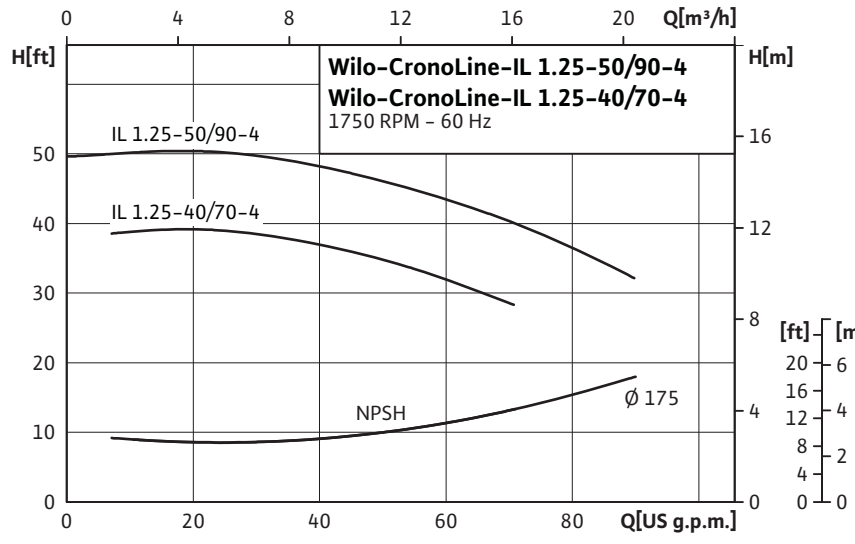
IL 1.25-50/90-4 & IL 1.25-40/70-4



Pumpen Intelligenz.

Project:	
Engineer:	
Contractor:	
Submitted By:	Date:
Approved By:	Date:

Tag #	Model #	Flow	Head	Hp	Volt/Phase	Motor Enclosure	RPM
	IL 1.25-50/90-4			1½			1750 (4 pole)
	IL 1.25-40/70-4			1			1750 (4 pole)

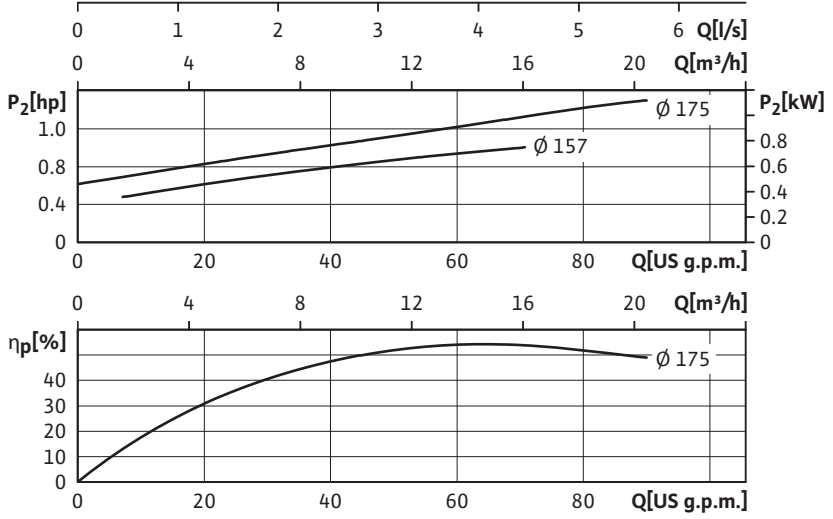


Applications

- Max Temp: 20°F to 250°F (-4°C to 120°C)
 285°F (140°C) optional seal
- Max Ambient Temp: 104°F (40°C)
- Max Working Press: 175 PSI (12 Bar)
 250 PSI (17 Bar) on request
- Fluids: Water or Water/Glycol up to 50%
 Other Fluids - Contact WILO

Materials of Construction

- Impeller: Cast Bronze
 Cast Iron (optional)
- Shaft: 316L Stainless Steel
- Volute: Cast Iron (Cataphoresis Coated)
- Seal (Std): Silicon Carbide on Silicon Carbide
 HNBR Elastomer
 CrNiMo Spring



WILO USA LLC
 1290 N 25th Ave
 Melrose Park, IL 60160
 Tel: (866) 945-6872
 Fax: (708) 338-9455

www.WILO-USA.com

WILO Canada Inc.
 Bay 7-2915 10th Ave. NE
 Calgary, Alberta T2A 5L4
 Tel: (866) 945-6236
 Fax: (403) 277-9456

www.WILO-CANADA.com



WILO IL Submittal

IL 1.25-50/90-4 & IL 1.25-40/70-4



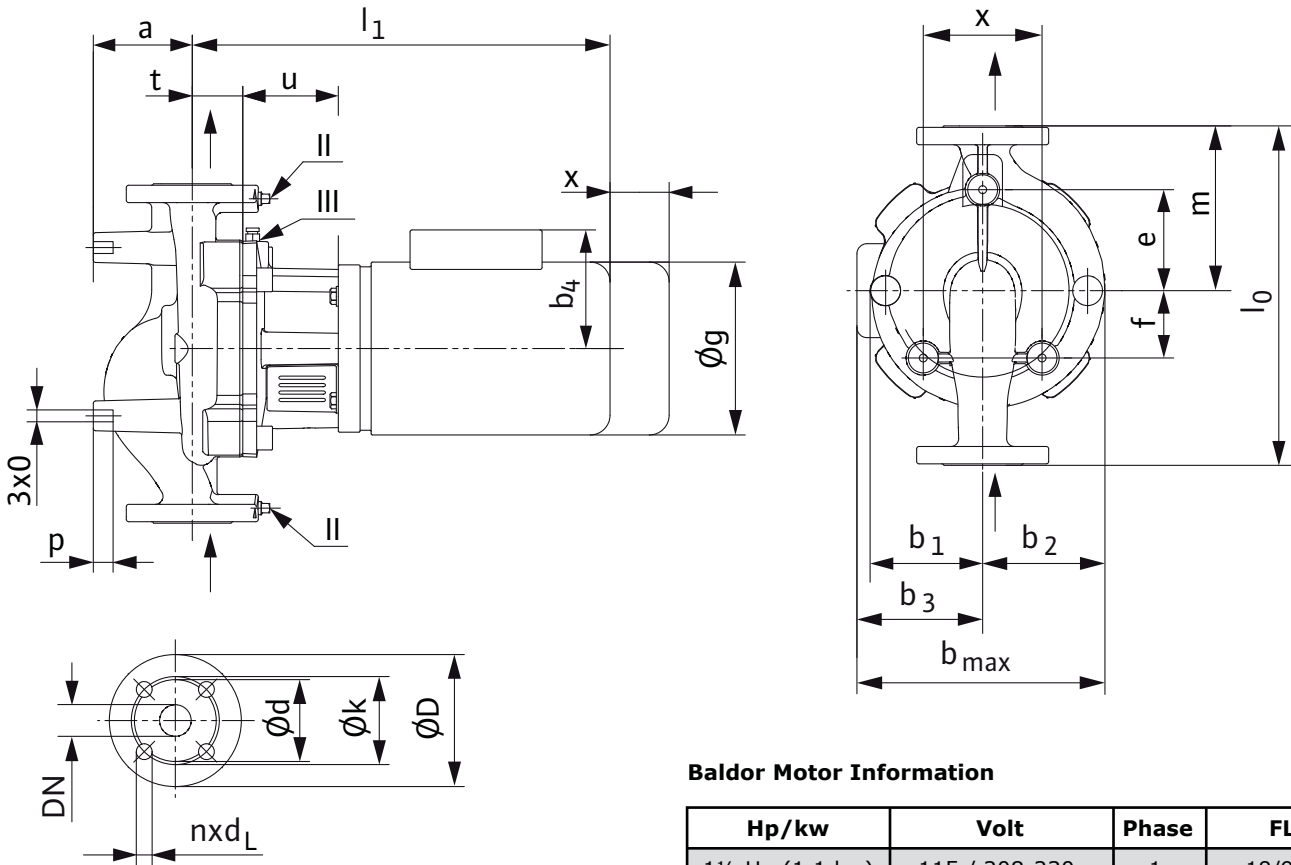
Pumpen Intelligenz.

Pump Dimensions for: IL 1.25-50/90-4

	l_0	a	b_1	b_2	b_3 1~	b_3 3~	b_{max} 1~	b_{max} 3~	c	e	f	g 1~	g 3~	l_1 1~	l_1 3~	m	o	p	x	Wt max
Inch	13½	4	4½	4¾	5⅝	5⅝	10½	10½	4¾	4	2⅞	7¼	7⅞	17⅞	16⅞	6⅝	¾	¾	3⅝	101 lbs.
mm	343	100	114	124	142	142	266	266	120	102	68	183	182	453	428	166	10	20	90	46 kg.

Pump Dimensions for: IL 1.25-40/70-4

	l_0	a	b_1	b_2	b_3 1~	b_3 3~	b_{max} 1~	b_{max} 3~	c	e	f	g 1~	g 3~	l_1 1~	l_1 3~	m	o	p	x	Wt max
Inch	13½	4	4½	4¾	5⅝	5⅝	10½	10½	4¾	4	2⅞	7¼	7⅞	17⅞	16⅞	6⅝	¾	¾	3⅝	101 lbs.
mm	343	100	114	124	142	142	266	266	120	102	68	183	182	453	428	166	10	20	90	46 kg.



Flange Dimensions: 1.25" 125 ANSI (250 # optional)

Details	Flange	D	d	k (BCD)	n x d _L
Inch	1¼	5¼	3	3½	4 x ⅝
mm	32	132	78	89	4 x 16

Baldor Motor Information

Hp/kw	Volt	Phase	FLA
1½ Hp (1.1 kw)	115 / 208-230	1	18/9.5-9
1½ Hp (1.1 kw)	208-230/460/575	3	5-4.8/2.4/1.9

Hp/kw	Volt	Phase	FLA
1 Hp (0.75 kw)	115 / 208-230	1	13.4/7.4-6.7
1 Hp (0.75 kw)	208-230/460/575	3	3.4/1.7/1.4

WILO USA LLC
1290 N 25th Ave
Melrose Park, IL 60160
Tel: (866) 945-6872
Fax: (708) 338-9455

www.WILO-USA.com

WILO Canada Inc.
Bay 7-2915 10th Ave. NE
Calgary, Alberta T2A 5L4
Tel: (866) 945-6236
Fax: (403) 277-9456

www.WILO-CANADA.com



WILO IL Submittal

IL 1.5-45/110-4 & IL 1.5-35/100-4



Pumpen Intelligenz.

Project:	
Engineer:	
Contractor:	
Submitted By:	Date:
Approved By:	Date:

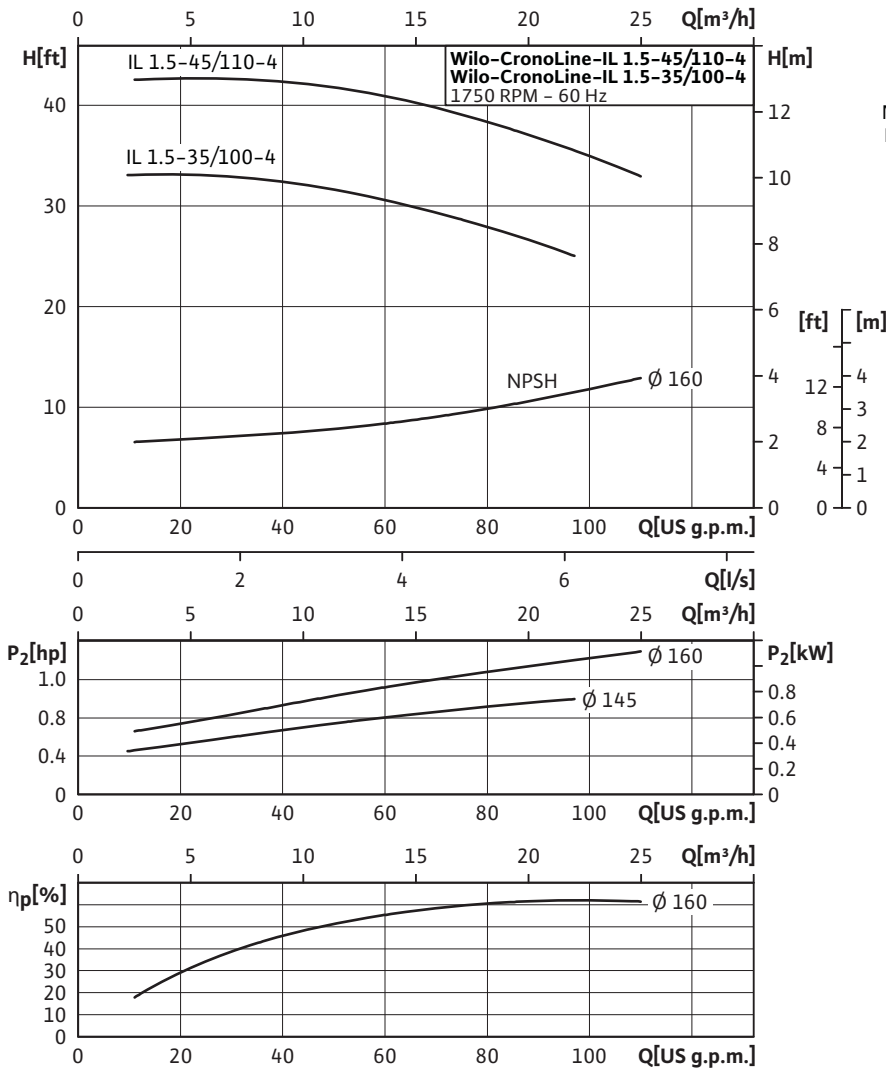
Tag #	Model #	Flow	Head	Hp	Volt/Phase	Motor Enclosure	RPM
	IL 1.5-45/110-4			1½			1750 (4 pole)
	IL 1.5-35/100-4			1			1750 (4 pole)

Applications

- Max Temp: 20°F to 250°F (-4°C to 120°C)
- 285°F (140°C) optional seal
- Max Ambient Temp: 104°F (40°C)
- Max Working Press: 175 PSI (12 Bar)
- 250 PSI (17 Bar) on request
- Fluids: Water or Water/Glycol up to 50%
- Other Fluids - Contact WILO

Materials of Construction

- Impeller: Cast Bronze
- Cast Iron (optional)
- Shaft: 316L Stainless Steel
- Volute: Cast Iron (Cataphoresis Coated)
- Seal (Std): Silicon Carbide on Silicon Carbide
- HNBR Elastomer
- CrNiMo Spring



Approval Stamp Here

WILO USA LLC
 1290 N 25th Ave
 Melrose Park, IL 60160
 Tel: (866) 945-6872
 Fax: (708) 338-9455 www.WILO-USA.com

WILO Canada Inc.
 Bay 7-2915 10th Ave. NE
 Calgary, Alberta T2A 5L4
 Tel: (866) 945-6236
 Fax: (403) 277-9456 www.WILO-CANADA.com



WILO IL Submittal

IL 1.5-45/110-4 & IL 1.5-35/100-4



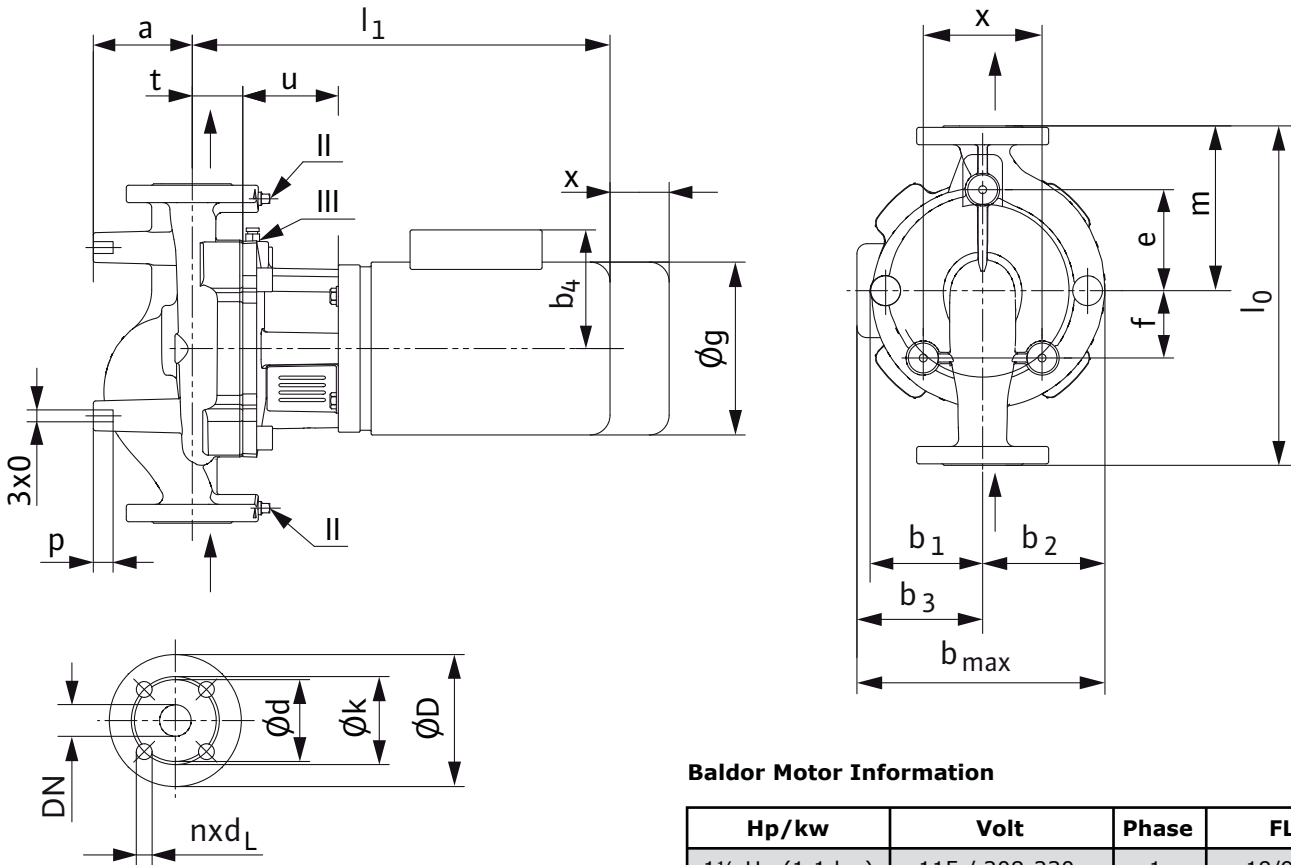
Pumpen Intelligenz.

Pump Dimensions for: IL 1.5-45/110-4

	l_0	a	b_1	b_2	$b_{3\ 1\sim}$	$b_{3\ 3\sim}$	$b_{max\ 1\sim}$	$b_{max\ 3\sim}$	c	e	f	$g_{1\sim}$	$g_{3\sim}$	$l_{1\ 1\sim}$	$l_{1\ 3\sim}$	m	o	p	x	Wt max
Inch	14½	3¼	4½	5	5⅝	5⅝	10¾	10¾	5⅞	5⅞	2¼	7⅞	7⅞	18¾	17¾	7	¾	¾	3¾	106 lbs.
mm	368	82	114	129	142	142	272	272	130	149	58	183	183	468	442	178	10	20	95	48 kg.

Pump Dimensions for: IL 1.5-35/100-4

	l_0	a	b_1	b_2	$b_{3\ 1\sim}$	$b_{3\ 3\sim}$	$b_{max\ 1\sim}$	$b_{max\ 3\sim}$	c	e	f	$g_{1\sim}$	$g_{3\sim}$	$l_{1\ 1\sim}$	$l_{1\ 3\sim}$	m	o	p	x	Wt max
Inch	14½	3¼	4½	5	5⅝	5	10¾	10⅞	5⅞	5⅞	2¼	7⅞	6⅞	17¾	17½	7	¾	¾	3¾	100 lbs.
mm	368	82	114	129	142	128	272	258	130	149	58	183	157	442	445	178	10	20	95	45 kg.



Flange Dimensions: 1.25" 125 ANSI (250 # optional)

Details	Flange	D	d	k (BCD)	n x d _L
Inch	1½	6	3½	3⅞	4 x ⅝
mm	40	155	90	99	4 x 16

Baldor Motor Information

Hp/kw	Volt	Phase	FLA
1½ Hp (1.1 kw)	115 / 208-230	1	18/9.5-9
1½ Hp (1.1 kw)	208-230/460/575	3	5-4.8/2.4/1.9

Hp/kw	Volt	Phase	FLA
1 Hp (0.75 kw)	115 / 208-230	1	13.4/7.4-6.7
1 Hp (0.75 kw)	208-230/460/575	3	3.4/1.7/1.4

WILO USA LLC
1290 N 25th Ave
Melrose Park, IL 60160
Tel: (866) 945-6872
Fax: (708) 338-9455

www.WILO-USA.com

WILO Canada Inc.
Bay 7-2915 10th Ave. NE
Calgary, Alberta T2A 5L4
Tel: (866) 945-6236
Fax: (403) 277-9456

www.WILO-CANADA.com



WILO IL Submittal

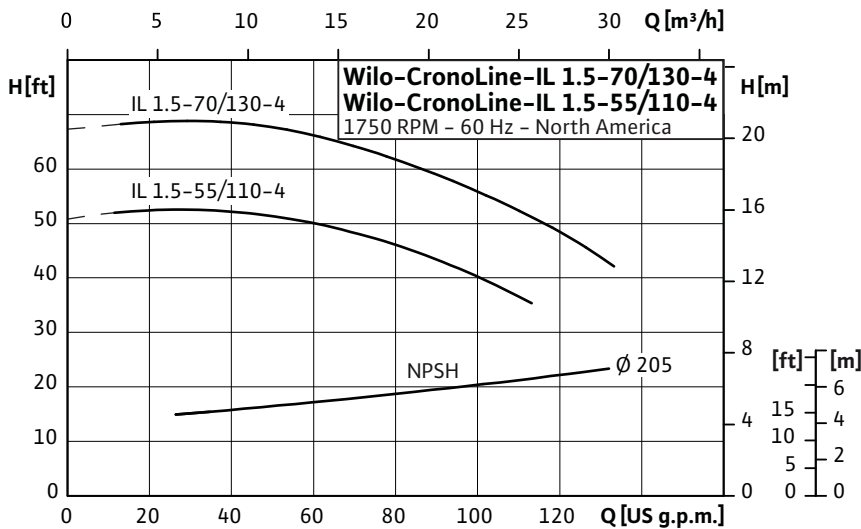
IL 1.5-70/130-4 & IL 1.5-55/110-4



Pumpen Intelligenz.

Project:	
Engineer:	
Contractor:	
Submitted By:	Date:
Approved By:	Date:

Tag #	Model #	Flow	Head	Hp	Volt/Phase	Motor Enclosure	RPM
	IL 1.5-70/130-4			3			1750 (4 pole)
	IL 1.5-55/110-4			2			1750 (4 pole)

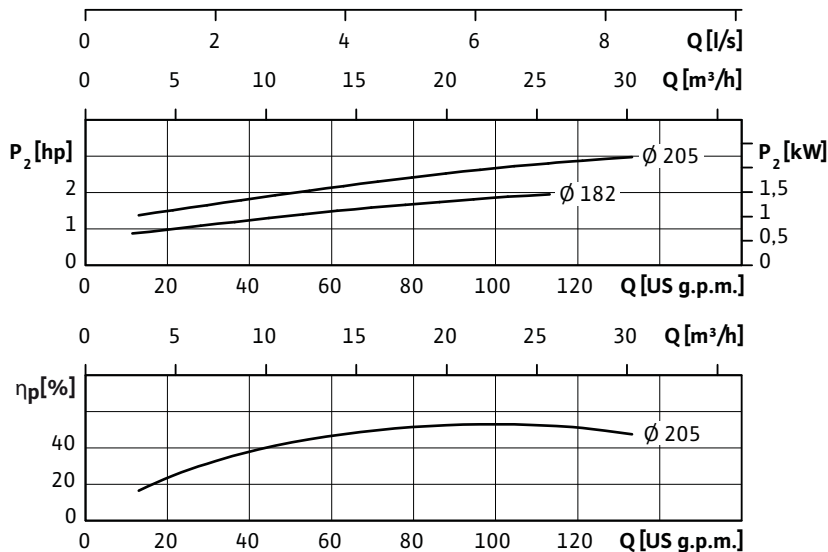


Applications

- Max Temp: 20°F to 250°F (-4°C to 120°C)
- 285°F (140°C) optional seal
- Max Ambient Temp: 104°F (40°C)
- Max Working Press: 175 PSI (12 Bar)
- 250 PSI (17 Bar) on request
- Fluids: Water or Water/Glycol up to 50%
- Other Fluids - Contact WILO

Materials of Construction

- Impeller: Cast Bronze
- Cast Iron (optional)
- Shaft: 316L Stainless Steel
- Volute: Cast Iron (Cataphoresis Coated)
- Seal (Std): Silicon Carbide on Silicon Carbide
- HNBR Elastomer
- CrNiMo Spring



Approval Stamp Here

WILO USA LLC
 1290 N 25th Ave
 Melrose Park, IL 60160
 Tel: (866) 945-6872
 Fax: (708) 338-9455

www.WILO-USA.com

WILO Canada Inc.
 Bay 7-2915 10th Ave. NE
 Calgary, Alberta T2A 5L4
 Tel: (866) 945-6236
 Fax: (403) 277-9456

www.WILO-CANADA.com



WILO IL Submittal

IL 1.5-70/130-4 & IL 1.5-55/110-4



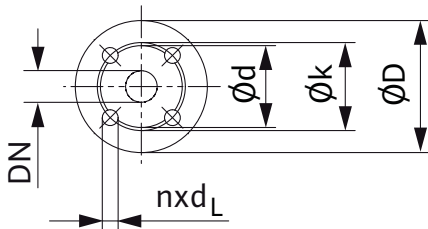
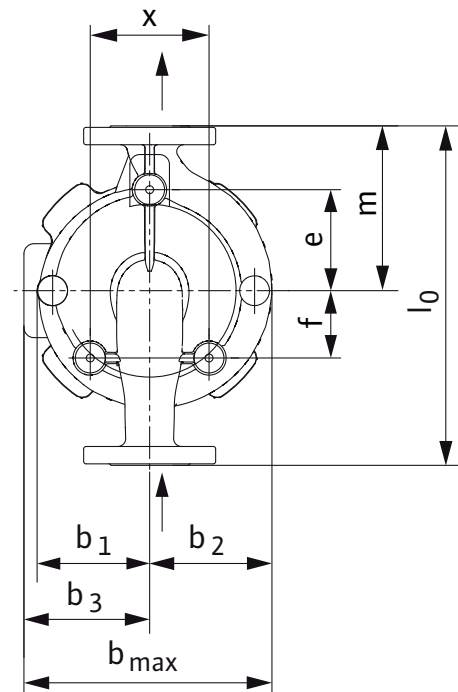
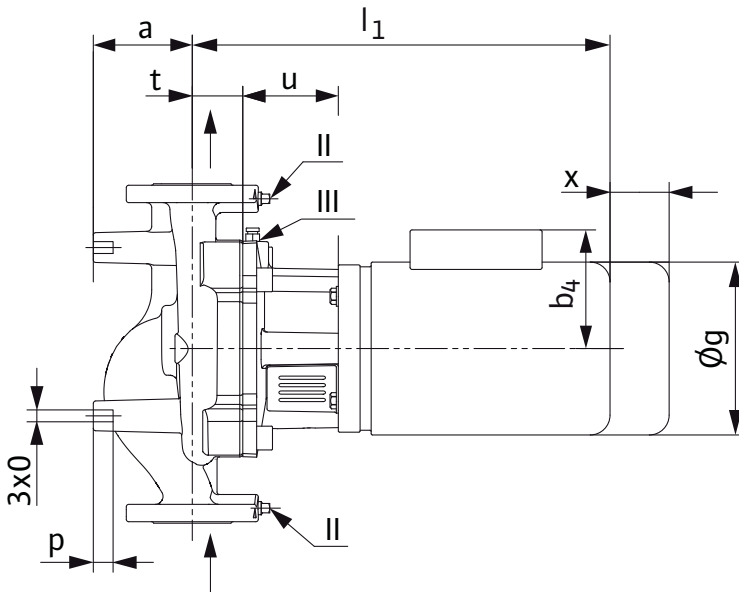
Pumpen Intelligenz.

Pump Dimensions for: IL 1.5-70/130-4

	l_0	a	b_1	b_2	b_3 1~	b_3 3~	b_{max} 1~	b_{max} 3~	c	e	f	g 1~	g 3~	l_1 1~	l_1 3~	m	o	p	x	Wt max
Inch	17	4 ³ / ₈	5 ³ / ₄	5 ⁷ / ₈	-	5 ⁵ / ₈	-	11 ¹ / ₂	7 ¹ / ₈	5 ³ / ₈	3 ¹ / ₈	-	7 ¹ / ₄	-	19 ¹ / ₈	8	3 ³ / ₈	7 ⁷ / ₈	4	141 lbs.
mm	432	110	145	149	-	143	-	292	180	137	78	-	182	-	485	203	10	20	102	64 kg.

Pump Dimensions for: IL 1.5-55/110-4

	l_0	a	b_1	b_2	b_3 1~	b_3 3~	b_{max} 1~	b_{max} 3~	c	e	f	g 1~	g 3~	l_1 1~	l_1 3~	m	o	p	x	Wt max
Inch	17	4 ³ / ₈	5 ³ / ₄	5 ⁷ / ₈	5 ⁵ / ₈	5 ⁵ / ₈	11 ¹ / ₂	11 ¹ / ₂	7 ¹ / ₈	5 ³ / ₈	3 ¹ / ₈	7 ¹ / ₈	7 ¹ / ₄	19 ¹ / ₈	19 ¹ / ₈	8	3 ³ / ₈	7 ⁷ / ₈	4	137 lbs.
mm	432	110	145	149	143	143	292	292	180	137	58	182	182	485	485	203	10	20	102	62 kg.



Flange Dimensions: 1.5" 125 ANSI (250 # optional)

Details	Flange	D	d	k (BCD)	n x d _L
Inch	1 ¹ / ₂	6	3 ¹ / ₂	3 ⁷ / ₈	4 x 5 ⁸ / ₁₆
mm	40	155	90	99	4 x 16

Baldor Motor Information

Hp/kw	Volt	Phase	FLA
3 Hp (2.25 kw)	On Request	1	On Request
3 Hp (2.25 kw)	208-230/460/575	3	8.5-8.2/4.1/3.4

Hp/kw	Volt	Phase	FLA
2 Hp (1.5 kw)	115 / 208-230	1	23/11.5
2 Hp (1.5 kw)	208-230/460/575	3	6.5-6.2/3.1/2.5

WILO USA LLC
1290 N 25th Ave
Melrose Park, IL 60160
Tel: (866) 945-6872
Fax: (708) 338-9455

www.WILO-USA.com

WILO Canada Inc.
Bay 7-2915 10th Ave. NE
Calgary, Alberta T2A 5L4
Tel: (866) 945-6236
Fax: (403) 277-9456

www.WILO-CANADA.com



WILO IL Submittal

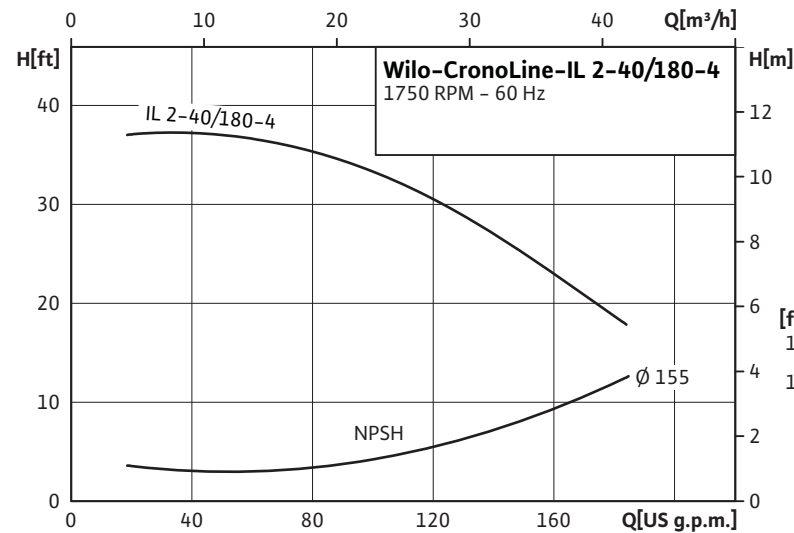
IL 2-40/180-4



Pumpen Intelligenz.

Project:	
Engineer:	
Contractor:	
Submitted By:	Date:
Approved By:	Date:

Tag #	Model #	Flow	Head	Hp	Volt/Phase	Motor Enclosure	RPM
	IL 2-40/180-4			1½			1750 (4 pole)

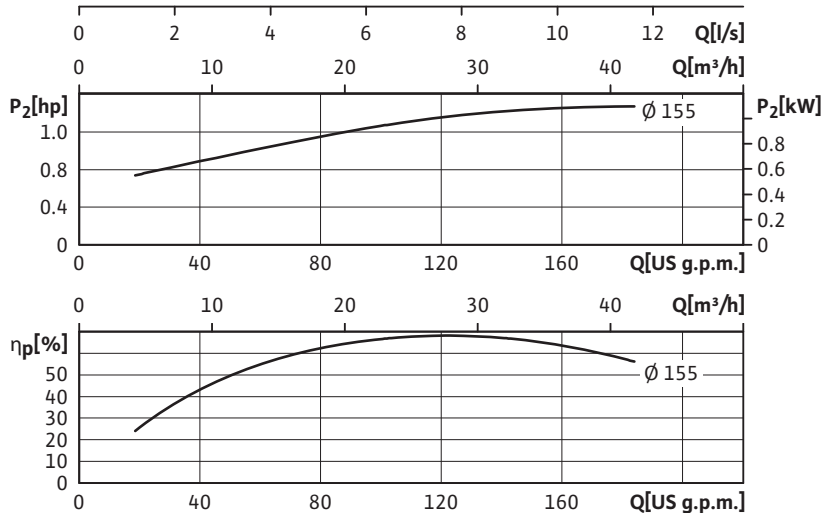


Applications

- Max Temp: 20°F to 250°F (-4°C to 120°C)
- 285°F (140°C) optional seal
- Max Ambient Temp: 104°F (40°C)
- Max Working Press: 175 PSI (12 Bar)
- 250 PSI (17 Bar) on request
- Fluids: Water or Water/Glycol up to 50%
- Other Fluids - Contact WILO

Materials of Construction

- Impeller: Cast Bronze
- Cast Iron (optional)
- Shaft: 316L Stainless Steel
- Volute: Cast Iron (Cataphoresis Coated)
- Seal (Std): Silicon Carbide on Silicon Carbide
- HNBR Elastomer
- CrNiMo Spring



WILO USA LLC
 1290 N 25th Ave
 Melrose Park, IL 60160
 Tel: (866) 945-6872
 Fax: (708) 338-9455

www.WILO-USA.com

WILO Canada Inc.
 Bay 7-2915 10th Ave. NE
 Calgary, Alberta T2A 5L4
 Tel: (866) 945-6236
 Fax: (403) 277-9456

www.WILO-CANADA.com



WILO IL Submittal

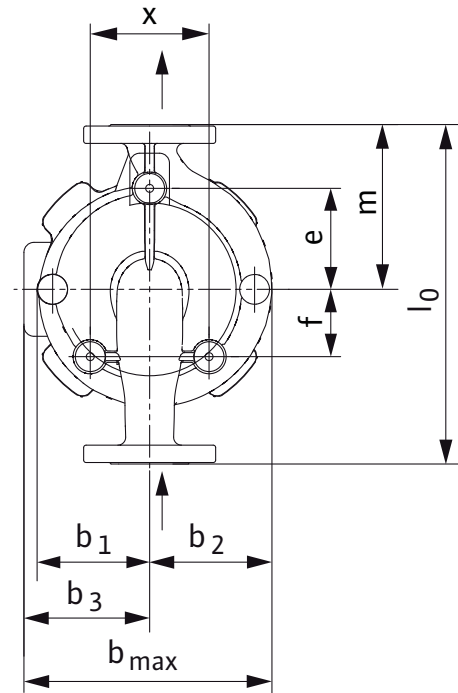
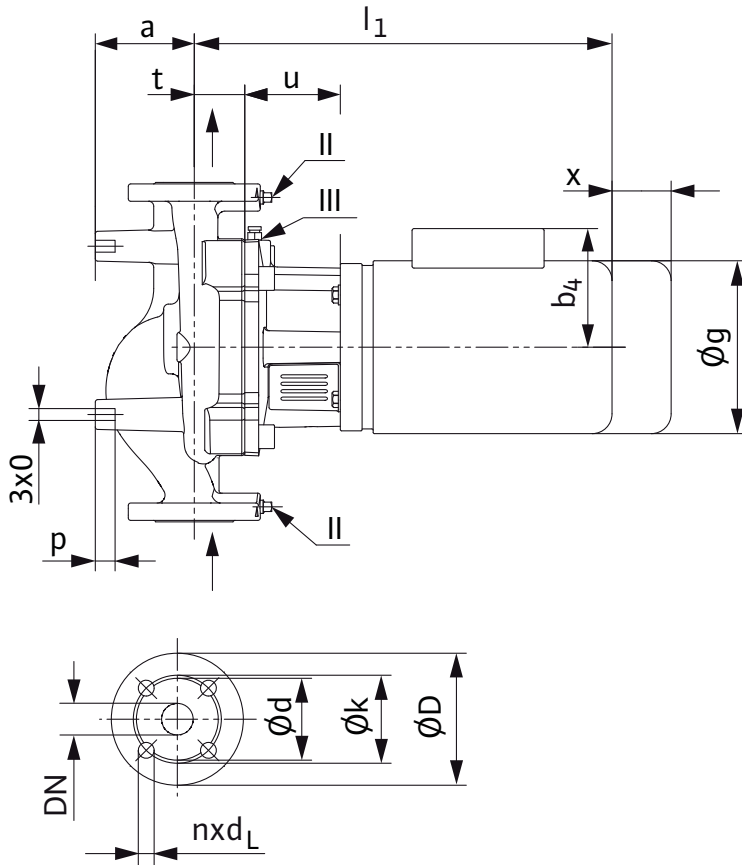
IL 2-40/180-4



Pumpen Intelligenz.

Pump Dimensions for: IL 2-40/180-4

	l_0	a	b_1	b_2	b_3 1~	b_3 3~	b_{max} 1~	b_{max} 3~	c	e	f	g 1~	g 3~	l_1 1~	l_1 3~	m	o	p	x	Wt max
Inch	15	3 ⁵ / ₈	4 ³ / ₄	5 ¹ / ₂	5 ¹ / ₈	5 ¹ / ₈	10 ⁵ / ₈	10 ⁵ / ₈	6 ¹ / ₂	4 ⁵ / ₈	1 ⁷ / ₈	7 ¹ / ₄	7 ¹ / ₄	18 ⁵ / ₈	18 ⁵ / ₈	7 ³ / ₈	3 ³ / ₈	7 ⁷ / ₈	4	115 lbs.
mm	381	90	120	139	129	129	268	268	164	117	48	183	183	472	472	186	10	20	102	52 kg.



Flange Dimensions: 2" 125 ANSI (250 # optional)

Details	Flange	D	d	k (BCD)	n x d _L
Inch	2	6 ¹ / ₂	4 ¹ / ₄	4 ³ / ₄	4 x 3 ³ / ₄
mm	50	165	106	121	4 x 19

Baldor Motor Information

Hp/kw	Volt	Phase	FLA
1.5 Hp (1.1 kw)	115 / 208-230	1	18/8
1.5 Hp (1.1 kw)	208-230/460/575	3	4.5-4.2/2.1/1.7

WILO USA LLC
1290 N 25th Ave
Melrose Park, IL 60160
Tel: (866) 945-6872
Fax: (708) 338-9455

www.WILO-USA.com

WILO Canada Inc.
Bay 7-2915 10th Ave. NE
Calgary, Alberta T2A 5L4
Tel: (866) 945-6236
Fax: (403) 277-9456

www.WILO-CANADA.com



WILO IL Submittal

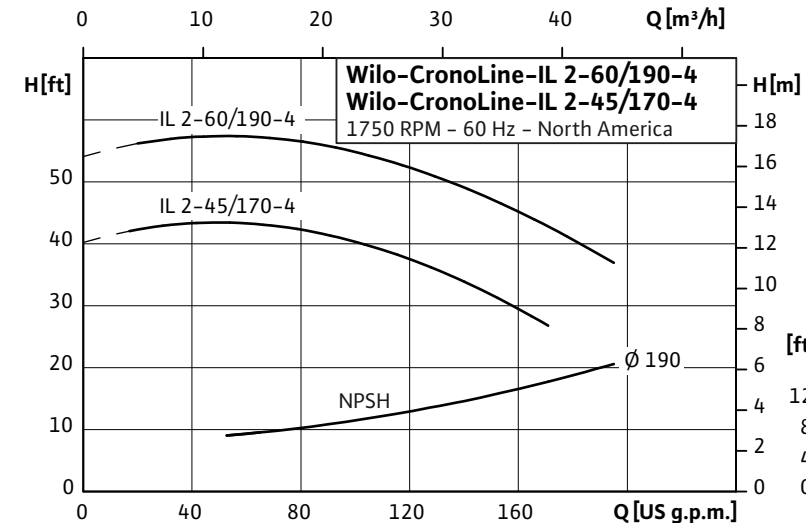
IL 2-60/190-4 & IL 2-45/170-4



Pumpen Intelligenz.

Project:	
Engineer:	
Contractor:	
Submitted By:	Date:
Approved By:	Date:

Tag #	Model #	Flow	Head	Hp	Volt/Phase	Motor Enclosure	RPM
	IL 2-60/190-4			3			1750 (4 pole)
	IL 2-45/170-4			2			1750 (4 pole)

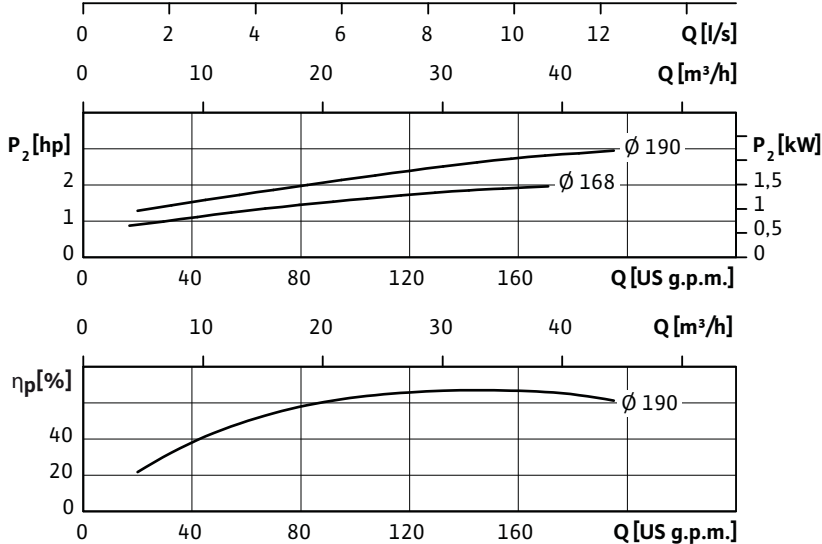


Applications

- Max Temp: 20°F to 250°F (-4°C to 120°C)
- 285°F (140°C) optional seal
- Max Ambient Temp: 104°F (40°C)
- Max Working Press: 175 PSI (12 Bar)
- 250 PSI (17 Bar) on request
- Fluids: Water or Water/Glycol up to 50%
- Other Fluids - Contact WILO

Materials of Construction

- Impeller: Cast Bronze
- Cast Iron (optional)
- Shaft: 316L Stainless Steel
- Volute: Cast Iron (Cataphoresis Coated)
- Seal (Std): Silicon Carbide on Silicon Carbide
- HNBR Elastomer
- CrNiMo Spring



Approval Stamp Here

WILO USA LLC
 1290 N 25th Ave
 Melrose Park, IL 60160
 Tel: (866) 945-6872
 Fax: (708) 338-9455 www.WILO-USA.com

WILO Canada Inc.
 Bay 7-2915 10th Ave. NE
 Calgary, Alberta T2A 5L4
 Tel: (866) 945-6236
 Fax: (403) 277-9456
 www.WILO-CANADA.com



WILO IL Submittal

IL 2-60/190-4 & IL 2-45/170-4



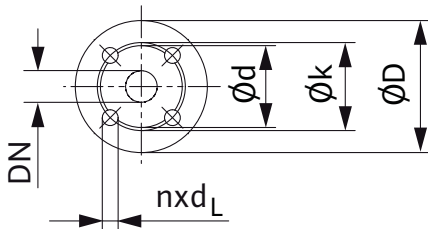
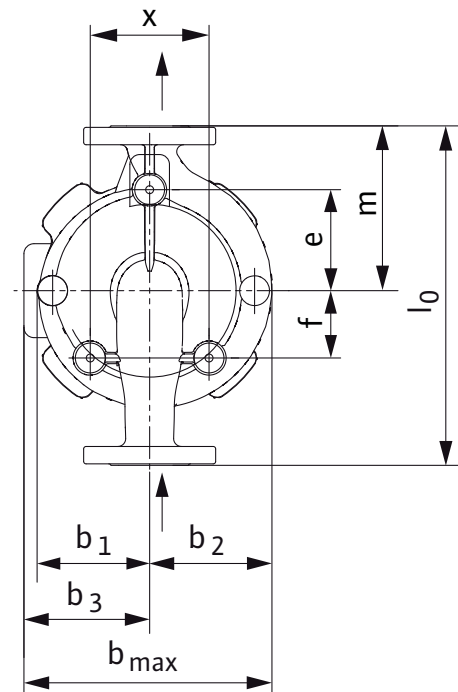
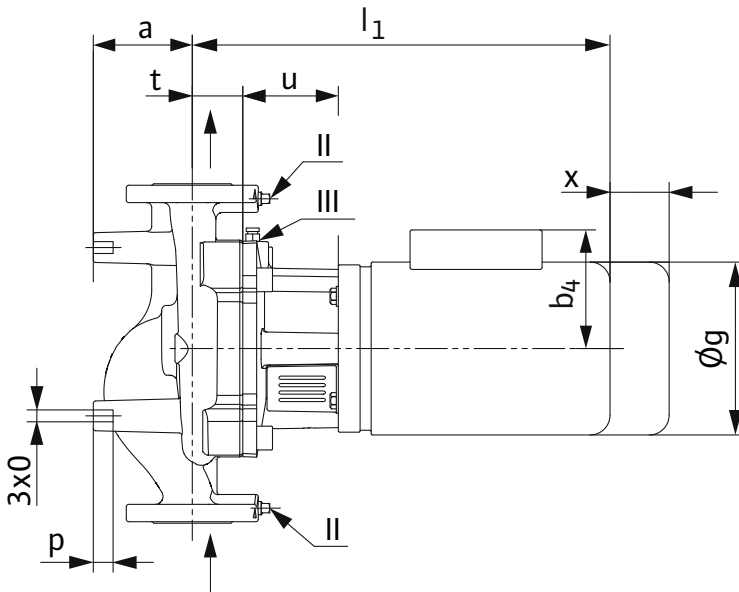
Pumpen Intelligenz.

Pump Dimensions for: IL 2-60/190-4

	l_0	a	b_1	b_2	b_3 1~	b_3 3~	b_{max} 1~	b_{max} 3~	c	e	f	g 1~	g 3~	l_1 1~	l_1 3~	m	o	p	x	Wt max
Inch	17½	4¾	5¾	5⅞	-	5⅞	-	11½	6¾	5¼	2¾	-	7¼	-	19⅞	8	¾	⅞	4	148 lbs.
mm	444	120	145	150	-	143	-	293	160	132	70	-	182	-	486	202	10	20	102	67 kg.

Pump Dimensions for: IL 2-45/170-4

	l_0	a	b_1	b_2	b_3 1~	b_3 3~	b_{max} 1~	b_{max} 3~	c	e	f	g 1~	g 3~	l_1 1~	l_1 3~	m	o	p	x	Wt max
Inch	17½	4¾	5¾	5⅞	5⅞	5⅞	11½	11½	6¾	5¼	2¾	7¼	7¼	19⅞	19⅞	8	¾	⅞	4	143 lbs.
mm	444	120	145	150	143	143	268	268	160	132	70	182	182	486	486	202	10	20	102	65 kg.



Flange Dimensions: 2" 125 ANSI (250 # optional)

Details	Flange	D	d	k (BCD)	n x d _L
Inch	2	6½	4¼	4¾	4 x ¾
mm	50	165	106	121	4 x 19

Baldor Motor Information

Hp/kw	Volt	Phase	FLA
3 Hp (2.25 kw)	On Request	1	On Request
3 Hp (2.25 kw)	208-230/460/575	3	8.5-8.2/4.1/3.4

Hp/kw	Volt	Phase	FLA
2 Hp (1.5 kw)	115 / 208-230	1	23/11.5
2 Hp (1.5 kw)	208-230/460/575	3	6.5-6.2/3.1/2.5

WILO USA LLC
1290 N 25th Ave
Melrose Park, IL 60160
Tel: (866) 945-6872
Fax: (708) 338-9455

www.WILO-USA.com

WILO Canada Inc.
Bay 7-2915 10th Ave. NE
Calgary, Alberta T2A 5L4
Tel: (866) 945-6236
Fax: (403) 277-9456

www.WILO-CANADA.com



WILO IL Submittal

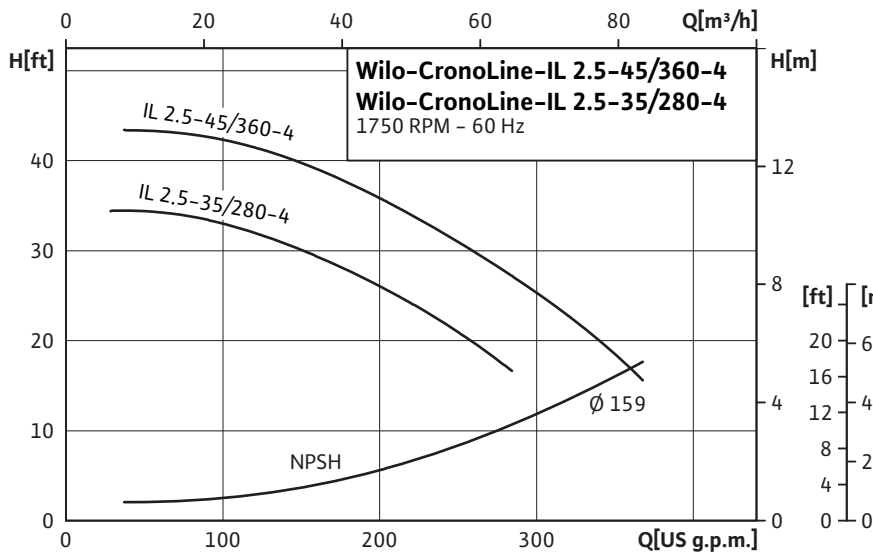
IL 2.5-45/360-4 & IL 2.5-35/280-4



Pumpen Intelligenz.

Project:	
Engineer:	
Contractor:	
Submitted By:	Date:
Approved By:	Date:

Tag #	Model #	Flow	Head	Hp	Volt/Phase	Motor Enclosure	RPM
	IL 2.5-45/360-4			3			1750 (4 pole)
	IL 2.5-35/280-4			2			1750 (4 pole)

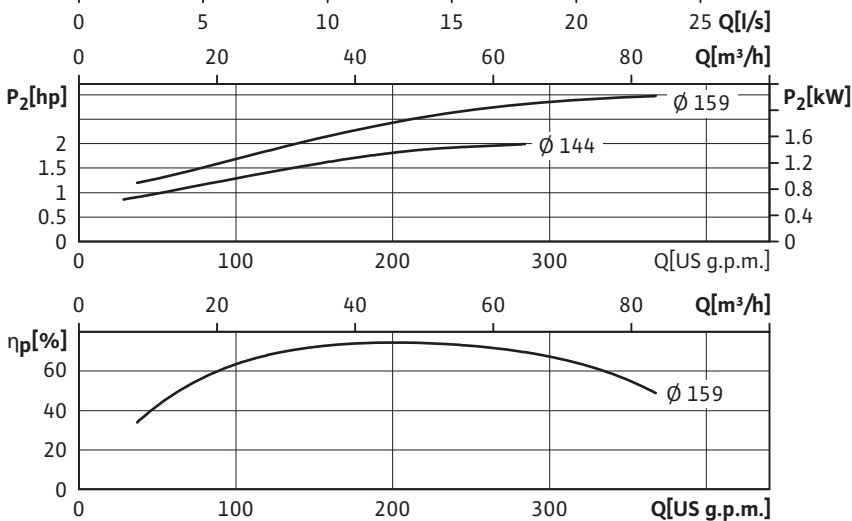


Applications

- Max Temp: 20°F to 250°F (-4°C to 120°C)
- 285°F (140°C) optional seal
- Max Ambient Temp: 104°F (40°C)
- Max Working Press: 175 PSI (12 Bar)
- 250 PSI (17 Bar) on request
- Fluids: Water or Water/Glycol up to 50%
- Other Fluids - Contact WILO

Materials of Construction

- Impeller: Cast Bronze
- Cast Iron (optional)
- Shaft: 316L Stainless Steel
- Volute: Cast Iron (Cataphoresis Coated)
- Seal (Std): Silicon Carbide on Silicon Carbide
- HNBR Elastomer
- CrNiMo Spring



Approval Stamp Here

WILO USA LLC
 1290 N 25th Ave
 Melrose Park, IL 60160
 Tel: (866) 945-6872
 Fax: (708) 338-9455
www.WILO-USA.com

WILO Canada Inc.
 Bay 7-2915 10th Ave. NE
 Calgary, Alberta T2A 5L4
 Tel: (866) 945-6236
 Fax: (403) 277-9456
www.WILO-CANADA.com



WILO IL Submittal

IL 2.5-45/360-4 & IL 2.5-35/280-4



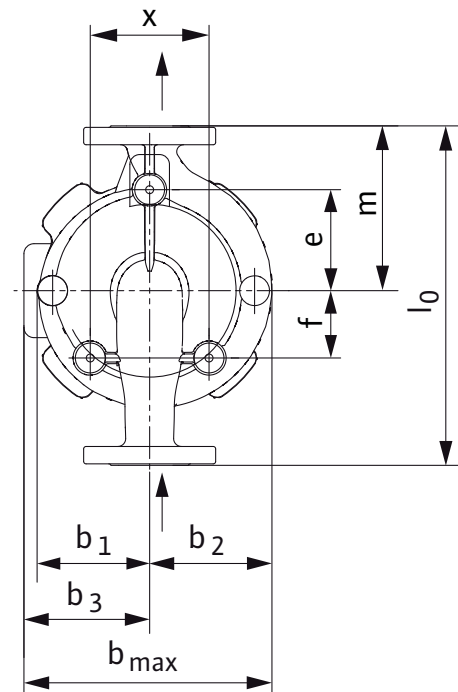
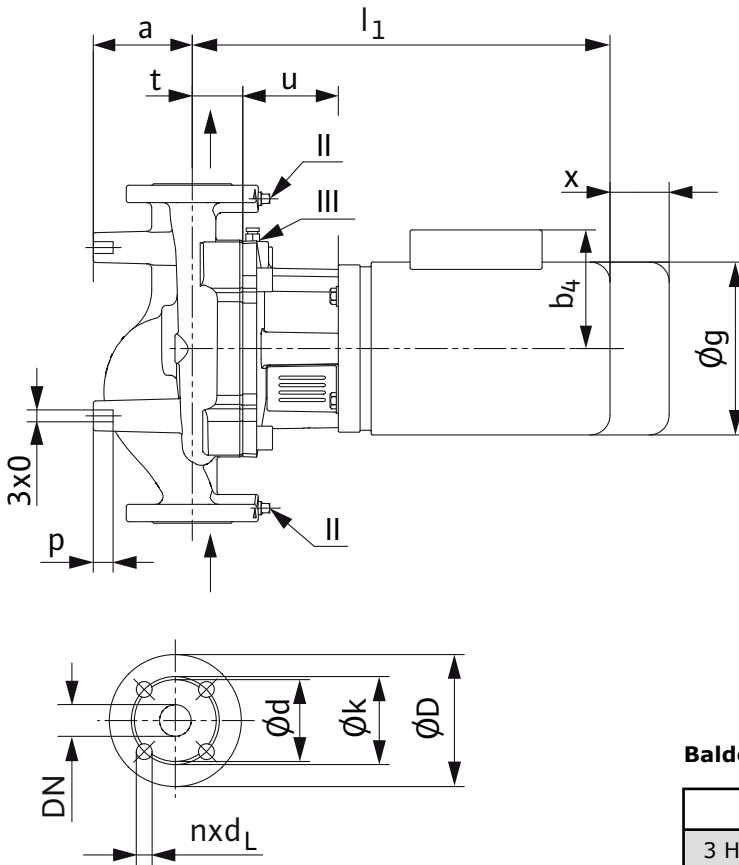
Pumpen Intelligenz.

Pump Dimensions for: IL 2.5-45/360-4

	l_0	a	b_1	b_2	$b_{3\ 1\sim}$	$b_{3\ 3\sim}$	$b_{max\ 1\sim}$	$b_{max\ 3\sim}$	c	e	f	$g_{1\sim}$	$g_{3\sim}$	$l_{1\ 1\sim}$	$l_{1\ 3\sim}$	m	o	p	x	Wt max
Inch	17½	4¾	5	5⅞	-	5⅞	-	11⅜	7⅞	5½	2⅜	-	7¼	-	19¾	8½	½	⅞	5	143 lbs.
mm	445	110	127	147	-	143	-	290	180	140	60	-	182	-	500	216	13	20	127	65 kg.

Pump Dimensions for: IL 2.5-35/280-4

	l_0	a	b_1	b_2	$b_{3\ 1\sim}$	$b_{3\ 3\sim}$	$b_{max\ 1\sim}$	$b_{max\ 3\sim}$	c	e	f	$g_{1\sim}$	$g_{3\sim}$	$l_{1\ 1\sim}$	$l_{1\ 3\sim}$	m	o	p	x	Wt max
Inch	17½	4¾	5	5⅞	5⅞	5⅞	11⅜	11⅜	7⅞	5½	2⅜	7¼	7¼	19¾	19¾	8½	½	⅞	5	147 lbs.
mm	445	110	127	147	143	143	290	290	180	140	60	182	182	500	500	216	13	20	127	62 kg.



Flange Dimensions: 2.5" 125 ANSI (250 # optional)

Details	Flange	D	d	k (BCD)	n x d _L
Inch	2½	4⅞	5	5½	4 x ¾
mm	65	110	126	140	4 x 19

Baldor Motor Information

Hp/kw	Volt	Phase	FLA
3 Hp (2.25 kw)	On Request	1	On Request
3 Hp (2.25 kw)	208-230/460/575	3	8.5-8.2/4.1/3.4

Hp/kw	Volt	Phase	FLA
2 Hp (1.5 kw)	115 / 208-230	1	23/11.5
2 Hp (1.5 kw)	208-230/460/575	3	6.5-6.2/3.1/2.5

WILO USA LLC
1290 N 25th Ave
Melrose Park, IL 60160
Tel: (866) 945-6872
Fax: (708) 338-9455

www.WILO-USA.com

WILO Canada Inc.
Bay 7-2915 10th Ave. NE
Calgary, Alberta T2A 5L4
Tel: (866) 945-6236
Fax: (403) 277-9456

www.WILO-CANADA.com



WILO IL Submittal

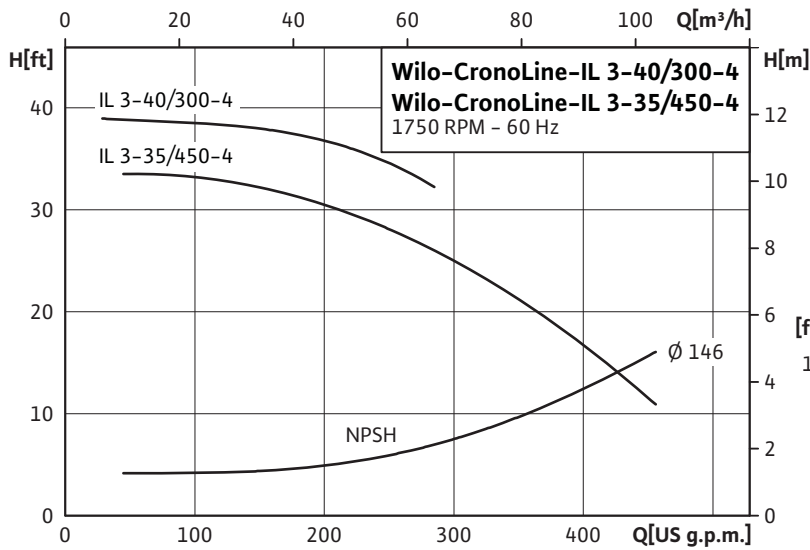
IL 3-40/300-4 & IL 3-35/450-4



Pumpen Intelligenz.

Project:	
Engineer:	
Contractor:	
Submitted By:	Date:
Approved By:	Date:

Tag #	Model #	Flow	Head	Hp	Volt/Phase	Motor Enclosure	RPM
	IL 3-40/300-4			3			1750 (4 pole)
	IL 3-35/450-4			3			1750 (4 pole)

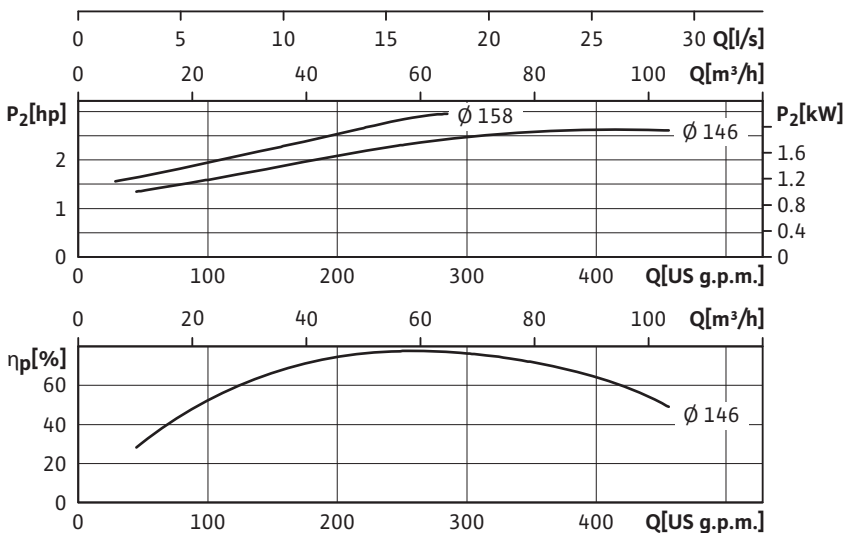


Applications

- Max Temp: 20°F to 250°F (-4°C to 120°C)
- 285°F (140°C) optional seal
- Max Ambient Temp: 104°F (40°C)
- Max Working Press: 175 PSI (12 Bar)
- 250 PSI (17 Bar) on request
- Fluids: Water or Water/Glycol up to 50%
- Other Fluids - Contact WILO

Materials of Construction

- Impeller: Cast Bronze
- Cast Iron (optional)
- Shaft: 316L Stainless Steel
- Volute: Cast Iron (Cataphoresis Coated)
- Seal (Std): Silicon Carbide on Silicon Carbide
- HNBR Elastomer
- CrNiMo Spring



WILO USA LLC
 1290 N 25th Ave
 Melrose Park, IL 60160
 Tel: (866) 945-6872
 Fax: (708) 338-9455

www.WILO-USA.com

WILO Canada Inc.
 Bay 7-2915 10th Ave. NE
 Calgary, Alberta T2A 5L4
 Tel: (866) 945-6236
 Fax: (403) 277-9456

www.WILO-CANADA.com



WILO IL Submittal

IL 3-40/300-4 & IL 3-35/450-4



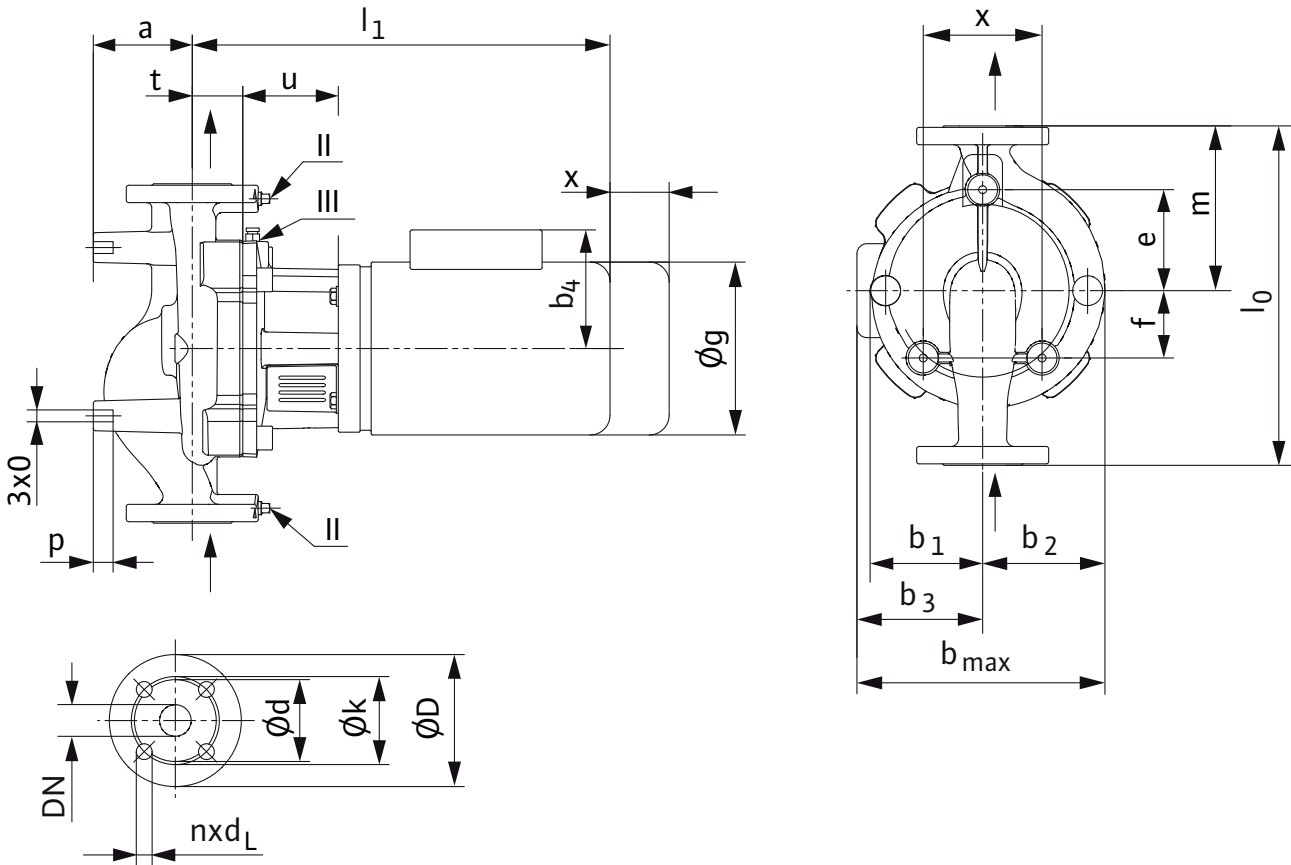
Pumpen Intelligenz.

Pump Dimensions for: IL 3-40/300-4

	l_0	a	b_1	b_2	b_3 1~	b_3 3~	b_{max} 1~	b_{max} 3~	c	e	f	g 1~	g 3~	l_1 1~	l_1 3~	m	o	p	x	Wt max
Inch	19	4 ⁷ / ₈	5 ³ / ₈	6 ³ / ₈	-	5 ³ / ₈	-	12	7 ¹ / ₈	5 ¹ / ₈	2 ⁷ / ₈	-	7 ¹ / ₄	-	20	8 ⁵ / ₈	1/2	7/8	5	165 lbs.
mm	445	110	127	147	-	143	-	290	180	140	60	-	182	-	500	216	13	20	127	65 kg.

Pump Dimensions for: IL 3-35/450-4

	l_0	a	b_1	b_2	b_3 1~	b_3 3~	b_{max} 1~	b_{max} 3~	c	e	f	g 1~	g 3~	l_1 1~	l_1 3~	m	o	p	x	Wt max
Inch	19	4 ⁷ / ₈	5 ³ / ₈	6 ³ / ₈	-	5 ³ / ₈	-	12	7 ¹ / ₈	5 ¹ / ₈	2 ⁷ / ₈	-	7 ¹ / ₄	-	20	8 ⁵ / ₈	1/2	7/8	5	165 lbs.
mm	445	110	127	147	-	143	-	290	180	140	60	-	182	-	500	216	13	20	127	62 kg.



Flange Dimensions: 3" 125 ANSI (250 # optional)

Details	Flange	D	d	k (BCD)	n x d _L
Inch	3	8 ¹ / ₄	5 ³ / ₄	6	4 x 3/4
mm	80	210	145	152	4 x 19

Baldor Motor Information

Hp/kw	Volt	Phase	FLA
3 Hp (2.25 kw)	On Request	1	On Request
3 Hp (2.25 kw)	208-230/460/575	3	8.5-8.2/4.1/3.4

WILO USA LLC
1290 N 25th Ave
Melrose Park, IL 60160
Tel: (866) 945-6872
Fax: (708) 338-9455

www.WILO-USA.com

WILO Canada Inc.
Bay 7-2915 10th Ave. NE
Calgary, Alberta T2A 5L4
Tel: (866) 945-6236
Fax: (403) 277-9456

www.WILO-CANADA.com



WILO IL Submittal

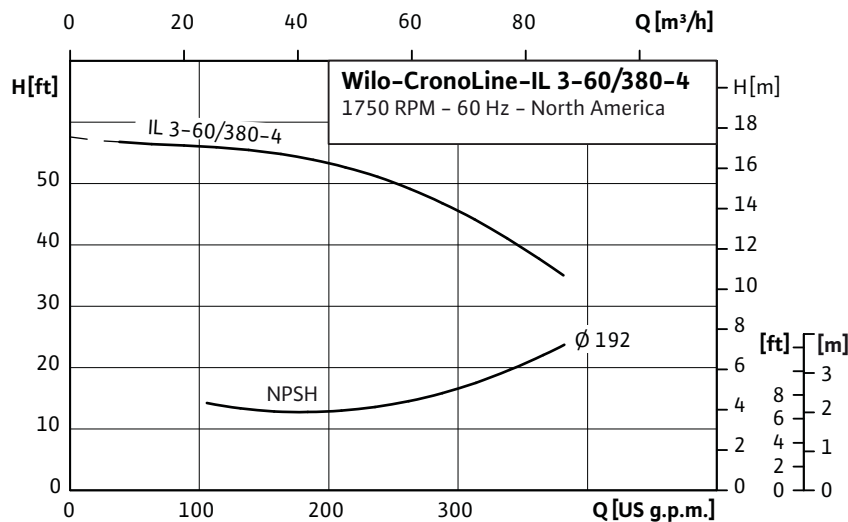
IL 3-60/380-4



Pumpen Intelligenz.

Project:	
Engineer:	
Contractor:	
Submitted By:	Date:
Approved By:	Date:

Tag #	Model #	Flow	Head	Hp	Volt/Phase	Motor Enclosure	RPM
	IL 3-60/380-4			5			1750 (4 pole)

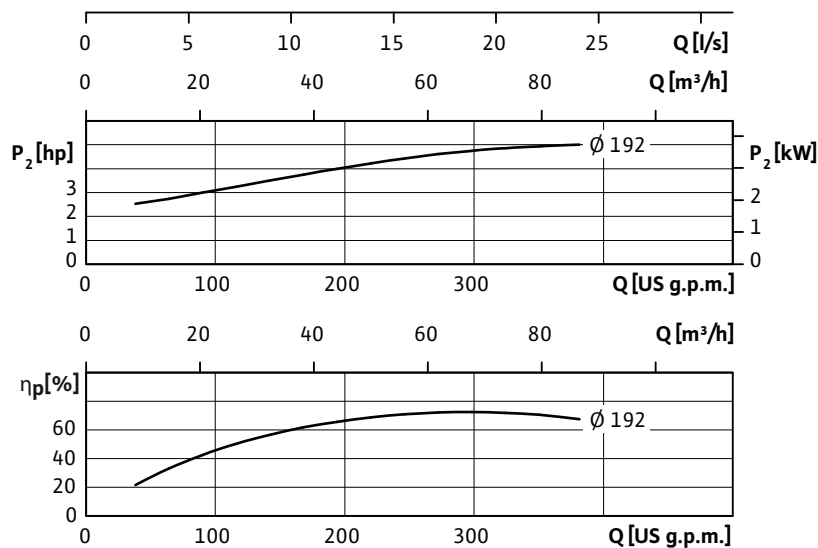


Applications

- Max Temp: 20°F to 250°F (-4°C to 120°C)
- 285°F (140°C) optional seal
- Max Ambient Temp: 104°F (40°C)
- Max Working Press: 175 PSI (12 Bar)
- 250 PSI (17 Bar) on request
- Fluids: Water or Water/Glycol up to 50%
- Other Fluids - Contact WILO

Materials of Construction

- Impeller: Cast Bronze
- Cast Iron (optional)
- Shaft: 316L Stainless Steel
- Volute: Cast Iron (Cataphoresis Coated)
- Seal (Std): Silicon Carbide on Silicon Carbide
- HNBR Elastomer
- CrNiMo Spring



Approval Stamp Here

WILO USA LLC
1290 N 25th Ave
Melrose Park, IL 60160
Tel: (866) 945-6872
Fax: (708) 338-9455
www.WILO-USA.com

WILO Canada Inc.
Bay 7-2915 10th Ave. NE
Calgary, Alberta T2A 5L4
Tel: (866) 945-6236
Fax: (403) 277-9456
www.WILO-CANADA.com



WILO IL Submittal

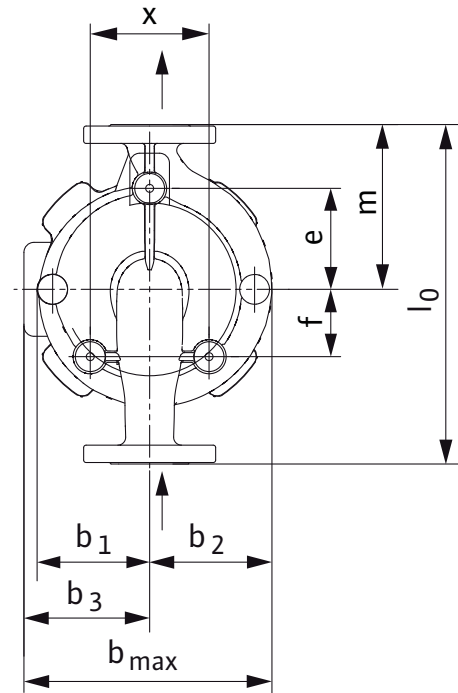
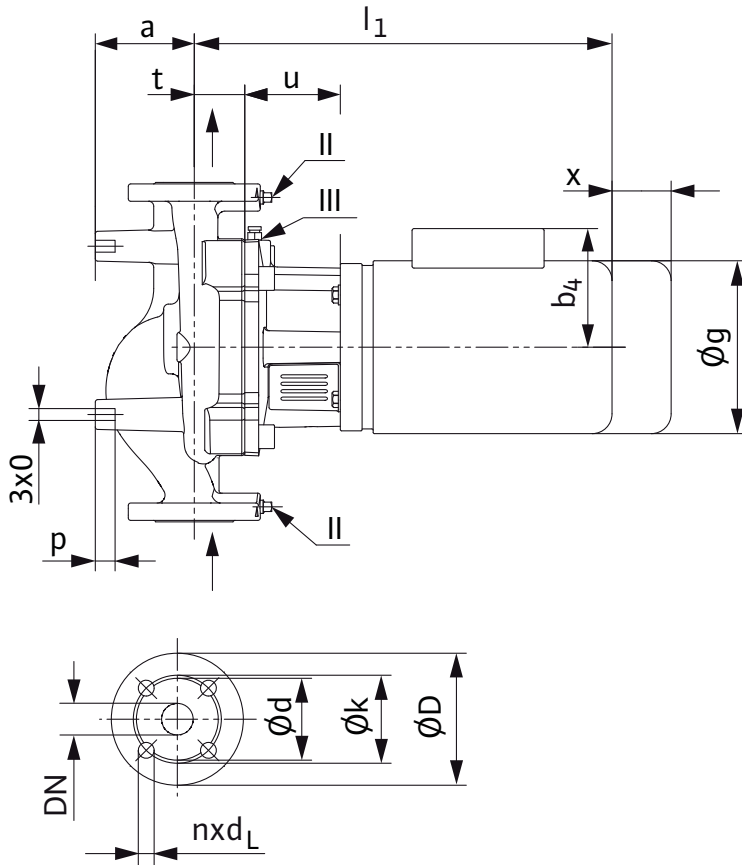
IL 3-60/380-4



Pumpen Intelligenz.

Pump Dimensions for: IL 3-60/380-4

	l_0	a	b_1	b_2	$b_{3\sim 1}$	$b_{3\sim 3}$	$b_{max\sim 1}$	$b_{max\sim 3}$	c	e	f	$g_{1\sim}$	$g_{3\sim}$	$l_{1\sim 1}$	$l_{1\sim 3}$	m	o	p	x	Wt max
Inch	21	5 $\frac{3}{4}$	6 $\frac{1}{4}$	7 $\frac{3}{4}$	-	6 $\frac{7}{8}$	-	4 $\frac{1}{8}$	8 $\frac{3}{4}$	6 $\frac{3}{4}$	2 $\frac{1}{2}$	-	8 $\frac{5}{8}$	-	23	9 $\frac{3}{4}$	$\frac{1}{2}$	$\frac{7}{8}$	5	216 lbs.
mm	533	145	157	182	-	175	-	357	220	170	62	-	218	-	585	246	13	20	127	98 kg.



Flange Dimensions: 3" 125 ANSI (250 # optional)

Details	Flange	D	d	k (BCD)	n x d _L
Inch	3	8 $\frac{1}{4}$	5 $\frac{3}{4}$	6	4 x $\frac{3}{4}$
mm	80	210	145	152	4 x 19

Baldor Motor Information

Hp/kw	Volt	Phase	FLA
5 Hp (3.75 kw)	208-230/460/575	3	15-13.2/6.6/5.2

WILO USA LLC
1290 N 25th Ave
Melrose Park, IL 60160
Tel: (866) 945-6872
Fax: (708) 338-9455

www.WILO-USA.com

WILO Canada Inc.
Bay 7-2915 10th Ave. NE
Calgary, Alberta T2A 5L4
Tel: (866) 945-6236
Fax: (403) 277-9456

www.WILO-CANADA.com



WILO IL Submittal

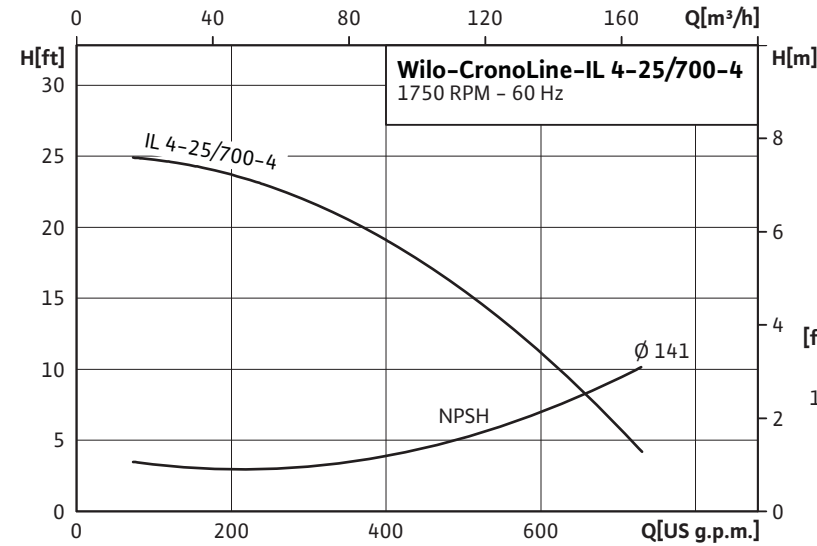
IL 4-25/700-4



Pumpen Intelligenz.

Project:	
Engineer:	
Contractor:	
Submitted By:	Date:
Approved By:	Date:

Tag #	Model #	Flow	Head	Hp	Volt/Phase	Motor Enclosure	RPM
	IL 4-25/700-4			3			1750 (4 pole)

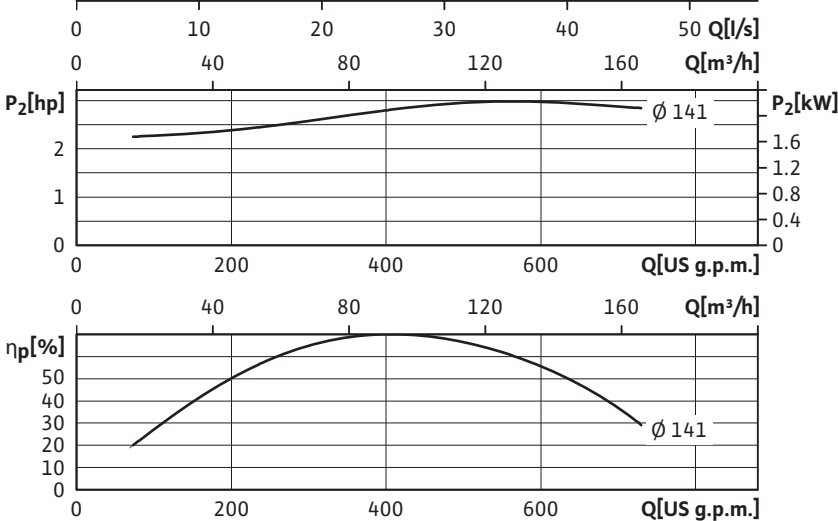


Applications

- Max Temp: 20°F to 250°F (-4°C to 120°C)
- 285°F (140°C) optional seal
- Max Ambient Temp: 104°F (40°C)
- Max Working Press: 175 PSI (12 Bar)
- 250 PSI (17 Bar) on request
- Fluids: Water or Water/Glycol up to 50%
- Other Fluids - Contact WILO

Materials of Construction

- Impeller: Cast Bronze
- Cast Iron (optional)
- Shaft: 316L Stainless Steel
- Volute: Cast Iron (Cataphoresis Coated)
- Seal (Std): Silicon Carbide on Silicon Carbide
- HNBR Elastomer
- CrNiMo Spring



WILO USA LLC
1290 N 25th Ave
Melrose Park, IL 60160
Tel: (866) 945-6872
Fax: (708) 338-9455
www.WILO-USA.com

WILO Canada Inc.
Bay 7-2915 10th Ave. NE
Calgary, Alberta T2A 5L4
Tel: (866) 945-6236
Fax: (403) 277-9456
www.WILO-CANADA.com



WILO IL Submittal

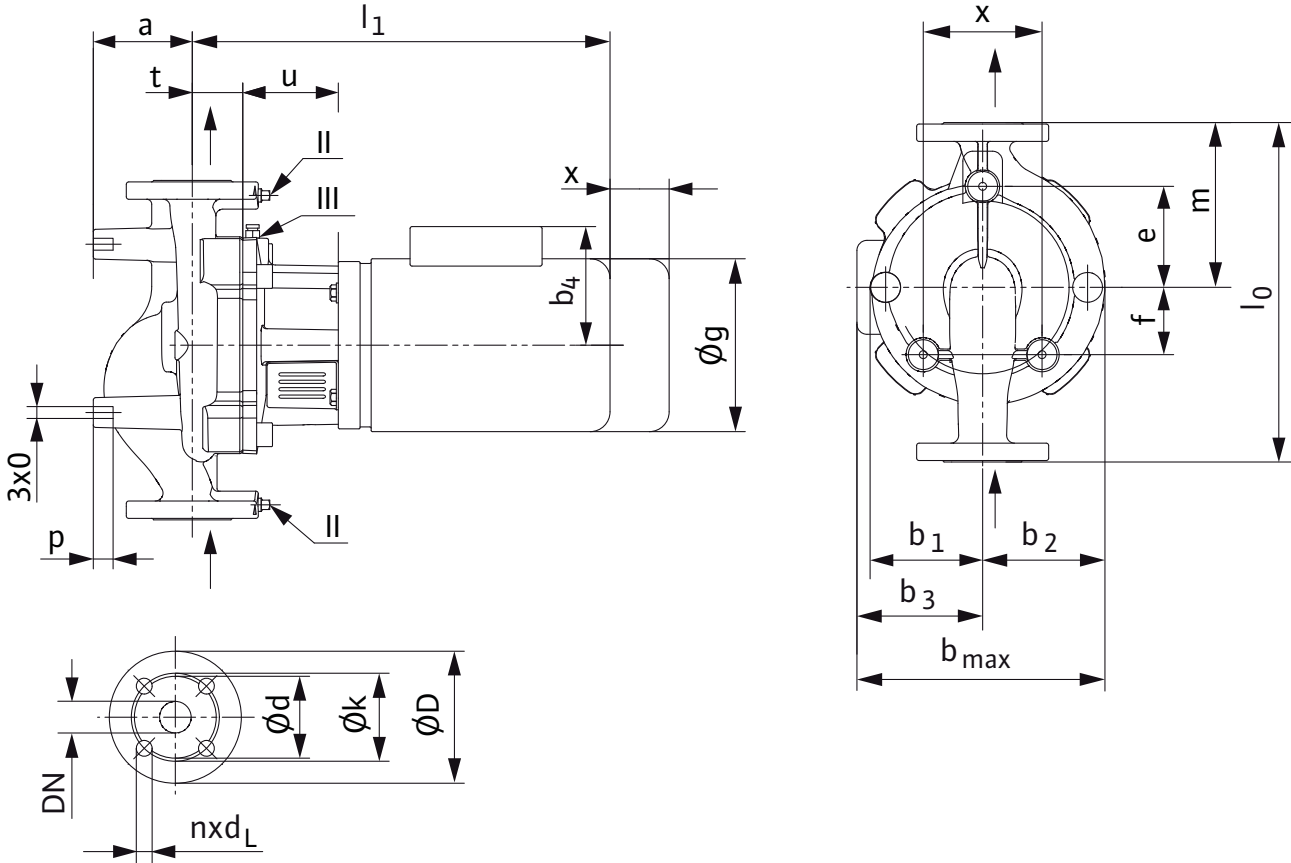
IL 4-25/700-4



Pumpen Intelligenz.

Pump Dimensions for: IL 4-25/700-4

	l_0	a	b_1	b_2	$b_{3\sim 1}$	$b_{3\sim 3}$	$b_{max\sim 1}$	$b_{max\sim 3}$	c	e	f	$g_{1\sim}$	$g_{3\sim}$	$l_{1\sim 1}$	$l_{1\sim 3}$	m	o	p	x	Wt max
Inch	20 1/2	5 1/4	6 1/4	7 3/4	-	5 5/8	-	5 5/8	7 7/8	9 1/4	2 3/8	-	7 1/4	-	21 3/8	10 3/8	1/2	7/8	6	203 lbs.
mm	521	132	158	196	-	143	-	339	200	234	60	-	182	-	541	262	13	20	152	92 kg.



Flange Dimensions: 4" 125 ANSI (250 # optional)

Details	Flange	D	d	k (BCD)	n x d _L
Inch	4	10	7	7 1/2	8 x 3/4
mm	100	254	176	191	8 x 19

Baldor Motor Information

Hp/kw	Volt	Phase	FLA
3 Hp (2.25 kw)	On Request	1	On Request
3 Hp (2.25 kw)	208-230/460/575	3	8.5-8.2/4.1/3.4

WILO USA LLC
1290 N 25th Ave
Melrose Park, IL 60160
Tel: (866) 945-6872
Fax: (708) 338-9455

www.WILO-USA.com

WILO Canada Inc.
Bay 7-2915 10th Ave. NE
Calgary, Alberta T2A 5L4
Tel: (866) 945-6236
Fax: (403) 277-9456

www.WILO-CANADA.com



WILO IL Submittal

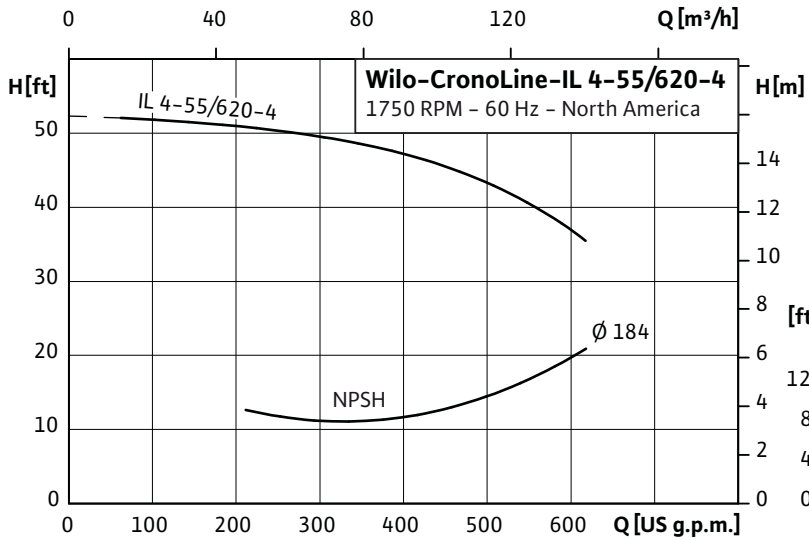
IL 4-55/620-4



Pumpen Intelligenz.

Project:	
Engineer:	
Contractor:	
Submitted By:	Date:
Approved By:	Date:

Tag #	Model #	Flow	Head	Hp	Volt/Phase	Motor Enclosure	RPM
	IL 4-55/620-4			7½			1750 (4 pole)

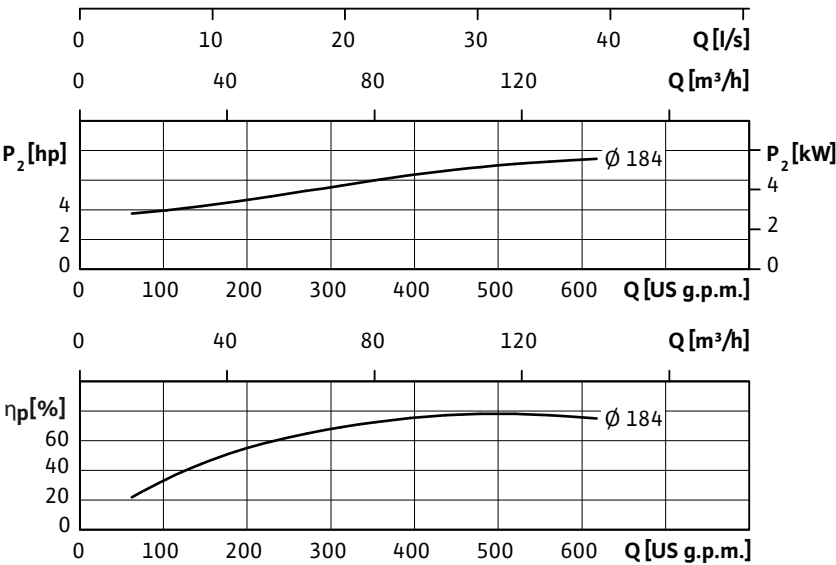


Applications

- Max Temp: 20°F to 250°F (-4°C to 120°C)
285°F (140°C) optional seal
- Max Ambient Temp: 104°F (40°C)
- Max Working Press: 175 PSI (12 Bar)
250 PSI (17 Bar) on request
- Fluids: Water or Water/Glycol up to 50%
Other Fluids - Contact WILO

Materials of Construction

- Impeller: Cast Bronze
Cast Iron (optional)
- Shaft: 316L Stainless Steel
- Volute: Cast Iron (Cataphoresis Coated)
- Seal (Std): Silicon Carbide on Silicon Carbide
HNBR Elastomer
CrNiMo Spring



Approval Stamp Here

WILO USA LLC
1290 N 25th Ave
Melrose Park, IL 60160
Tel: (866) 945-6872
Fax: (708) 338-9455 www.WILO-USA.com

WILO Canada Inc.
Bay 7-2915 10th Ave. NE
Calgary, Alberta T2A 5L4
Tel: (866) 945-6236
www.WILO-CANADA.com Fax: (403) 277-9456



WILO IL Submittal

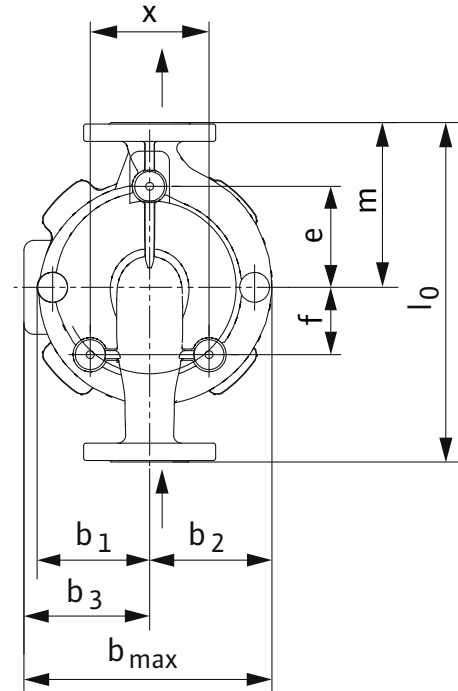
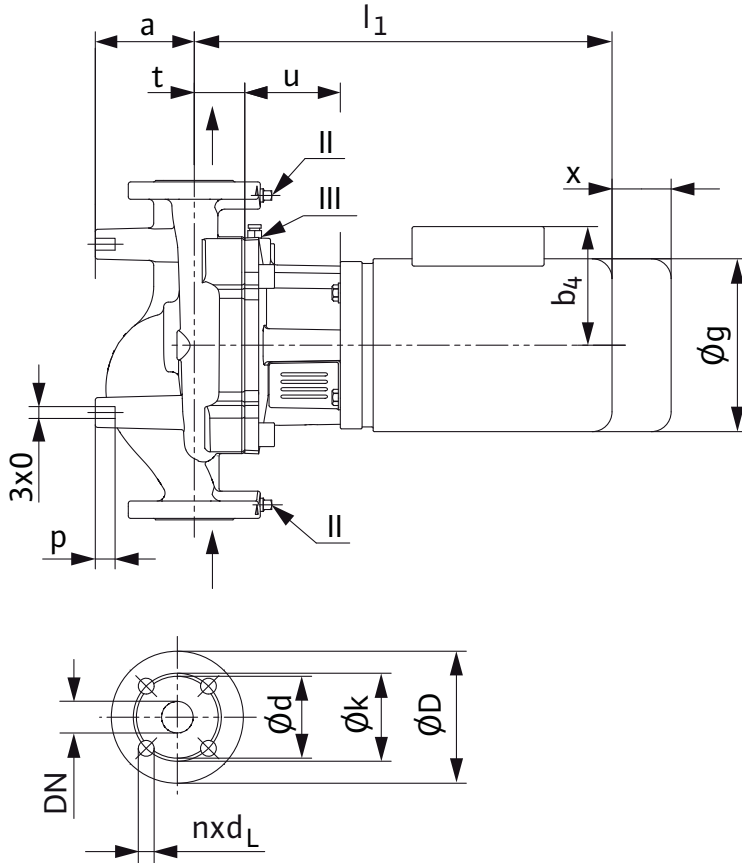
IL 4-55/620-4



Pumpen Intelligenz.

Pump Dimensions for: IL 4-55/620-4

	l_0	a	b_1	b_2	b_3 $1\sim$	b_3 $3\sim$	b_{max} $1\sim$	b_{max} $3\sim$	c	e	f	g $1\sim$	g $3\sim$	l_1 $1\sim$	l_1 $3\sim$	m	o	p	x	Wt max
Inch	22	6 $\frac{1}{8}$	6 $\frac{7}{8}$	8	-	8	-	15 $\frac{7}{8}$	8 $\frac{3}{4}$	9 $\frac{1}{4}$	3 $\frac{7}{8}$	-	7 $\frac{1}{4}$	-	26	10 $\frac{1}{4}$	$\frac{1}{2}$	$\frac{7}{8}$	5	287 lbs.
mm	559	155	173	202	-	201	-	403	220	233	99	-	182	-	659	260	13	20	152	130 kg.



Flange Dimensions: 4" 125 ANSI (250 # optional)

Details	Flange	D	d	k (BCD)	n x d _L
Inch	4	10	7	7 $\frac{1}{2}$	8 x $\frac{3}{4}$
mm	100	254	176	191	8 x 19

Baldor Motor Information

Hp/kw	Volt	Phase	FLA
7.5 Hp (5.75 kw)	208-230/460/575	3	21.4/10.7/8.2

WILO USA LLC
1290 N 25th Ave
Melrose Park, IL 60160
Tel: (866) 945-6872
Fax: (708) 338-9455

www.WILO-USA.com

WILO Canada Inc.
Bay 7-2915 10th Ave. NE
Calgary, Alberta T2A 5L4
Tel: (866) 945-6236
Fax: (403) 277-9456

www.WILO-CANADA.com



WILO IL Submittal

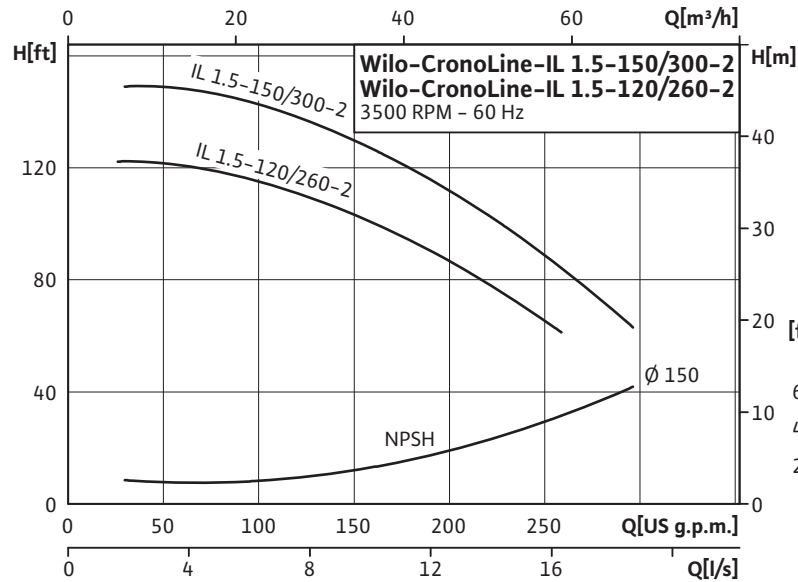
IL 1.5-150/300-2 & IL 1.5-120/260-2



Pumpen Intelligenz.

Project:	
Engineer:	
Contractor:	
Submitted By:	Date:
Approved By:	Date:

Tag #	Model #	Flow	Head	Hp	Volt/Phase	Motor Enclosure	RPM
	IL 1.5-150/300-2			10			3450 (2 pole)
	IL 1.5-120/260-2			7.5			3450 (2 pole)

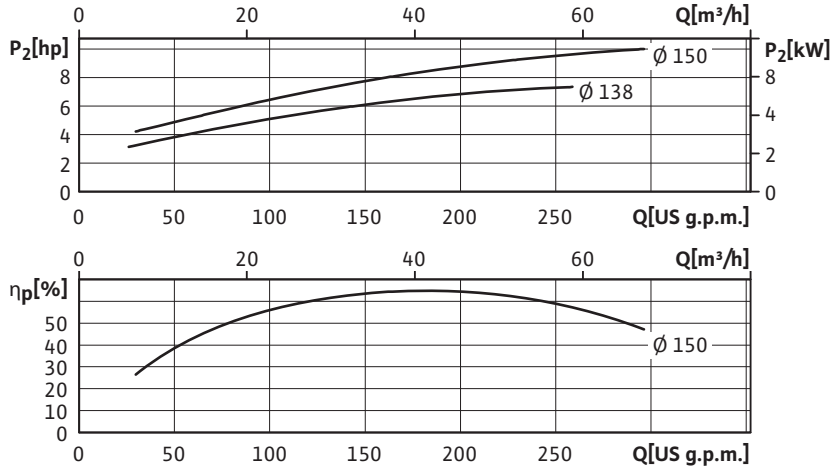


Applications

- Max Temp: 20°F to 250°F (-4°C to 120°C)
- 285°F (140°C) optional seal
- Max Ambient Temp: 104°F (40°C)
- Max Working Press: 175 PSI (12 Bar)
- 250 PSI (17 Bar) on request
- Fluids: Water or Water/Glycol up to 50%
- Other Fluids - Contact WILO

Materials of Construction

- Impeller: Cast Bronze
- Cast Iron (optional)
- Shaft: 316L Stainless Steel
- Volute: Cast Iron (Cataphoresis Coated)
- Seal (Std): Silicon Carbide on Silicon Carbide
- HNBR Elastomer
- CrNiMo Spring



WILO USA LLC
 1290 N 25th Ave
 Melrose Park, IL 60160
 Tel: (866) 945-6872
 Fax: (708) 338-9455

www.WILO-USA.com

WILO Canada Inc.
 Bay 7-2915 10th Ave. NE
 Calgary, Alberta T2A 5L4
 Tel: (866) 945-6236
 Fax: (403) 277-9456

www.WILO-CANADA.com



WILO IL Submittal

IL 1.5-150/300-2 & IL 1.5-120/260-2



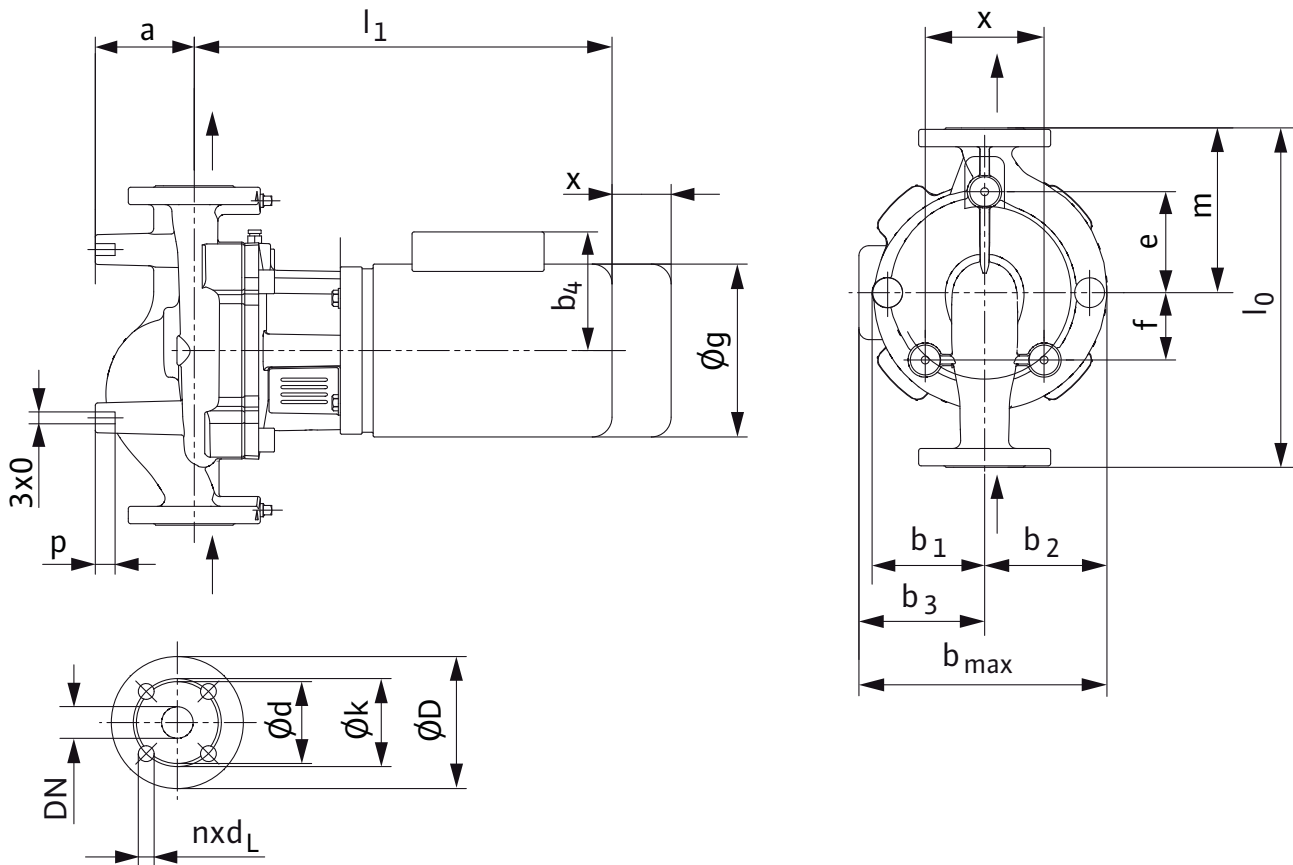
Pumpen Intelligenz.

Pump Dimensions for: IL 1.5-150/300-2

	l_0	a	b_1	b_2	b_3	b_{max}	c	e	f	g	l_1	m	o	p	x	Wt max
Inch	14½	¾	4½	5⅝	8	13	5⅝	5⅝	2¾	10¼	23⅝	7	¾	7/8	4	183 lbs.
mm	368	82	114	129	201	330	130	149	58	259	598	178	10	20	102	83 kg.

Pump Dimensions for: IL 1.5-120/260-2

	l_0	a	b_1	b_2	b_3	b_{max}	c	e	f	g	l_1	m	o	p	x	Wt max
Inch	14½	¾	4½	5⅝	6⅞	12	5⅝	5⅝	2¾	8⅝	22⅝	7	¾	7/8	4	157 lbs.
mm	368	82	114	129	175	304	130	149	58	218	563	178	10	20	102	71 kg.



Flange Dimensions: 1.5" 125 ANSI (250 # optional)

Details	Flange	D	d	k (BCD)	n x d _L
Inch	1½	6	3½	3⅞	4 x ⅝
mm	40	155	90	99	4 x 16

Baldor Motor Information

Hp/kw	Volt	Phase	FLA
10 Hp (0.75 kw)	208-230/460/575	3	25-23/11.5/9.2
7.5 Hp (0.75 kw)	208-230/460/575	3	18-17.2/8.6/7

WILO USA LLC
1290 N 25th Ave
Melrose Park, IL 60160
Tel: (866) 945-6872
Fax: (708) 338-9455

www.WILO-USA.com

WILO Canada Inc.
Bay 7-2915 10th Ave. NE
Calgary, Alberta T2A 5L4
Tel: (866) 945-6236
Fax: (403) 277-9456

www.WILO-CANADA.com



WILO IL Submittal

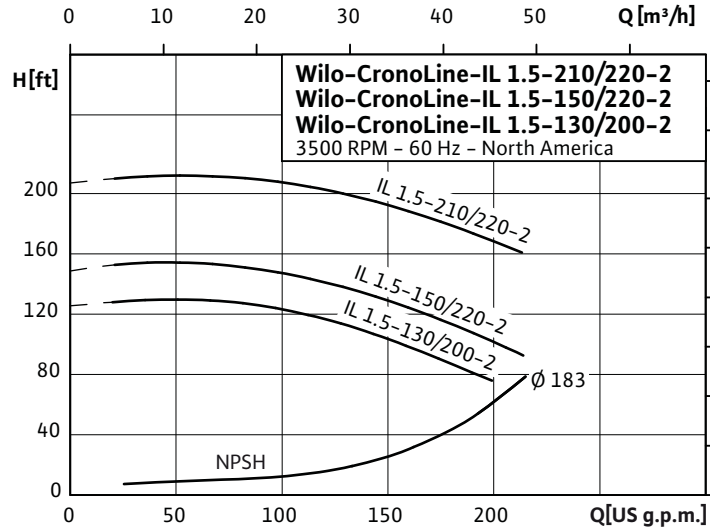
IL 1.5-210/220-2, IL 1.5-150/220-2,
IL 1.5-130/200-2



Pumpen Intelligenz.

Project:	
Engineer:	
Contractor:	
Submitted By:	Date:
Approved By:	Date:

Tag #	Model #	Flow	Head	Hp	Volt/Phase	Motor Enclosure	RPM
	IL 1.5-210/220-2			15			3450 (2 pole)
	IL 1.5-150/220-2			10			3450 (2 pole)
	IL 1.5-130/200-2			7.5			3450 (2 pole)

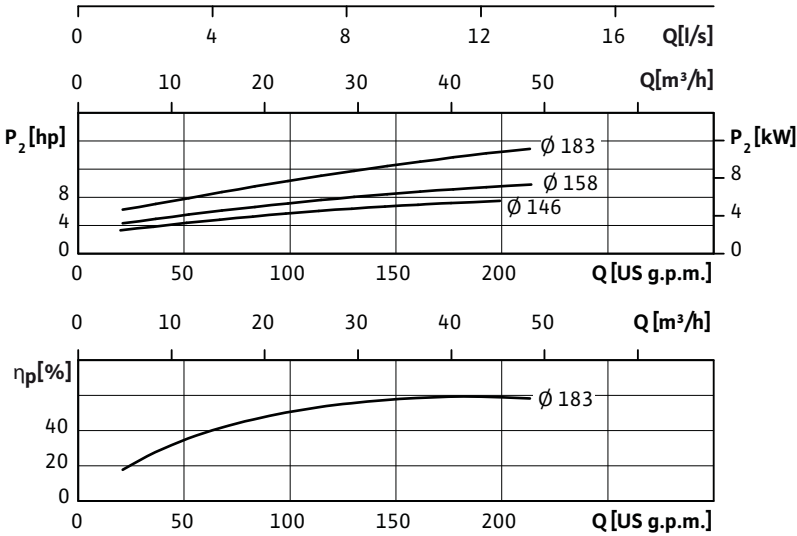


Applications

- Max Temp: 20°F to 250°F (-4°C to 120°C)
- 285°F (140°C) optional seal
- Max Ambient Temp: 104°F (40°C)
- Max Working Press: 175 PSI (12 Bar)
- 250 PSI (17 Bar) on request
- Fluids: Water or Water/Glycol up to 50%
- Other Fluids - Contact WILO

Materials of Construction

- Impeller: Cast Bronze
- Cast Iron (optional)
- Shaft: 316L Stainless Steel
- Volute: Cast Iron (Cataphoresis Coated)
- Seal (Std): Silicon Carbide on Silicon Carbide
- HNBR Elastomer
- CrNiMo Spring



Approval Stamp Here

WILO USA LLC
 1290 N 25th Ave
 Melrose Park, IL 60160
 Tel: (866) 945-6872
 Fax: (708) 338-9455

www.WILO-USA.com

WILO Canada Inc.
 Bay 7-2915 10th Ave. NE
 Calgary, Alberta T2A 5L4
 Tel: (866) 945-6236
 Fax: (403) 277-9456

www.WILO-CANADA.com



WILO IL Submittal

IL 1.5-210/220-2, IL 1.5-150/220-2,
IL 1.5-130/200-2



Pumpen Intelligenz.

Pump Dimensions for: IL 1.5-210/220-2

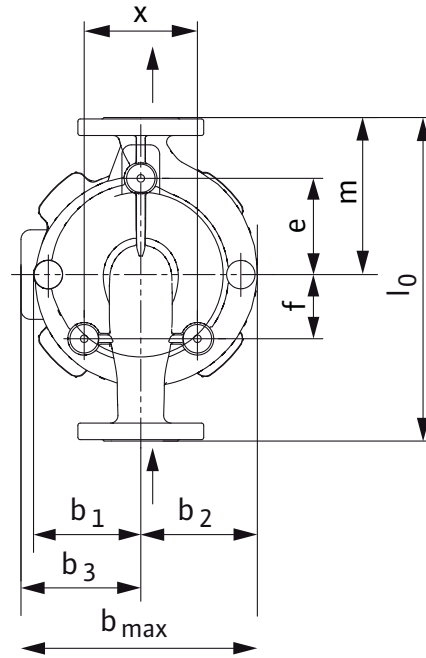
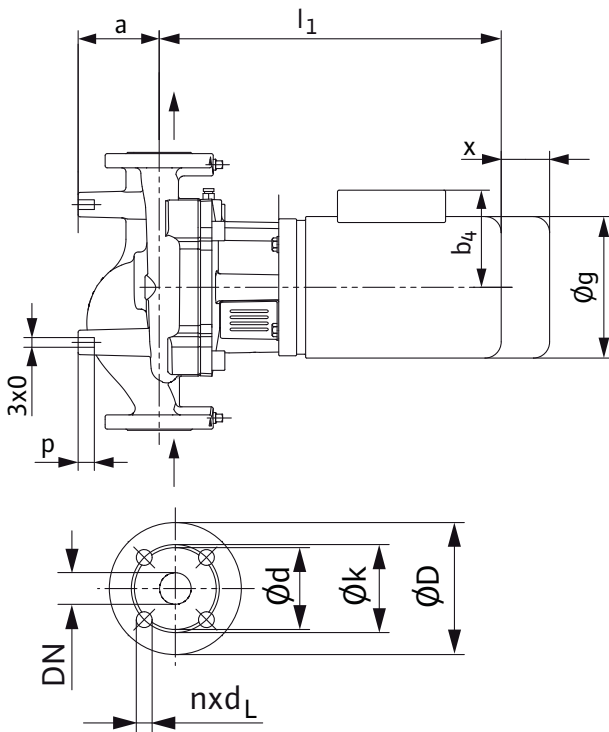
	l_0	a	b_1	b_2	b_3	b_{max}	c	e	f	g	l_1	m	o	p	x	Wt max
Inch	17	4 ³ / ₈	5 ³ / ₄	5 ⁷ / ₈	8	13 ⁷ / ₈	7 ¹ / ₈	5 ³ / ₈	3 ¹ / ₈	10 ¹ / ₄	23 ¹ / ₄	8	3 ³ / ₈	7 ⁷ / ₈	4	229 lbs.
mm	432	110	145	149	201	350	180	137	78	259	590	203	10	20	102	104 kg.

Pump Dimensions for: IL 1.5-150/220-2

	l_0	a	b_1	b_2	b_3	b_{max}	c	e	f	g	l_1	m	o	p	x	Wt max
Inch	17	4 ³ / ₈	5 ³ / ₄	5 ⁷ / ₈	8	13 ⁷ / ₈	7 ¹ / ₈	5 ³ / ₈	3 ¹ / ₈	10 ¹ / ₄	22 ¹ / ₄	8	3 ³ / ₈	7 ⁷ / ₈	4	216 lbs.
mm	432	110	145	149	201	350	180	137	78	259	566	203	10	20	102	98 kg.

Pump Dimensions for: IL 1.5-130/200-2

	l_0	a	b_1	b_2	b_3	b_{max}	c	e	f	g	l_1	m	o	p	x	Wt max
Inch	17	4 ³ / ₈	5 ³ / ₄	5 ⁷ / ₈	6 ⁷ / ₈	12 ³ / ₄	7 ¹ / ₈	5 ³ / ₈	3 ¹ / ₈	8 ⁵ / ₈	22 ³ / ₈	8	3 ³ / ₈	7 ⁷ / ₈	4	148 lbs.
mm	432	110	145	149	175	324	180	137	78	218	564	203	10	20	102	67 kg.



Flange Dimensions: 1.5" 125 ANSI (250 # optional)

Details	Flange	D	d	k (BCD)	n x d _L
Inch	1 ¹ / ₂	6	3 ¹ / ₂	3 ⁷ / ₈	4 x 5 ⁸ / ₁₆
mm	40	155	90	99	4 x 16

Baldor Motor Information

Hp/kw	Volt	Phase	FLA
15 Hp (0.75 kw)	208-230/460/575	3	37.5-34/17/13.5
10 Hp (0.75 kw)	208-230/460/575	3	25-23/11.5/9.2
7.5 Hp (0.75 kw)	208-230/460/575	3	18-17.2/8.6/7

WILO USA LLC
1290 N 25th Ave
Melrose Park, IL 60160
Tel: (866) 945-6872
Fax: (708) 338-9455

www.WILO-USA.com

WILO Canada Inc.
Bay 7-2915 10th Ave. NE
Calgary, Alberta T2A 5L4
Tel: (866) 945-6236
Fax: (403) 277-9456

www.WILO-CANADA.com



WILO IL Submittal

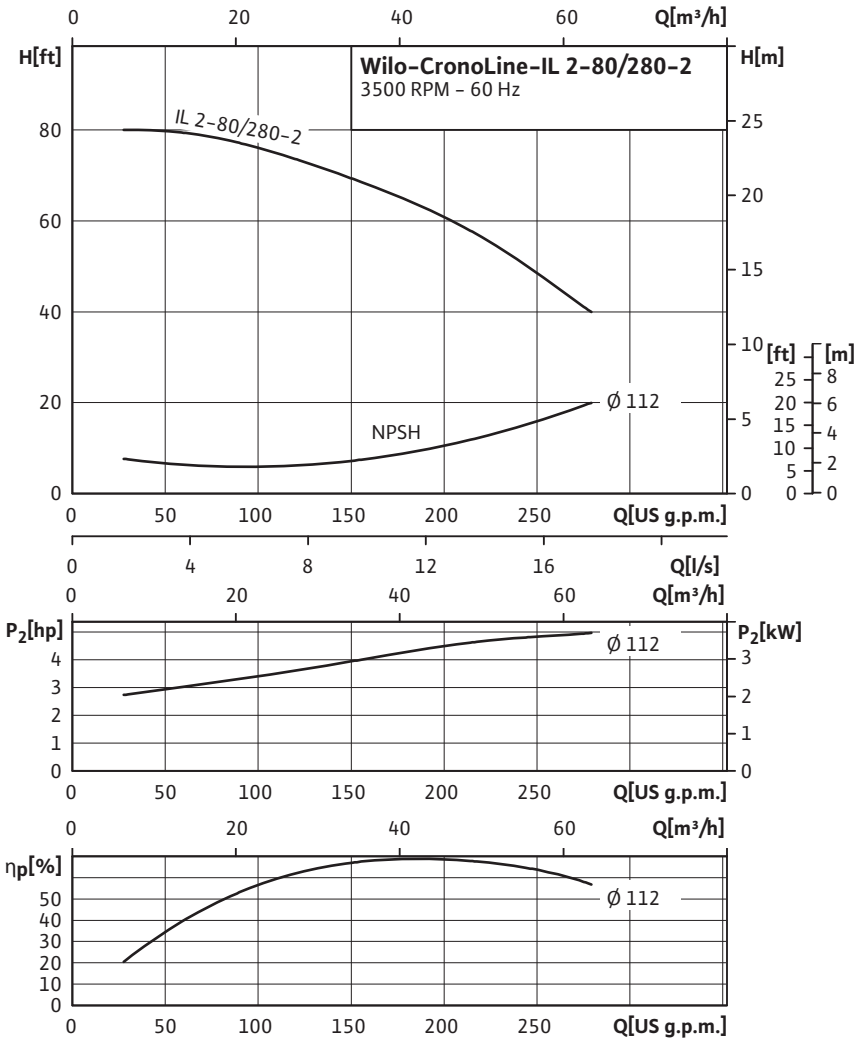
IL 2-80/280-2



Pumpen Intelligenz.

Project:	
Engineer:	
Contractor:	
Submitted By:	Date:
Approved By:	Date:

Tag #	Model #	Flow	Head	Hp	Volt/Phase	Motor Enclosure	RPM
	IL 2-80/280-2			5			3450 (2 pole)



Applications

- Max Temp: 20°F to 250°F (-4°C to 120°C)
- 285°F (140°C) optional seal
- Max Ambient Temp: 104°F (40°C)
- Max Working Press: 175 PSI (12 Bar)
- 250 PSI (17 Bar) on request
- Fluids: Water or Water/Glycol up to 50%
- Other Fluids - Contact WILO

Materials of Construction

- Impeller: Cast Bronze
- Cast Iron (optional)
- Shaft: 316L Stainless Steel
- Volute: Cast Iron (Cataphoresis Coated)
- Seal (Std): Silicon Carbide on Silicon Carbide
- HNBR Elastomer
- CrNiMo Spring

Approval Stamp Here

WILO USA LLC
1290 N 25th Ave
Melrose Park, IL 60160
Tel: (866) 945-6872
Fax: (708) 338-9455 www.WILO-USA.com

WILO Canada Inc.
Bay 7-2915 10th Ave. NE
Calgary, Alberta T2A 5L4
Tel: (866) 945-6236
www.WILO-CANADA.com Fax: (403) 277-9456



WILO IL Submittal

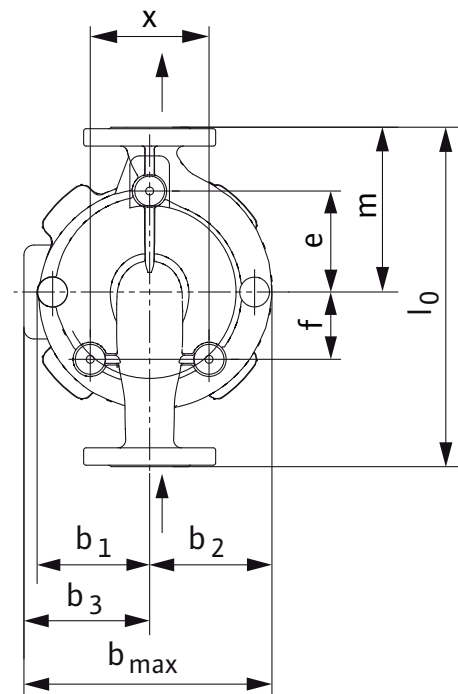
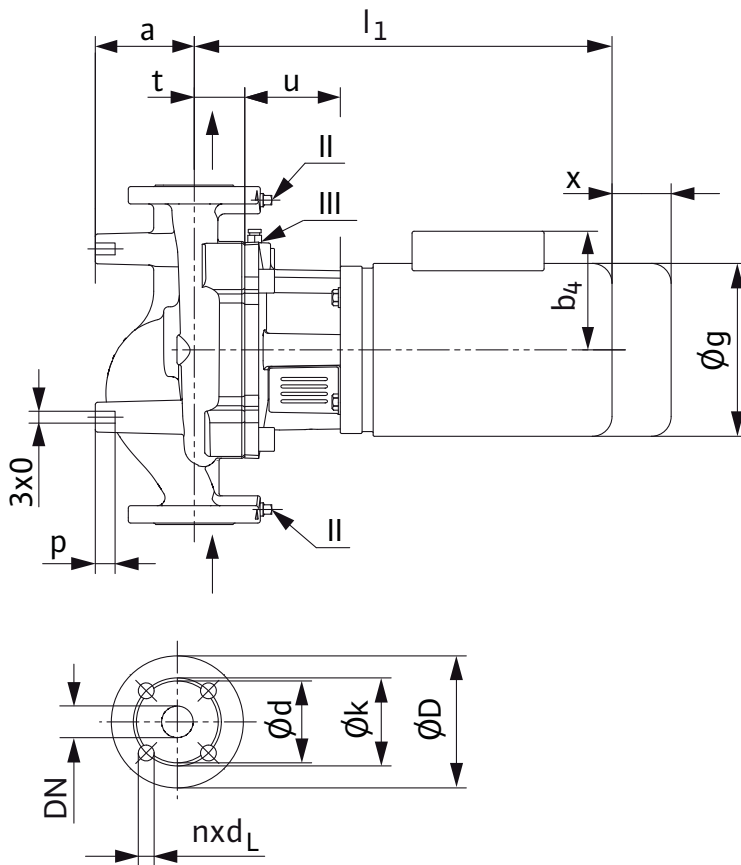
IL 2-80/280-2



Pumpen Intelligenz.

Pump Dimensions for: IL 2-80/280-2

	l_0	a	b_1	b_2	b_3	b_{max}	c	e	f	g	l_1	m	o	p	x	Wt_{max}
Inch	14½	4⅞	4	4¾	6⅜	11⅞	5½	3⅞	2⅞	8⅝	21¾	6⅝	¾	7/8	4	146 lbs.
mm	368	105	102	119	162	281	140	99	54	218	552	169	10	20	100	66 kg.



Flange Dimensions: 2" 125 ANSI (250 # optional)

Details	Flange	D	d	k (BCD)	n x d _L
Inch	2	6½	4¼	4¾	4 x ¾
mm	50	165	106	121	4 x 19

Baldor Motor Information

Hp/kw	Volt	Phase	FLA
5 Hp (3.75 kw)	208-230/460/575	3	13-12/6/4.8

WILO USA LLC
1290 N 25th Ave
Melrose Park, IL 60160
Tel: (866) 945-6872
Fax: (708) 338-9455

www.WILO-USA.com

WILO Canada Inc.
Bay 7-2915 10th Ave. NE
Calgary, Alberta T2A 5L4
Tel: (866) 945-6236
Fax: (403) 277-9456

www.WILO-CANADA.com



WILO IL Submittal

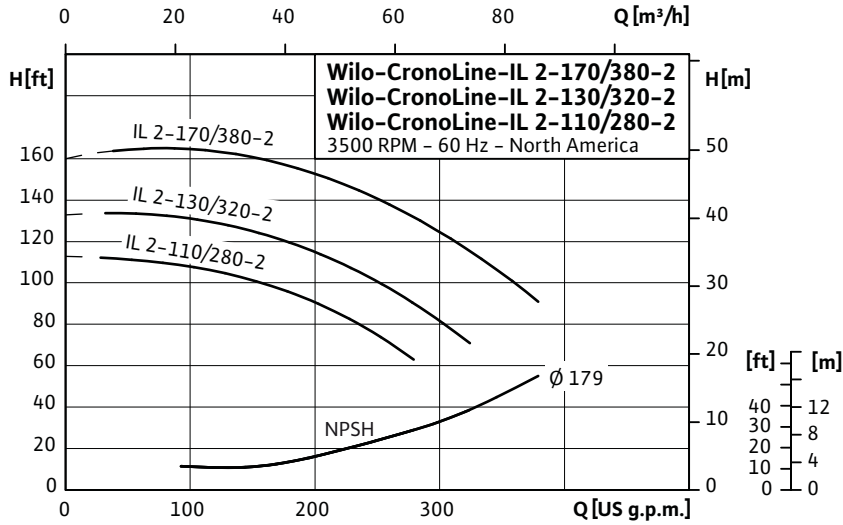
IL 2-170/380-2, IL 2-130/320-2,
IL 2-110/280-2



Pumpen Intelligenz.

Project:	
Engineer:	
Contractor:	
Submitted By:	Date:
Approved By:	Date:

Tag #	Model #	Flow	Head	Hp	Volt/Phase	Motor Enclosure	RPM
	IL 2-170/380-2			15			3450 (2 pole)
	IL 2-130/320-2			10			3450 (2 pole)
	IL 2-110/280-2			7.5			3450 (2 pole)

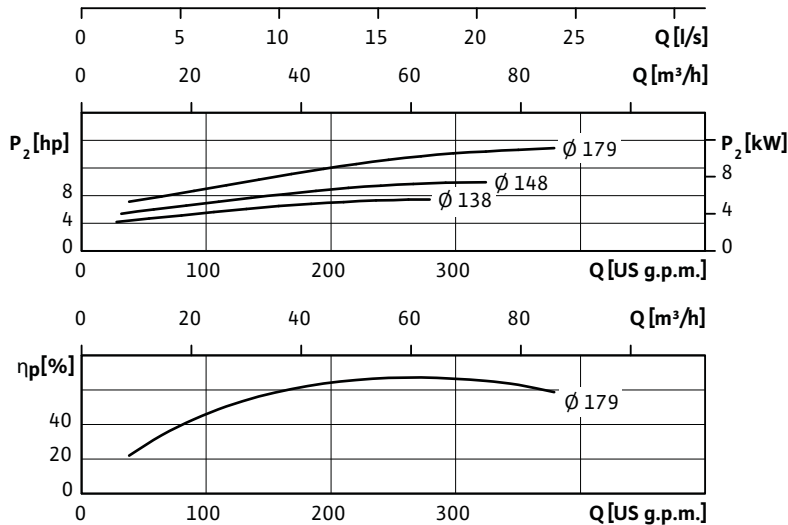


Applications

- Max Temp: 20°F to 250°F (-4°C to 120°C)
- 285°F (140°C) optional seal
- Max Ambient Temp: 104°F (40°C)
- Max Working Press: 175 PSI (12 Bar)
- 250 PSI (17 Bar) on request
- Fluids: Water or Water/Glycol up to 50%
- Other Fluids - Contact WILO

Materials of Construction

- Impeller: Cast Bronze
- Cast Iron (optional)
- Shaft: 316L Stainless Steel
- Volute: Cast Iron (Cataphoresis Coated)
- Seal (Std): Silicon Carbide on Silicon Carbide
- HNBR Elastomer
- CrNiMo Spring



Approval Stamp Here

WILO USA LLC
1290 N 25th Ave
Melrose Park, IL 60160
Tel: (866) 945-6872
Fax: (708) 338-9455 www.WILO-USA.com

WILO Canada Inc.
Bay 7-2915 10th Ave. NE
Calgary, Alberta T2A 5L4
Tel: (866) 945-6236
www.WILO-CANADA.com Fax: (403) 277-9456



WILO IL Submittal

IL 2-170/380-2, IL 2-130/320-2,
IL 2-110/280-2



Pumpen Intelligenz.

Pump Dimensions for: IL 2-170/380-2

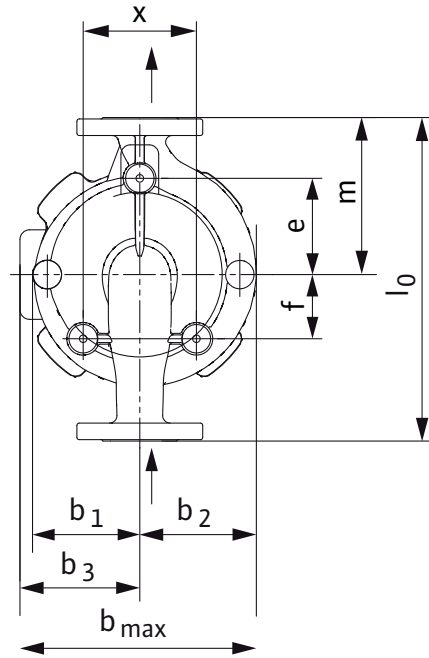
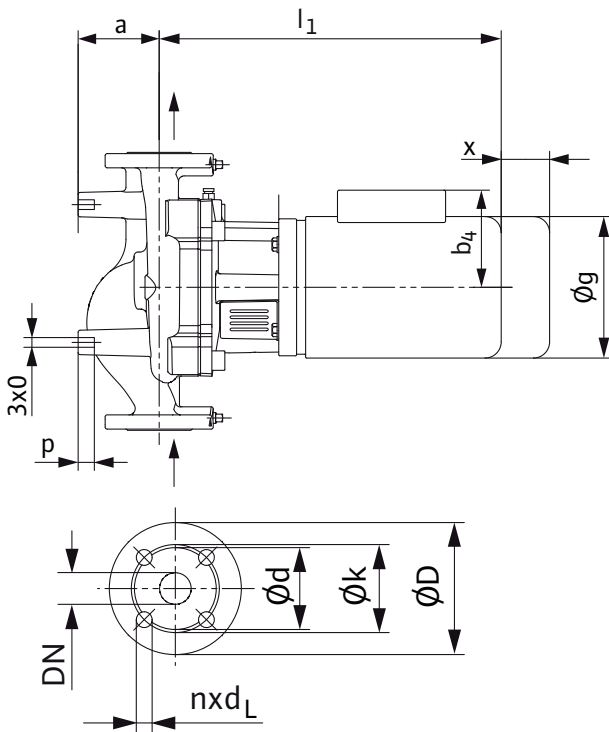
	l_0	a	b_1	b_2	b_3	b_{max}	c	e	f	g	l_1	m	o	p	x	Wt max
Inch	15	3 ⁵ / ₈	4 ³ / ₄	5 ¹ / ₂	8	13 ³ / ₈	6 ¹ / ₂	4 ⁵ / ₈	1 ⁷ / ₈	10 ¹ / ₄	23 ³ / ₄	7 ³ / ₈	3 ³ / ₈	7 ⁷ / ₈	4	223 lbs.
mm	381	90	120	139	201	340	164	117	48	259	602	186	10	20	102	101 kg.

Pump Dimensions for: IL 2-130/320-2

	l_0	a	b_1	b_2	b_3	b_{max}	c	e	f	g	l_1	m	o	p	x	Wt max
Inch	15	3 ⁵ / ₈	4 ³ / ₄	5 ¹ / ₂	8	13 ³ / ₈	6 ¹ / ₂	4 ⁵ / ₈	1 ⁷ / ₈	10 ¹ / ₄	22 ³ / ₄	7 ³ / ₈	3 ³ / ₈	7 ⁷ / ₈	4	207 lbs.
mm	381	90	120	139	201	340	164	117	48	259	577	186	10	20	102	94 kg.

Pump Dimensions for: IL 2-110/280-2

	l_0	a	b_1	b_2	b_3	b_{max}	c	e	f	g	l_1	m	o	p	x	Wt max
Inch	15	3 ⁵ / ₈	4 ³ / ₄	5 ¹ / ₂	6 ⁷ / ₈	12 ³ / ₈	6 ¹ / ₂	4 ⁵ / ₈	1 ⁷ / ₈	8 ⁵ / ₈	22 ⁷ / ₈	7 ³ / ₈	3 ³ / ₈	7 ⁷ / ₈	4	139 lbs.
mm	381	90	120	139	175	314	164	117	48	218	579	186	10	20	102	63 kg.



Flange Dimensions: 2" 125 ANSI (250 # optional)

Details	Flange	D	d	k (BCD)	n x d _L
Inch	2	6 ¹ / ₂	4 ¹ / ₄	4 ³ / ₄	4 x 3 ⁴ / ₁₆
mm	50	165	106	121	4 x 19

Baldor Motor Information

Hp/kw	Volt	Phase	FLA
15 Hp (11.25 kw)	208-230/460/575	3	37.5-34/17/13.5
10 Hp (7.5 kw)	208-230/460/575	3	25-23/11.5/9.2
7.5 Hp (5.75 kw)	208-230/460/575	3	18-17.2/8.6/7

WILO USA LLC
1290 N 25th Ave
Melrose Park, IL 60160
Tel: (866) 945-6872
Fax: (708) 338-9455

www.WILO-USA.com

WILO Canada Inc.
Bay 7-2915 10th Ave. NE
Calgary, Alberta T2A 5L4
Tel: (866) 945-6236
Fax: (403) 277-9456

www.WILO-CANADA.com



WILO IL Submittal

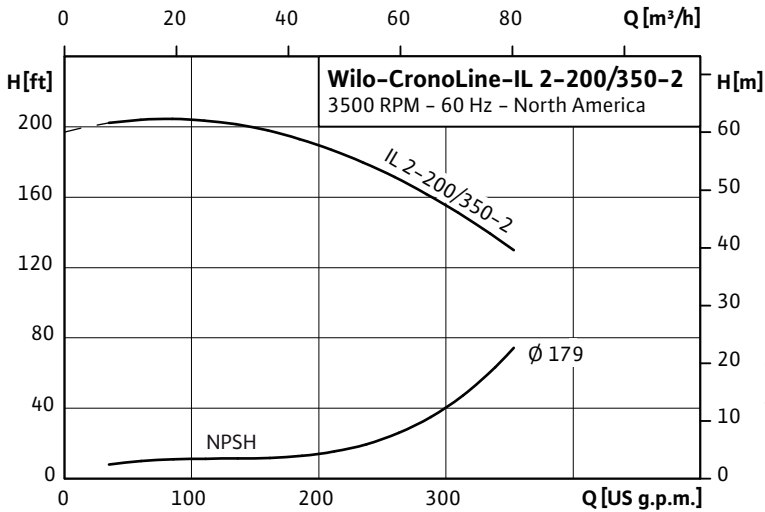
IL 2-200/350-2



Pumpen Intelligenz.

Project:	
Engineer:	
Contractor:	
Submitted By:	Date:
Approved By:	Date:

Tag #	Model #	Flow	Head	Hp	Volt/Phase	Motor Enclosure	RPM
	IL 2-200/350-2			20			3450 (2 pole)

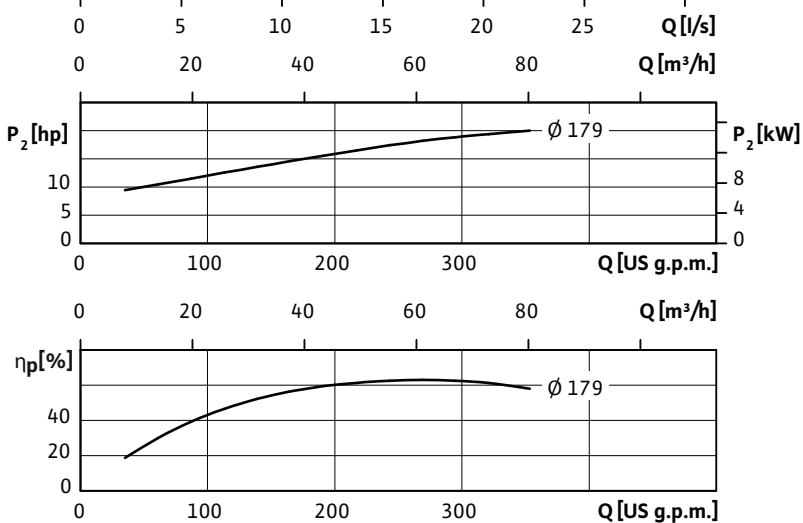


Applications

- Max Temp: 20°F to 250°F (-4°C to 120°C)
- 285°F (140°C) optional seal
- Max Ambient Temp: 104°F (40°C)
- Max Working Press: 175 PSI (12 Bar)
- 250 PSI (17 Bar) on request
- Fluids: Water or Water/Glycol up to 50%
- Other Fluids - Contact WILO

Materials of Construction

- Impeller: Cast Bronze
- Cast Iron (optional)
- Shaft: 316L Stainless Steel
- Volute: Cast Iron (Cataphoresis Coated)
- Seal (Std): Silicon Carbide on Silicon Carbide
- HNBR Elastomer
- CrNiMo Spring



Approval Stamp Here

WILO USA LLC
1290 N 25th Ave
Melrose Park, IL 60160
Tel: (866) 945-6872
Fax: (708) 338-9455 www.WILO-USA.com

WILO Canada Inc.
Bay 7-2915 10th Ave. NE
Calgary, Alberta T2A 5L4
Tel: (866) 945-6236
www.WILO-CANADA.com Fax: (403) 277-9456



WILO IL Submittal

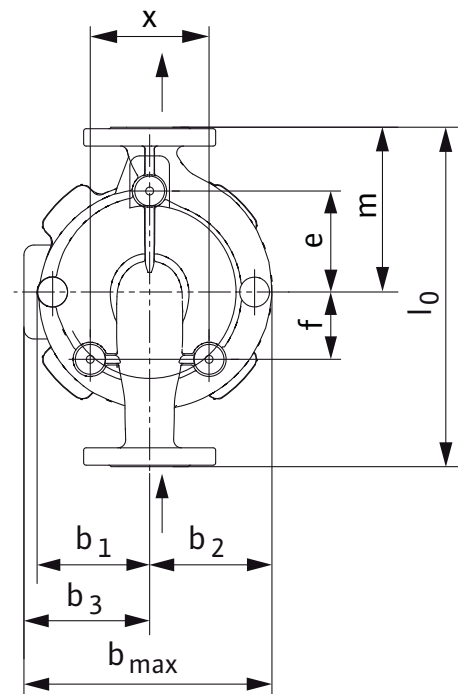
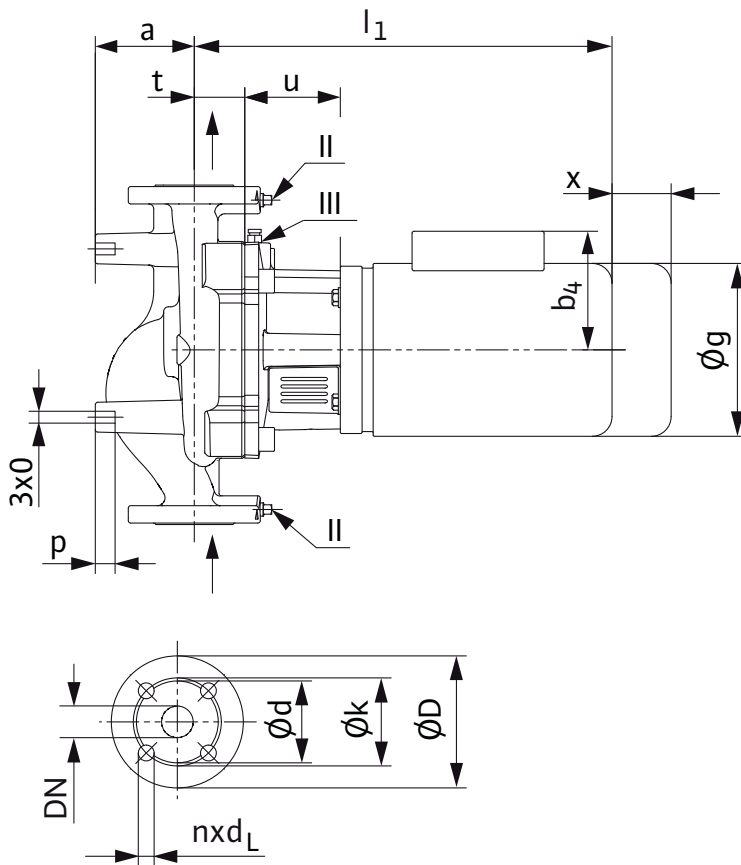
IL 2-200/350-2



Pumpen Intelligenz.

Pump Dimensions for: IL 2-200/350-2

	l_0	a	b_1	b_2	b_3	b_{max}	c	e	f	g	l_1	m	o	p	x	Wt_{max}
Inch	17½	4¾	5¾	5⅞	8¼	14⅛	6⅜	5¼	2¾	10¼	25½	8	¾	7/8	4	260 lbs.
mm	444	120	145	150	207	357	160	132	70	259	646	202	10	20	102	118 kg.



Flange Dimensions: 2" 125 ANSI (250 # optional)

Details	Flange	D	d	k (BCD)	n x d _L
Inch	2	6½	4¼	4¾	4 x ¾
mm	50	165	106	121	4 x 19

Baldor Motor Information

Hp/kw	Volt	Phase	FLA
20 Hp (15 kw)	208-230/460/575	3	50.1-46/23/18.5

WILO USA LLC
1290 N 25th Ave
Melrose Park, IL 60160
Tel: (866) 945-6872
Fax: (708) 338-9455

www.WILO-USA.com

WILO Canada Inc.
Bay 7-2915 10th Ave. NE
Calgary, Alberta T2A 5L4
Tel: (866) 945-6236
Fax: (403) 277-9456

www.WILO-CANADA.com



WILO IL Submittal

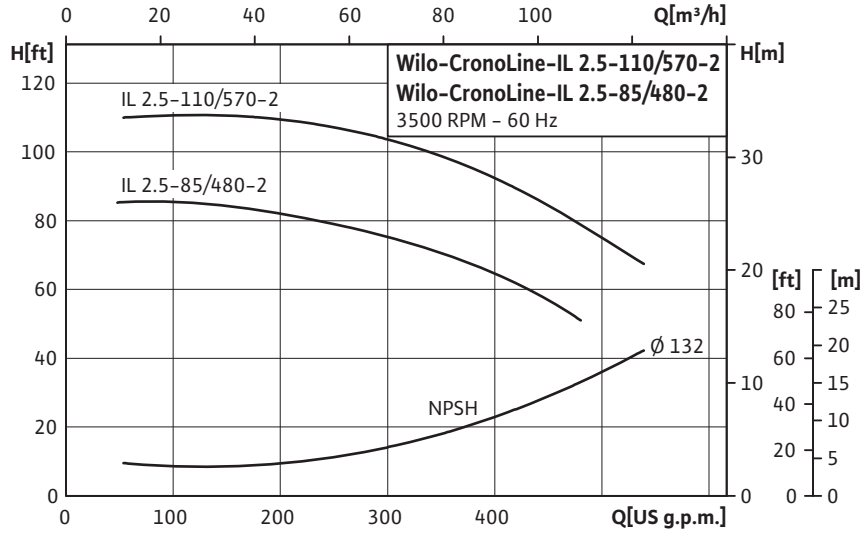
IL 2.5-110/570-2 & IL 2.5-85/480-2



Pumpen Intelligenz.

Project:	
Engineer:	
Contractor:	
Submitted By:	Date:
Approved By:	Date:

Tag #	Model #	Flow	Head	Hp	Volt/Phase	Motor Enclosure	RPM
	IL 2.5-110/570-2			15			3450 (2 pole)
	IL 2.5-85/480-2			10			3450 (2 pole)

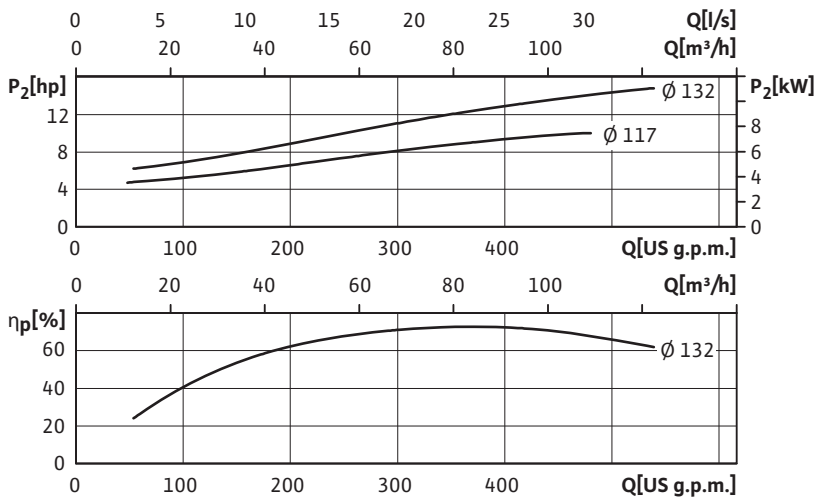


Applications

- Max Temp: 20°F to 250°F (-4°C to 120°C)
- 285°F (140°C) optional seal
- Max Ambient Temp: 104°F (40°C)
- Max Working Press: 175 PSI (12 Bar)
- 250 PSI (17 Bar) on request
- Fluids: Water or Water/Glycol up to 50%
- Other Fluids - Contact WILO

Materials of Construction

- Impeller: Cast Bronze
- Cast Iron (optional)
- Shaft: 316L Stainless Steel
- Volute: Cast Iron (Cataphoresis Coated)
- Seal (Std): Silicon Carbide on Silicon Carbide
- HNBR Elastomer
- CrNiMo Spring



WILO USA LLC
 1290 N 25th Ave
 Melrose Park, IL 60160
 Tel: (866) 945-6872
 Fax: (708) 338-9455
www.WILO-USA.com

WILO Canada Inc.
 Bay 7-2915 10th Ave. NE
 Calgary, Alberta T2A 5L4
 Tel: (866) 945-6236
 Fax: (403) 277-9456
www.WILO-CANADA.com



WILO IL Submittal

IL 2.5-110/570-2 & IL 2.5-85/480-2



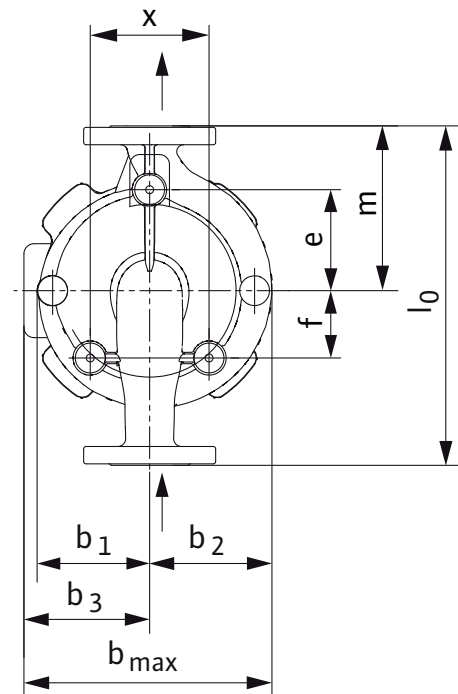
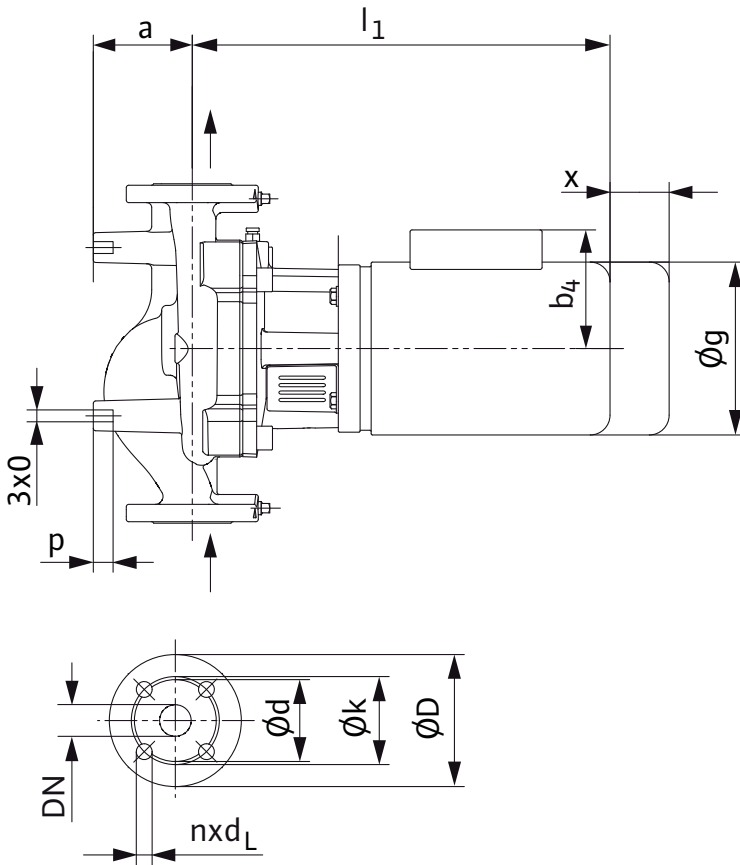
Pumpen Intelligenz.

Pump Dimensions for: IL 2.5-110/570-2

	l_0	a	b_1	b_2	b_3	b_{max}	c	e	f	g	l_1	m	o	p	x	Wt_{max}
Inch	15	4 $\frac{3}{4}$	4 $\frac{1}{2}$	5 $\frac{1}{4}$	8	13 $\frac{1}{4}$	5 $\frac{1}{2}$	4	2 $\frac{3}{8}$	10 $\frac{1}{4}$	25 $\frac{5}{8}$	7	$\frac{1}{2}$	$\frac{7}{8}$	5	216 lbs.
mm	368	82	114	129	201	330	130	149	58	259	598	178	10	20	102	83 kg.

Pump Dimensions for: IL 2.5-85/480-2

	l_0	a	b_1	b_2	b_3	b_{max}	c	e	f	g	l_1	m	o	p	x	Wt_{max}
Inch	15	4 $\frac{3}{4}$	4 $\frac{1}{2}$	5 $\frac{1}{4}$	8	13 $\frac{1}{4}$	5 $\frac{1}{2}$	4	2 $\frac{3}{8}$	10 $\frac{1}{4}$	24 $\frac{1}{8}$	7	$\frac{1}{2}$	$\frac{7}{8}$	5	209 lbs.
mm	368	82	114	129	175	304	130	149	58	218	563	178	10	20	102	71 kg.



Flange Dimensions: 2.5" 125 ANSI (250 # optional)

Details	Flange	D	d	k (BCD)	n x d _L
Inch	2 $\frac{1}{2}$	4 $\frac{3}{8}$	5	5 $\frac{1}{2}$	4 x $\frac{3}{4}$
mm	65	110	126	140	4 x 19

Baldor Motor Information

Hp/kw	Volt	Phase	FLA
15 Hp (11.25 kw)	208-230/460/575	3	37.5-34/17/13.5
10 Hp (7.5 kw)	208-230/460/575	3	25-23/11.5/9.2

WILO USA LLC
 1290 N 25th Ave
 Melrose Park, IL 60160
 Tel: (866) 945-6872
 Fax: (708) 338-9455

www.WILO-USA.com

WILO Canada Inc.
 Bay 7-2915 10th Ave. NE
 Calgary, Alberta T2A 5L4
 Tel: (866) 945-6236
 Fax: (403) 277-9456

www.WILO-CANADA.com



WILO IL Submittal

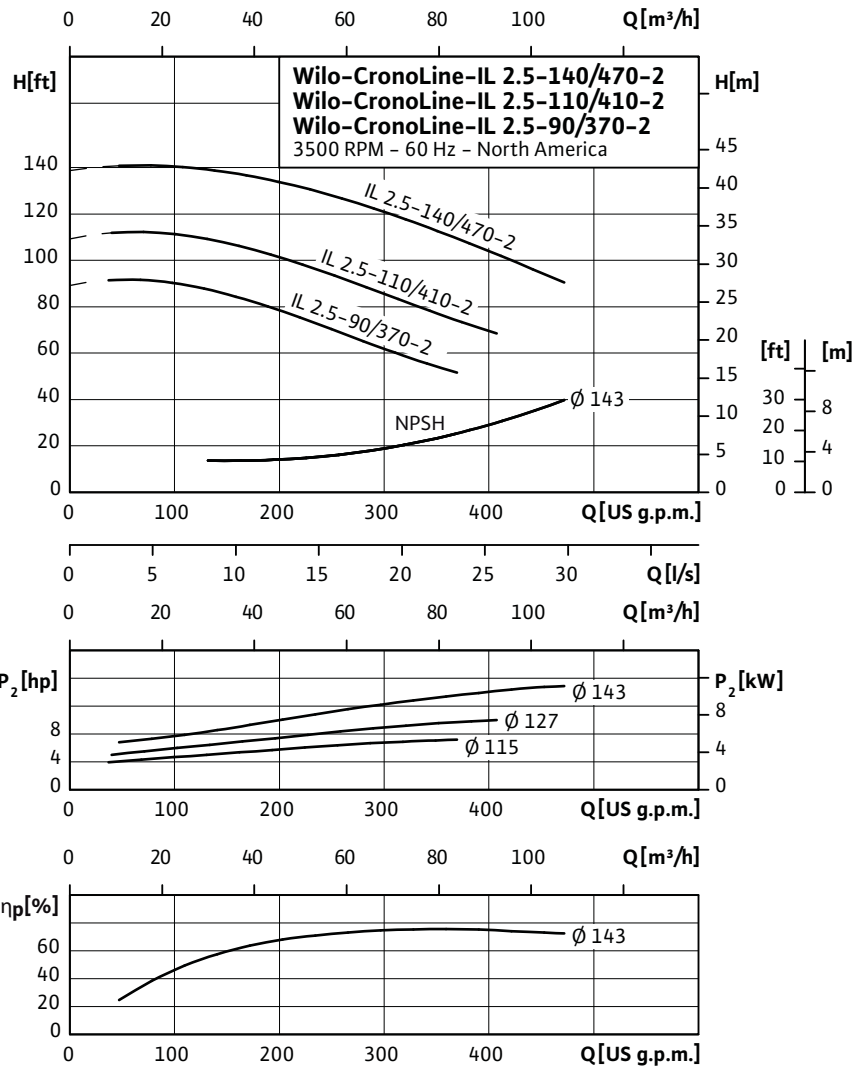
IL 2.5-140/470-2, IL 2.5-110/410-2,
IL 2.5-90/370-2



Pumpen Intelligenz.

Project:	
Engineer:	
Contractor:	
Submitted By:	Date:
Approved By:	Date:

Tag #	Model #	Flow	Head	Hp	Volt/Phase	Motor Enclosure	RPM
	IL 2.5-140/470-2			15			3450 (2 pole)
	IL 2.5-110/410-2			10			3450 (2 pole)
	IL 2.5-90/370-2			7.5			3450 (2 pole)



Approval Stamp Here

WILO USA LLC
 1290 N 25th Ave
 Melrose Park, IL 60160
 Tel: (866) 945-6872
 Fax: (708) 338-9455
www.WILO-USA.com

WILO Canada Inc.
 Bay 7-2915 10th Ave. NE
 Calgary, Alberta T2A 5L4
 Tel: (866) 945-6236
 Fax: (403) 277-9456
www.WILO-CANADA.com



WILO IL Submittal

IL 2.5-140/470-2, IL 2.5-110/410-2,
IL 2.5-90/370-2



Pumpen Intelligenz.

Pump Dimensions for: IL 2.5-140/470-2

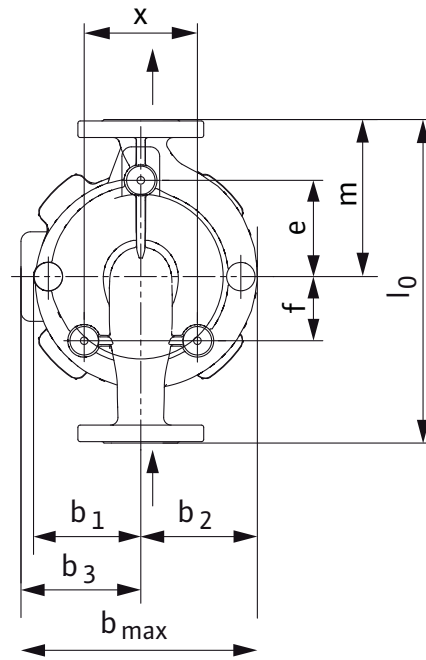
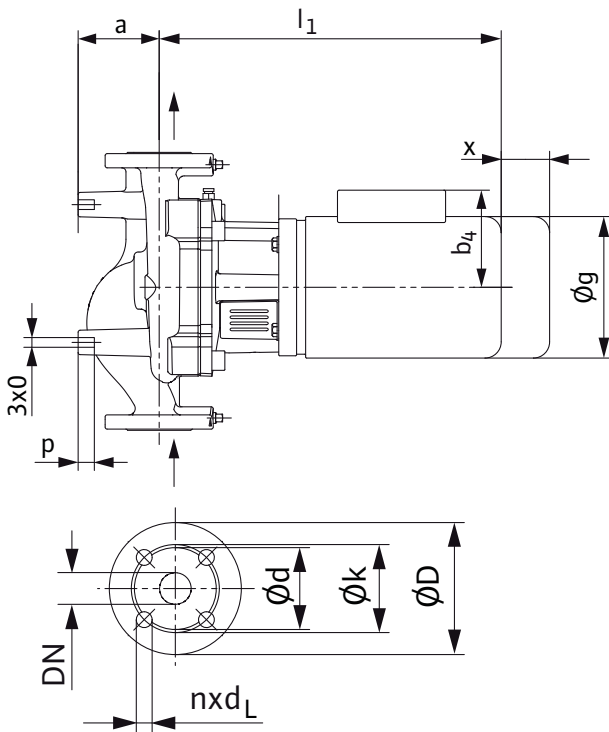
	l_0	a	b_1	b_2	b_3	b_{max}	c	e	f	g	l_1	m	o	p	x	Wt_{max}
Inch	17½	4¾	4¾	5⅞	8	13¾	7⅞	5½	2¾	10¼	26	8½	½	7/8	5	234 lbs.
mm	445	110	127	147	201	348	180	140	60	259	659	216	13	20	127	106 kg.

Pump Dimensions for: IL 2.5-110/410-2

	l_0	a	b_1	b_2	b_3	b_{max}	c	e	f	g	l_1	m	o	p	x	Wt_{max}
Inch	17½	4¾	4¾	5⅞	8	13¾	7⅞	5½	2¾	10¼	25⅞	8½	½	7/8	5	218 lbs.
mm	445	110	127	147	201	348	180	140	60	259	633	216	13	20	127	99 kg.

Pump Dimensions for: IL 2.5-90/370-2

	l_0	a	b_1	b_2	b_3	b_{max}	c	e	f	g	l_1	m	o	p	x	Wt_{max}
Inch	17½	4¾	4¾	5⅞	6⅞	12¾	7⅞	5½	2¾	8⅞	25	8½	½	7/8	5	152 lbs.
mm	445	110	127	147	175	322	180	140	60	218	635	216	13	20	127	69 kg.



Flange Dimensions: 2.5" 125 ANSI (250 # optional)

Details	Flange	D	d	k (BCD)	n x d _L
Inch	2½	4¾	5	5½	4 x ¾
mm	65	110	126	140	4 x 19

Baldor Motor Information

Hp/kw	Volt	Phase	FLA
15 Hp (11.25 kw)	208-230/460/575	3	37.5-34/17/13.5
10 Hp (7.5 kw)	208-230/460/575	3	25-23/11.5/9.2
7.5 Hp (5.75 kw)	208-230/460/575	3	18-17.2/8.6/7

WILO USA LLC
1290 N 25th Ave
Melrose Park, IL 60160
Tel: (866) 945-6872
Fax: (708) 338-9455

www.WILO-USA.com

WILO Canada Inc.
Bay 7-2915 10th Ave. NE
Calgary, Alberta T2A 5L4
Tel: (866) 945-6236
Fax: (403) 277-9456

www.WILO-CANADA.com



WILO IL Submittal

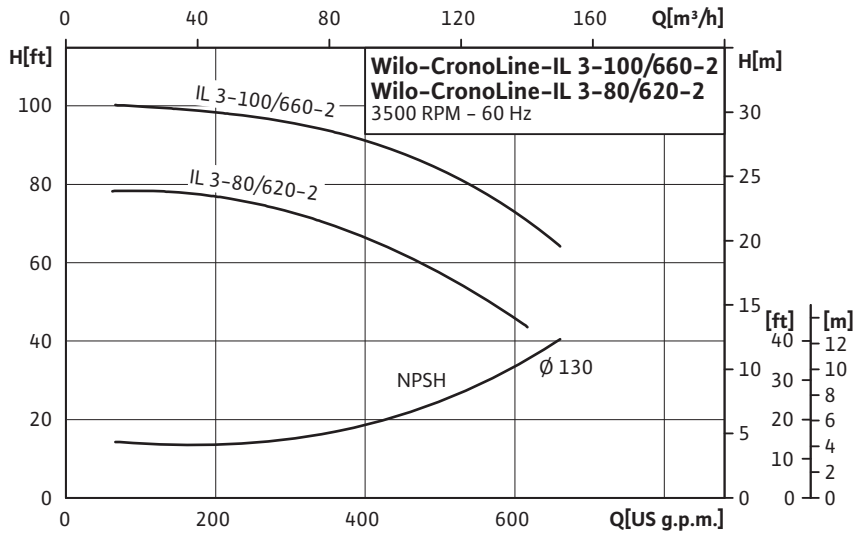
IL 3-100/660-2 & IL 3-80/620-2



Pumpen Intelligenz.

Project:	
Engineer:	
Contractor:	
Submitted By:	Date:
Approved By:	Date:

Tag #	Model #	Flow	Head	Hp	Volt/Phase	Motor Enclosure	RPM
	IL 3-100/660-2			15			3450 (2 pole)
	IL 3-80/620-2			10			3450 (2 pole)

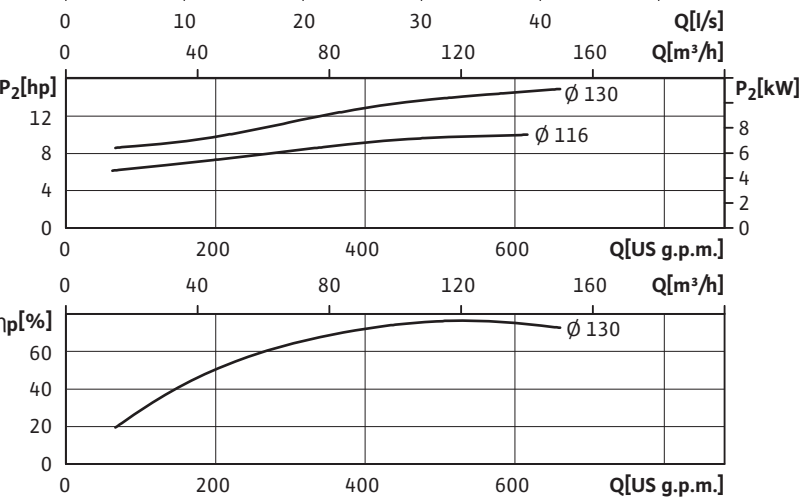


Applications

- Max Temp: 20°F to 250°F (-4°C to 120°C)
- 285°F (140°C) optional seal
- Max Ambient Temp: 104°F (40°C)
- Max Working Press: 175 PSI (12 Bar)
- 250 PSI (17 Bar) on request
- Fluids: Water or Water/Glycol up to 50%
- Other Fluids - Contact WILO

Materials of Construction

- Impeller: Cast Bronze
- Cast Iron (optional)
- Shaft: 316L Stainless Steel
- Volute: Cast Iron (Cataphoresis Coated)
- Seal (Std): Silicon Carbide on Silicon Carbide
- HNBR Elastomer
- CrNiMo Spring



WILO USA LLC
 1290 N 25th Ave
 Melrose Park, IL 60160
 Tel: (866) 945-6872
 Fax: (708) 338-9455

www.WILO-USA.com

WILO Canada Inc.
 Bay 7-2915 10th Ave. NE
 Calgary, Alberta T2A 5L4
 Tel: (866) 945-6236
 Fax: (403) 277-9456

www.WILO-CANADA.com



WILO IL Submittal

IL 3-100/660-2 & IL 3-80/620-2



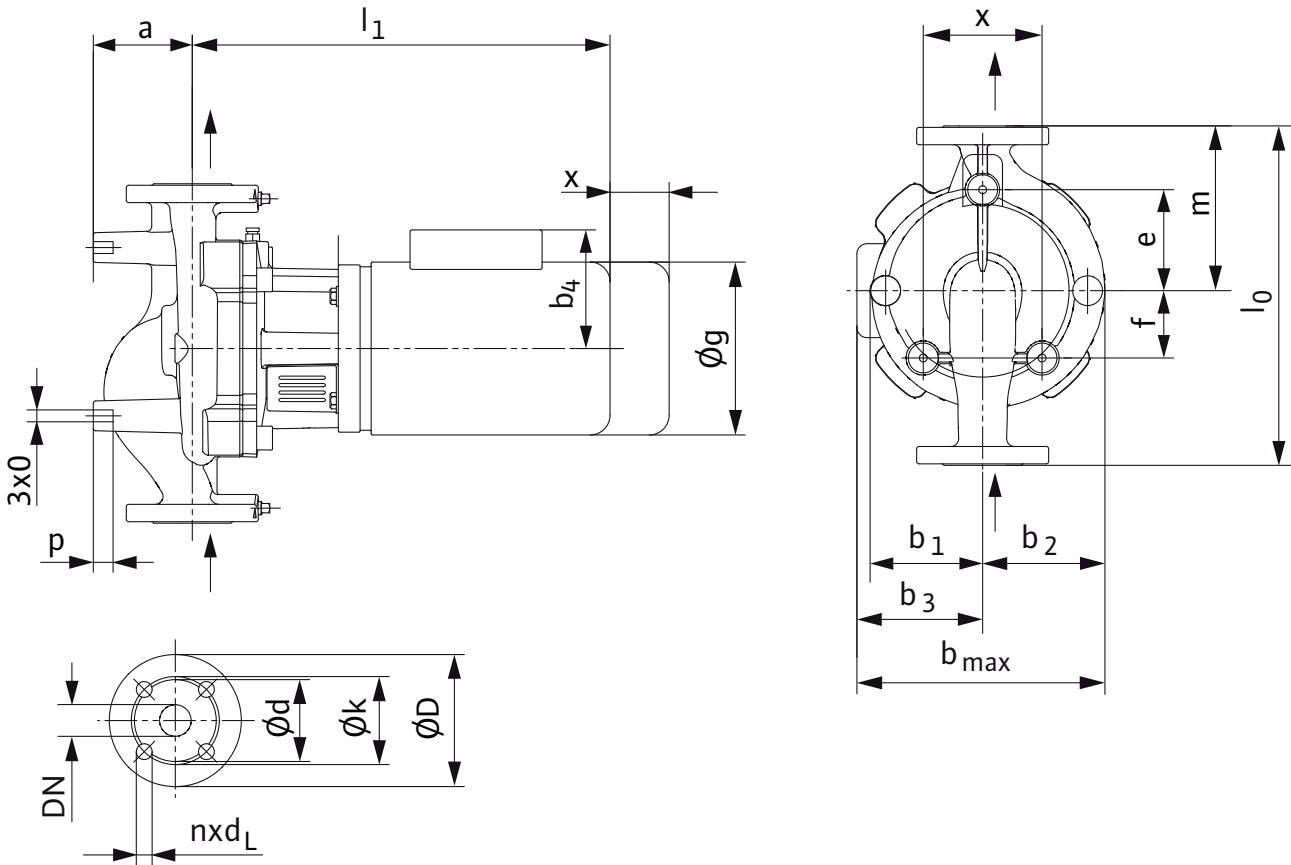
Pumpen Intelligenz.

Pump Dimensions for: IL 3-100/660-2

	l_0	a	b_1	b_2	b_3	b_{max}	c	e	f	g	l_1	m	o	p	x	Wt max
Inch	17½	4¼	4⅞	6	8	13⅞	7⅞	5½	2¼	10¼	26⅜	8¾	½	7/8	5	238 lbs.
mm	445	109	123	151	201	352	180	140	57	259	669	220	13	20	127	108 kg.

Pump Dimensions for: IL 3-80/620-2

	l_0	a	b_1	b_2	b_3	b_{max}	c	e	f	g	l_1	m	o	p	x	Wt max
Inch	17½	4¼	4⅞	6	8	13⅞	7⅞	5½	2¼	10¼	25⅜	8¾	½	7/8	5	231 lbs.
mm	445	109	123	151	201	352	180	140	57	259	643	220	13	20	127	105 kg.



Flange Dimensions: 3" 125 ANSI (250 # optional)

Details	Flange	D	d	k (BCD)	n x d _L
Inch	3	8¼	5¾	6	4 x ¾
mm	80	210	145	152	4 x 19

Baldor Motor Information

Hp/kw	Volt	Phase	FLA
15 Hp (11.25 kw)	208-230/460/575	3	37.5-34/17/13.5
10 Hp (7.5 kw)	208-230/460/575	3	25-23/11.5/9.2

WILO USA LLC
1290 N 25th Ave
Melrose Park, IL 60160
Tel: (866) 945-6872
Fax: (708) 338-9455

www.WILO-USA.com

WILO Canada Inc.
Bay 7-2915 10th Ave. NE
Calgary, Alberta T2A 5L4
Tel: (866) 945-6236
Fax: (403) 277-9456

www.WILO-CANADA.com



WILO IL Submittal

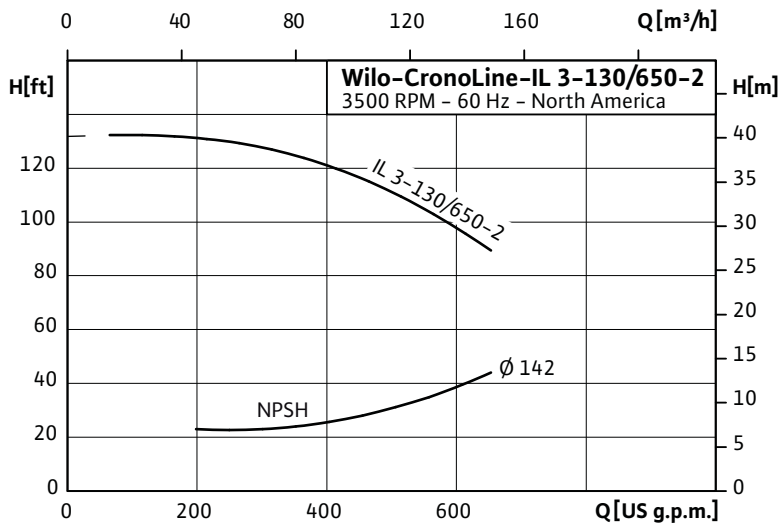
IL 3-130/650-2



Pumpen Intelligenz.

Project:	
Engineer:	
Contractor:	
Submitted By:	Date:
Approved By:	Date:

Tag #	Model #	Flow	Head	Hp	Volt/Phase	Motor Enclosure	RPM
	IL 3-130/650-2			20			3450 (2 pole)

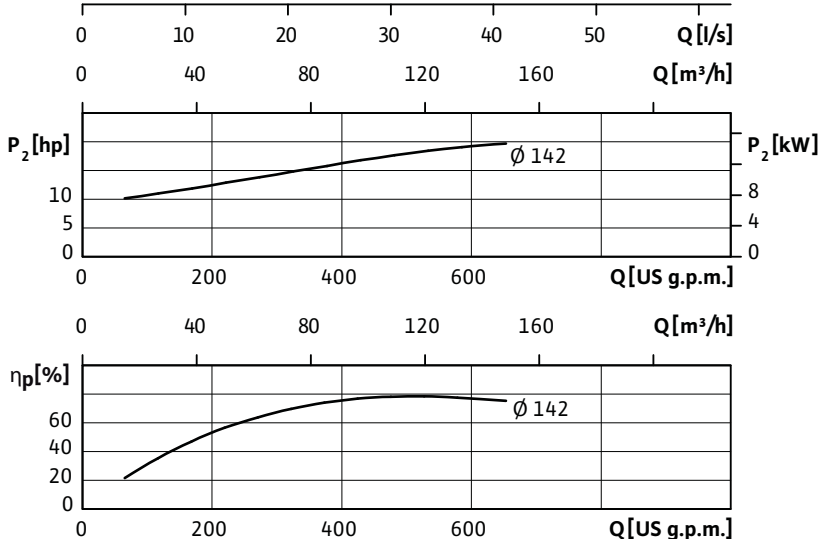
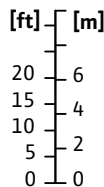


Applications

- Max Temp: 20°F to 250°F (-4°C to 120°C)
- 285°F (140°C) optional seal
- Max Ambient Temp: 104°F (40°C)
- Max Working Press: 175 PSI (12 Bar)
- 250 PSI (17 Bar) on request
- Fluids: Water or Water/Glycol up to 50%
- Other Fluids - Contact WILO

Materials of Construction

- Impeller: Cast Bronze
- Cast Iron (optional)
- Shaft: 316L Stainless Steel
- Volute: Cast Iron (Cataphoresis Coated)
- Seal (Std): Silicon Carbide on Silicon Carbide
- HNBR Elastomer
- CrNiMo Spring



Approval Stamp Here

WILO USA LLC
1290 N 25th Ave
Melrose Park, IL 60160
Tel: (866) 945-6872
Fax: (708) 338-9455

www.WILO-USA.com

WILO Canada Inc.
Bay 7-2915 10th Ave. NE
Calgary, Alberta T2A 5L4
Tel: (866) 945-6236
Fax: (403) 277-9456

www.WILO-CANADA.com



WILO IL Submittal

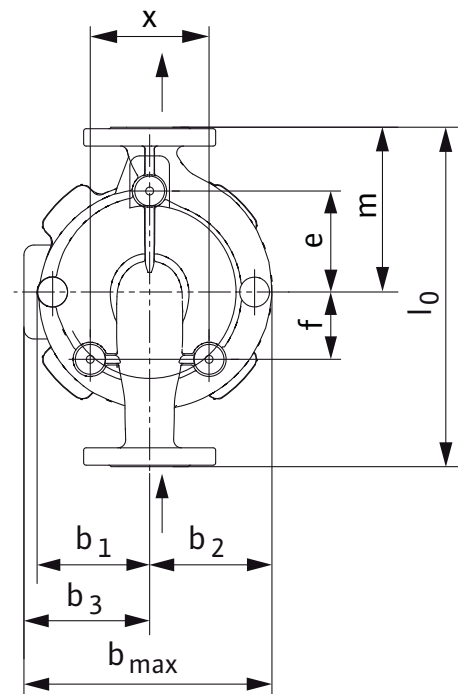
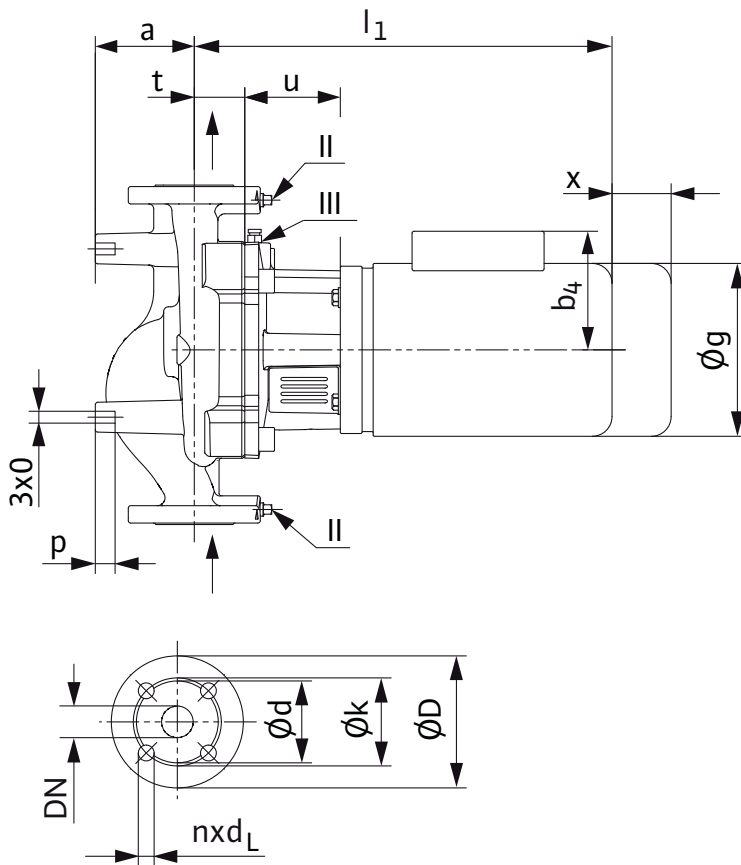
IL 3-130/650-2



Pumpen Intelligenz.

Pump Dimensions for: IL 3-130/650-2

	l_0	a	b_1	b_2	b_3	b_{max}	c	e	f	g	l_1	m	o	p	x	Wt_{max}
Inch	19	4 ⁷ / ₈	5 ³ / ₈	6 ³ / ₈	8 ¹ / ₄	14 ⁵ / ₈	7 ¹ / ₈	5 ¹ / ₈	2 ⁷ / ₈	10 ¹ / ₄	26	8 ⁵ / ₈	1/2	7/8	5	282 lbs.
mm	483	123	136	162	207	369	180	128	72	259	660	218	13	20	127	128 kg.



Flange Dimensions: 3" 125 ANSI (250 # optional)

Details	Flange	D	d	k (BCD)	n x d _L
Inch	3	8 ¹ / ₄	5 ³ / ₄	6	4 x 3/4
mm	80	210	145	152	4 x 19

Baldor Motor Information

Hp/kw	Volt	Phase	FLA
20 Hp (15 kw)	208-230/460/575	3	50.1-46/23/18.5

WILO USA LLC
1290 N 25th Ave
Melrose Park, IL 60160
Tel: (866) 945-6872
Fax: (708) 338-9455

www.WILO-USA.com

WILO Canada Inc.
Bay 7-2915 10th Ave. NE
Calgary, Alberta T2A 5L4
Tel: (866) 945-6236
Fax: (403) 277-9456

www.WILO-CANADA.com



WILO IL Submittal

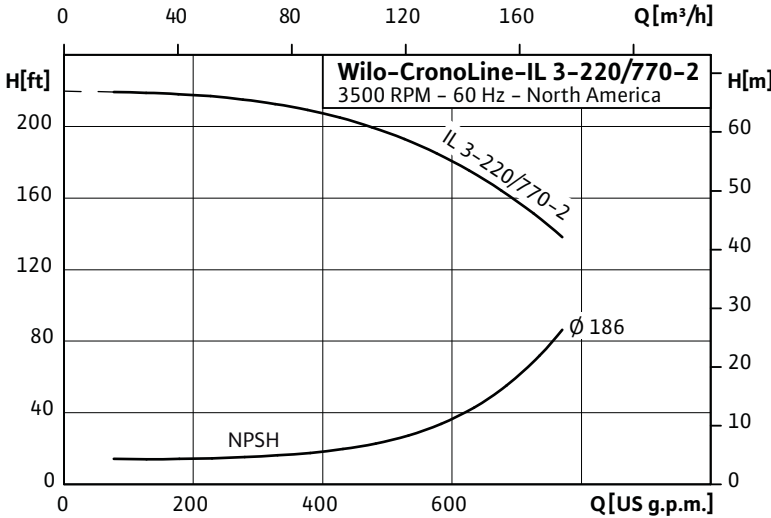
IL 3-220/770-2



Pumpen Intelligenz.

Project:	
Engineer:	
Contractor:	
Submitted By:	Date:
Approved By:	Date:

Tag #	Model #	Flow	Head	Hp	Volt/Phase	Motor Enclosure	RPM
	IL 3-220/770-2			40			3450 (2 pole)

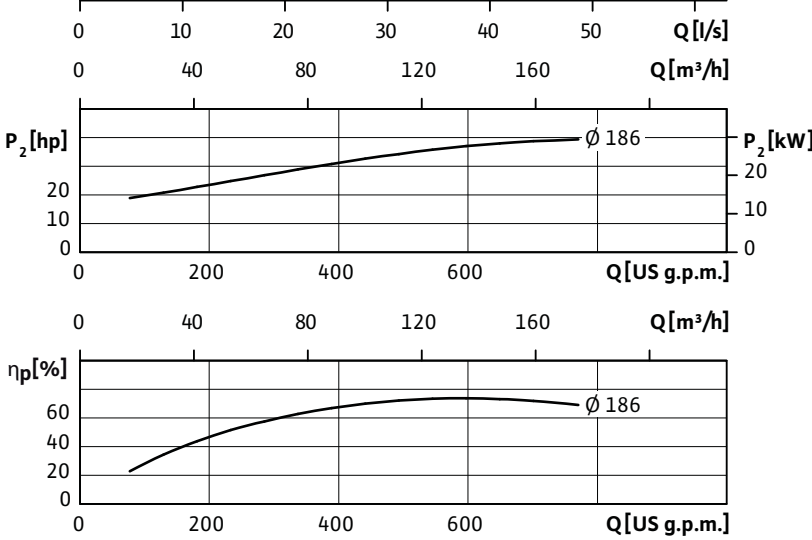


Applications

- Max Temp: 20°F to 250°F (-4°C to 120°C)
- 285°F (140°C) optional seal
- Max Ambient Temp: 104°F (40°C)
- Max Working Press: 175 PSI (12 Bar)
- 250 PSI (17 Bar) on request
- Fluids: Water or Water/Glycol up to 50%
- Other Fluids - Contact WILO

Materials of Construction

- Impeller: Cast Bronze
- Cast Iron (optional)
- Shaft: 316L Stainless Steel
- Volute: Cast Iron (Cataphoresis Coated)
- Seal (Std): Silicon Carbide on Silicon Carbide
- HNBR Elastomer
- CrNiMo Spring



Approval Stamp Here

WILO USA LLC
1290 N 25th Ave
Melrose Park, IL 60160
Tel: (866) 945-6872
Fax: (708) 338-9455 www.WILO-USA.com

WILO Canada Inc.
Bay 7-2915 10th Ave. NE
Calgary, Alberta T2A 5L4
Tel: (866) 945-6236
www.WILO-CANADA.com Fax: (403) 277-9456



WILO IL Submittal

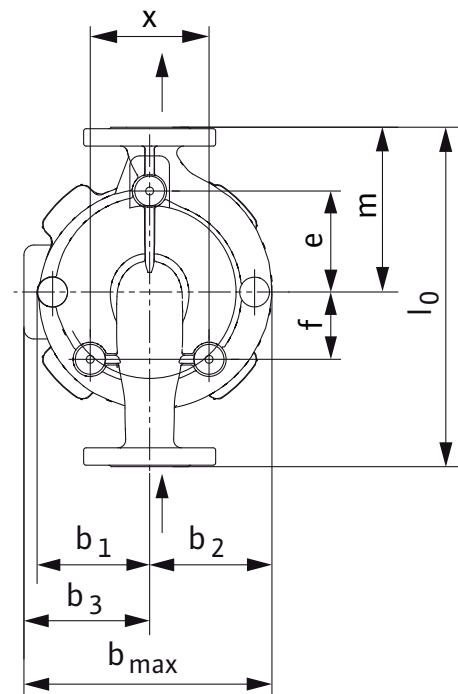
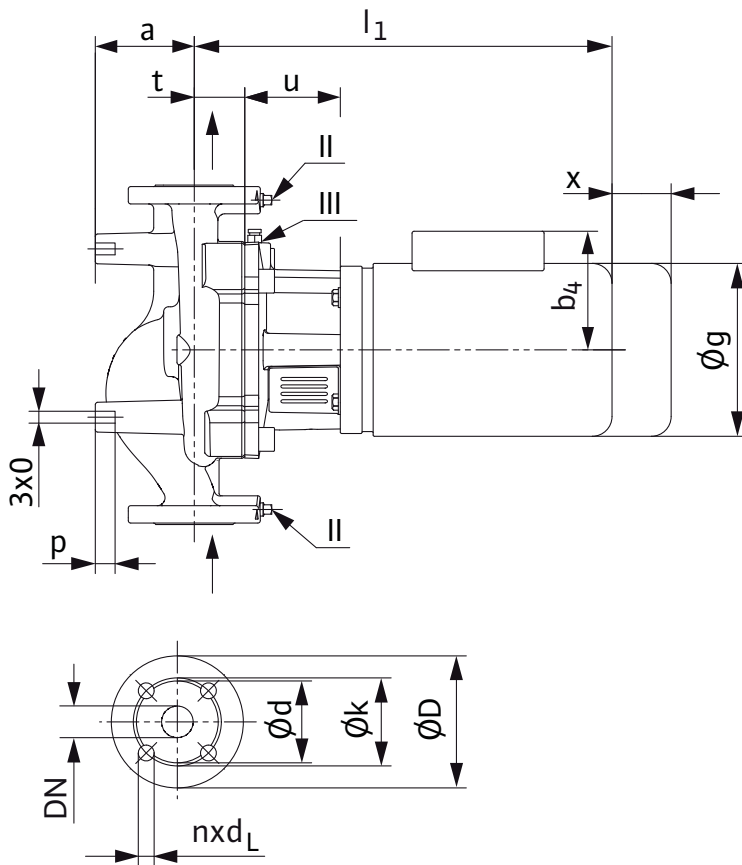
IL 3-220/770-2



Pumpen Intelligenz.

Pump Dimensions for: IL 3-220/770-2

	l_0	a	b_1	b_2	b_3	b_{max}	c	e	f	g	l_1	m	o	p	x	Wt_{max}
Inch	21	5 $\frac{3}{4}$	5 $\frac{3}{8}$	6 $\frac{1}{4}$	11 $\frac{1}{4}$	8 $\frac{3}{8}$	8 $\frac{3}{4}$	6 $\frac{3}{4}$	2 $\frac{1}{2}$	11 $\frac{5}{8}$	30 $\frac{3}{8}$	9 $\frac{3}{4}$	$\frac{1}{2}$	$\frac{7}{8}$	5	443 lbs.
mm	533	145	157	182	285	467	220	170	62	293	772	246	13	20	127	201 kg.



Flange Dimensions: 3" 125 ANSI (250 # optional)

Details	Flange	D	d	k (BCD)	n x d _L
Inch	3	8 $\frac{1}{4}$	5 $\frac{3}{4}$	6	4 x $\frac{3}{4}$
mm	80	210	145	152	4 x 19

Baldor Motor Information

Hp/kw	Volt	Phase	FLA
40 Hp (30 kw)	208-230/460/575	3	90/45/36

WILO USA LLC
1290 N 25th Ave
Melrose Park, IL 60160
Tel: (866) 945-6872
Fax: (708) 338-9455

www.WILO-USA.com

WILO Canada Inc.
Bay 7-2915 10th Ave. NE
Calgary, Alberta T2A 5L4
Tel: (866) 945-6236
Fax: (403) 277-9456

www.WILO-CANADA.com



WILO IL Submittal

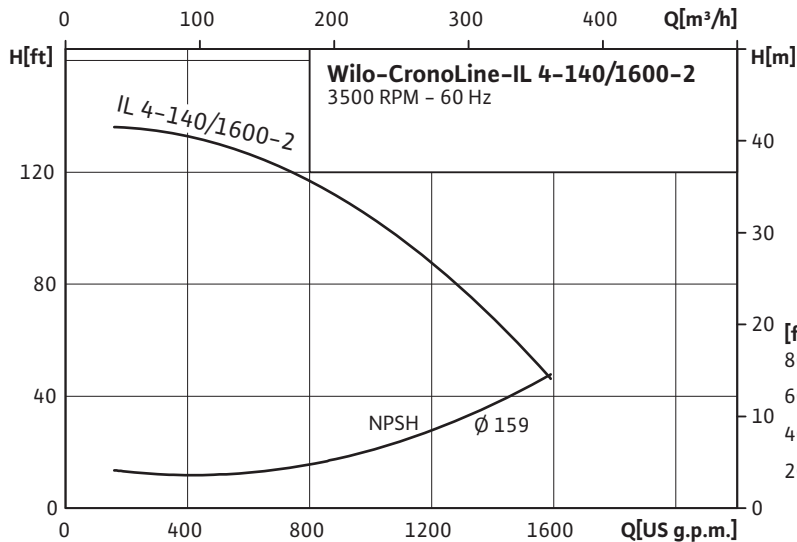
IL 4-140/1600-2



Pumpen Intelligenz.

Project:	
Engineer:	
Contractor:	
Submitted By:	Date:
Approved By:	Date:

Tag #	Model #	Flow	Head	Hp	Volt/Phase	Motor Enclosure	RPM
	IL 4-140/1600-2			40			3450 (2 pole)

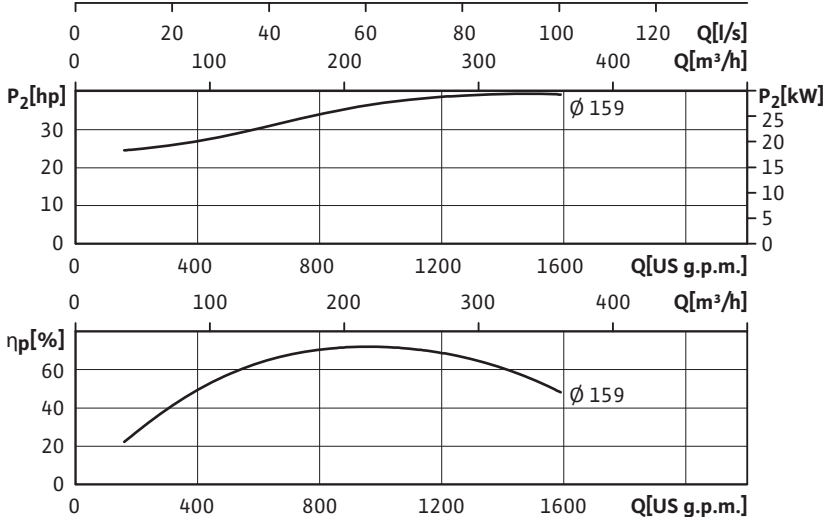


Applications

- Max Temp: 20°F to 250°F (-4°C to 120°C)
285°F (140°C) optional seal
- Max Ambient Temp: 104°F (40°C)
- Max Working Press: 175 PSI (12 Bar)
250 PSI (17 Bar) on request
- Fluids: Water or Water/Glycol up to 50%
Other Fluids - Contact WILO

Materials of Construction

- Impeller: Cast Bronze
Cast Iron (optional)
- Shaft: 316L Stainless Steel
- Volute: Cast Iron (Cataphoresis Coated)
- Seal (Std): Silicon Carbide on Silicon Carbide
HNBR Elastomer
CrNiMo Spring



Approval Stamp Here

WILO USA LLC
1290 N 25th Ave
Melrose Park, IL 60160
Tel: (866) 945-6872
Fax: (708) 338-9455
www.WILO-USA.com

WILO Canada Inc.
Bay 7-2915 10th Ave. NE
Calgary, Alberta T2A 5L4
Tel: (866) 945-6236
Fax: (403) 277-9456
www.WILO-CANADA.com



WILO IL Submittal

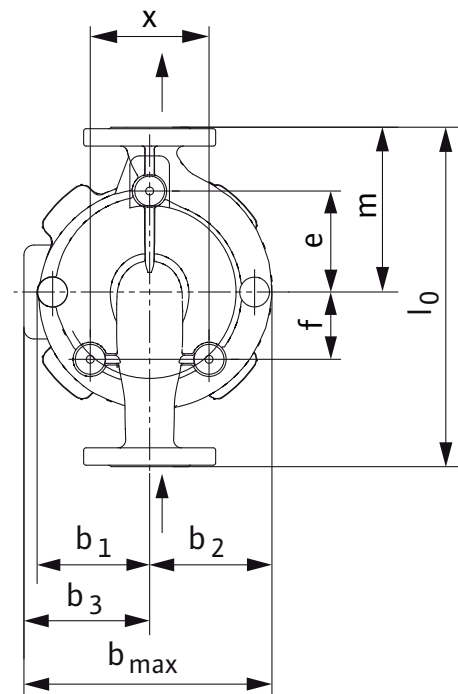
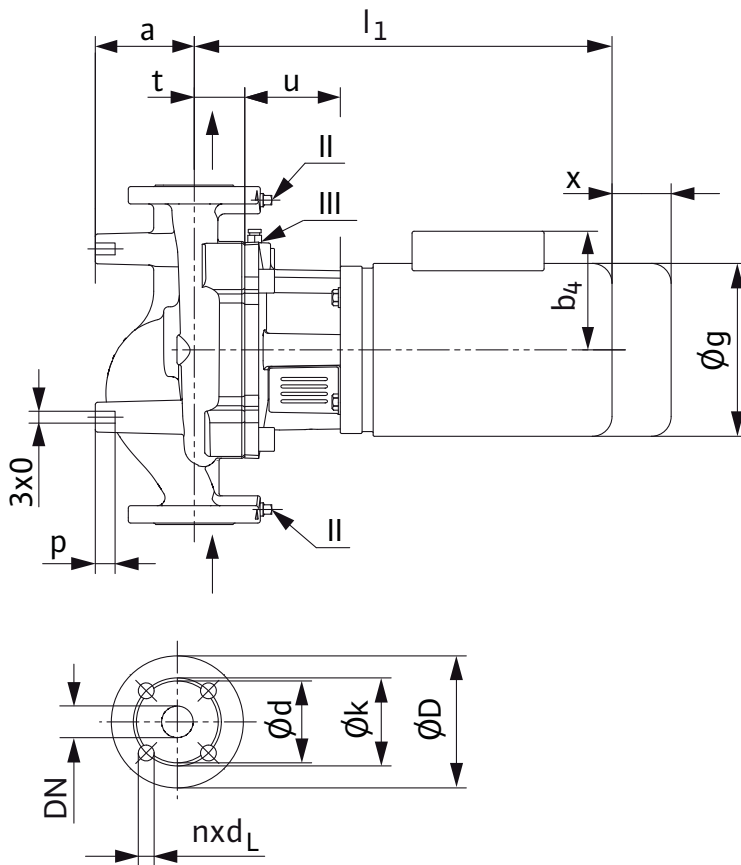
IL 4-140/1600-2



Pumpen Intelligenz.

Pump Dimensions for: IL 4-140/1600-2

	l_0	a	b_1	b_2	b_3	b_{max}	c	e	f	g	l_1	m	o	p	x	Wt_{max}
Inch	20½	5¼	6¼	7¾	11¼	19	7⅞	9¼	2⅜	9⅝	31¾	10⅜	½	⅞	6	448 lbs.
mm	521	132	158	196	285	481	200	234	60	293	805	262	13	20	152	203 kg.



Flange Dimensions: 4" 125 ANSI (250 # optional)

Details	Flange	D	d	k (BCD)	n x d _L
Inch	4	10	7	7½	8 x ¾
mm	100	254	176	191	8 x 19

Baldor Motor Information

Hp/kw	Volt	Phase	FLA
40 Hp (30 kw)	208-230/460/575	3	90/45/36

WILO USA LLC
1290 N 25th Ave
Melrose Park, IL 60160
Tel: (866) 945-6872
Fax: (708) 338-9455

www.WILO-USA.com

WILO Canada Inc.
Bay 7-2915 10th Ave. NE
Calgary, Alberta T2A 5L4
Tel: (866) 945-6236
Fax: (403) 277-9456

www.WILO-CANADA.com



WILO IL Submittal

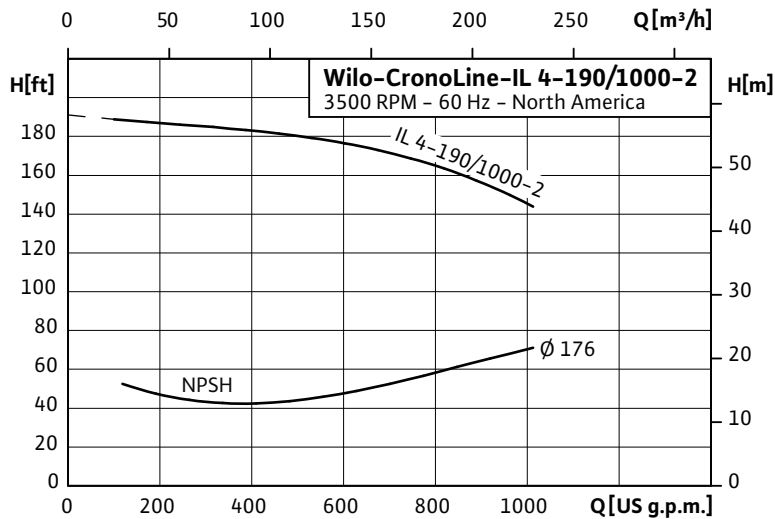
IL 4-190/1000-2



Pumpen Intelligenz.

Project:	
Engineer:	
Contractor:	
Submitted By:	Date:
Approved By:	Date:

Tag #	Model #	Flow	Head	Hp	Volt/Phase	Motor Enclosure	RPM
	IL 4-190/1000-2			50			3450 (2 pole)

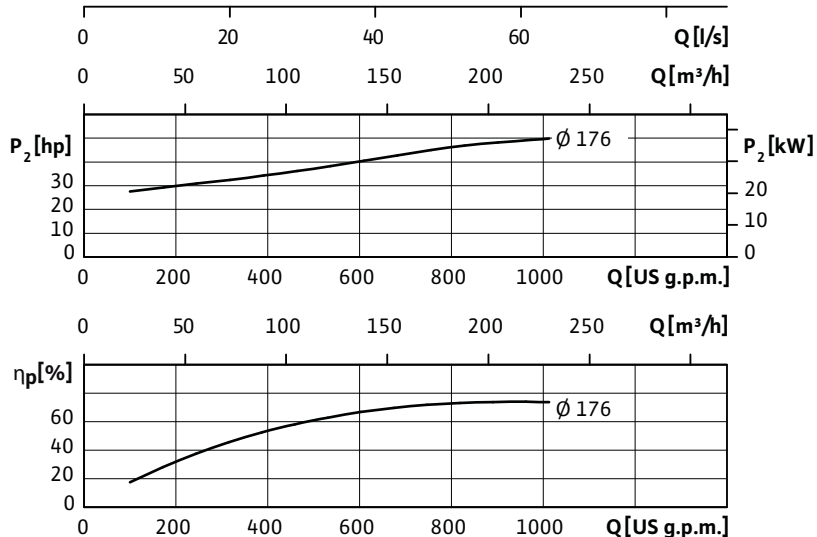


Applications

- Max Temp: 20°F to 250°F (-4°C to 120°C)
- 285°F (140°C) optional seal
- Max Ambient Temp: 104°F (40°C)
- Max Working Press: 175 PSI (12 Bar)
- 250 PSI (17 Bar) on request
- Fluids: Water or Water/Glycol up to 50%
- Other Fluids - Contact WILO

Materials of Construction

- Impeller: Cast Bronze
- Cast Iron (optional)
- Shaft: 316L Stainless Steel
- Volute: Cast Iron (Cataphoresis Coated)
- Seal (Std): Silicon Carbide on Silicon Carbide
- HNBR Elastomer
- CrNiMo Spring



Approval Stamp Here

WILO USA LLC
1290 N 25th Ave
Melrose Park, IL 60160
Tel: (866) 945-6872
Fax: (708) 338-9455 www.WILO-USA.com

WILO Canada Inc.
Bay 7-2915 10th Ave. NE
Calgary, Alberta T2A 5L4
Tel: (866) 945-6236
www.WILO-CANADA.com Fax: (403) 277-9456



WILO IL Submittal

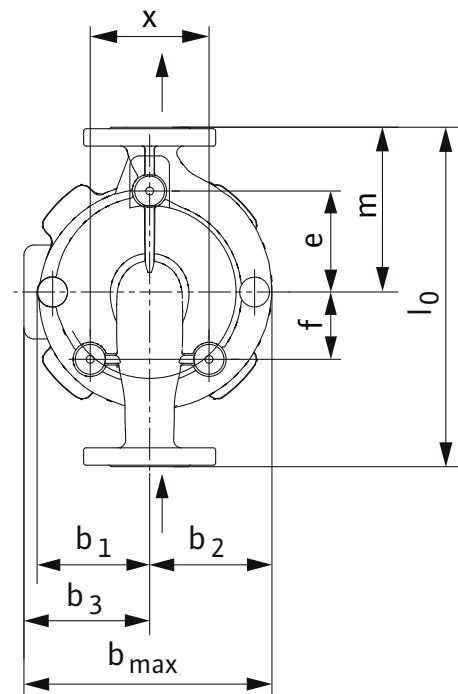
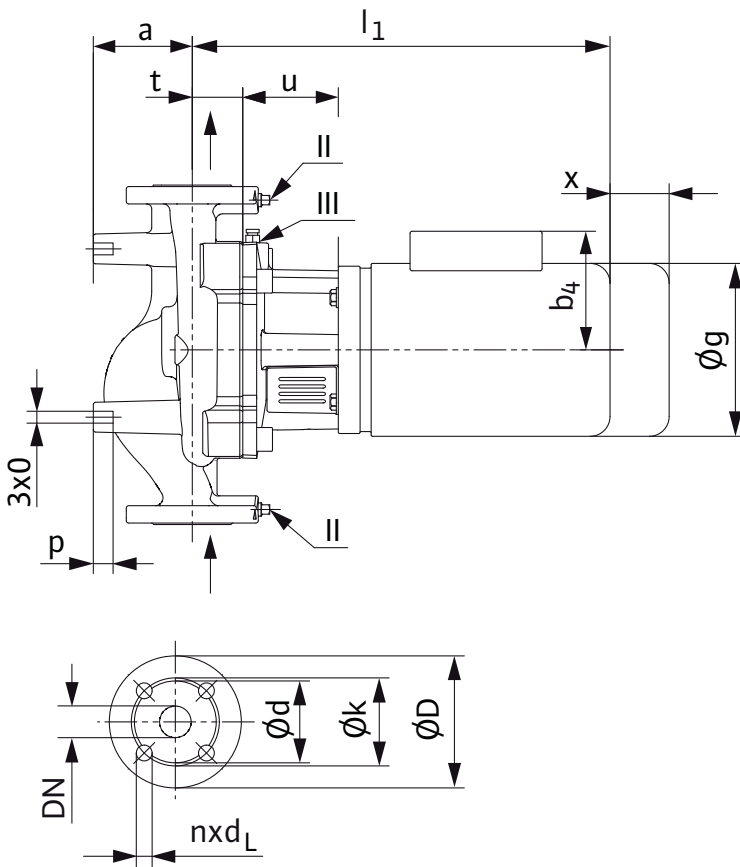
IL 4-190/1000-2



Pumpen Intelligenz.

Pump Dimensions for: IL 4-190/1000-2

	l_0	a	b_1	b_2	b_3	b_{max}	c	e	f	g	l_1	m	o	p	x	Wt_{max}
Inch	22	6 $\frac{1}{8}$	6 $\frac{7}{8}$	8	12 $\frac{1}{4}$	20 $\frac{1}{4}$	8 $\frac{3}{4}$	9 $\frac{1}{4}$	3 $\frac{7}{8}$	-	34 $\frac{7}{8}$	10 $\frac{1}{4}$	$\frac{1}{2}$	$\frac{7}{8}$	5	604 lbs.
mm	559	155	173	202	310	512	220	233	99	-	884	260	13	20	127	274 kg.



Flange Dimensions: 4" 125 ANSI (250 # optional)

Details	Flange	D	d	k (BCD)	n x d _L
Inch	4	10	7	7 $\frac{1}{2}$	8 x $\frac{3}{4}$
mm	100	254	176	191	8 x 19

Baldor Motor Information

Hp/kw	Volt	Phase	FLA
50 Hp (37.5 kw)	208-230/460/575	3	112/56/45

WILO USA LLC
 1290 N 25th Ave
 Melrose Park, IL 60160
 Tel: (866) 945-6872
 Fax: (708) 338-9455

www.WILO-USA.com

WILO Canada Inc.
 Bay 7-2915 10th Ave. NE
 Calgary, Alberta T2A 5L4
 Tel: (866) 945-6236
 Fax: (403) 277-9456

www.WILO-CANADA.com