

SPECIFICATIONS

1. 3" inlet/outlets Sch. 40. Plain End (No-Hub)
2. Max flow rate: 35 GPM
3. Liquid capacity: 35 Gallons
4. Max grease capacity: 142 lbs. (20 Gallons)
5. Max solids/sediment capacity: 9.5 Gallons
6. Unit weight w/std. covers: 77 lbs.
7. 2,000 lb. load rated, bolted, gas/water tight composite cover.
8. Maximum operating temperature 190°F continuous.
9. Seamless molded polyethylene tank.

NOTES

1. Listed by IAPMO to ASME grease interceptor standard #A112.14.3 and CSA B481.1.
2. Factory installed Built-in flow control.
3. For gravity drainage applications only. Do not use for pressure applications.
4. Seamless high density polyethylene tank.
5. Unit supplied with built-in adapter for tank up to 3 1/2" of adjustability. Additional riser(s) are also available for deeper burial depth.
6. Cover placement allows full access to tank for proper maintenance.
7. Vent not required unless per local code.
8. Engineered inlet and outlet diffusers are removable to inspect/clean piping.
9. For on-the-floor or buried applications.
10. Integral air relief / Anti-siphon.
11. Three outlet options for easy rough in. Unit shipped with outlet diffuser in outlet "B".

DIFFUSION FLOW TECHNOLOGY

The inlet diffuser splits incoming effluent into two paths that utilize the entire liquid volume of the tank for efficient grease separation. The calibrated openings greatly reduce effluent turbulence. The effluent enters the main chamber without disturbing the existing grease or sediment layers.

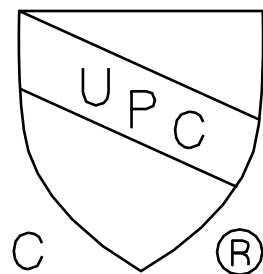
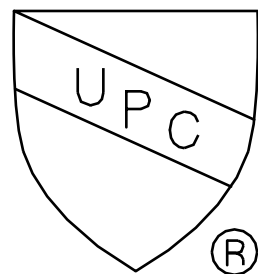
The integral air relief/anti-siphon in the top of the outlet diffuser allows pressure stabilization within the unit during operation. The bottom of the outlet diffuser allows only effluent which is free of grease to exit the tank. It can easily be attached to any of the three outlets provided to ease jobsite piping layouts.

ENGINEER SPECIFICATION GUIDE

Schier Great Basin™ grease interceptor model # GB-35 shall be lifetime guaranteed and made in USA of seamless, rotationally-molded High Density Polyethylene. Interceptor shall be furnished for above or below grade installation. Interceptor shall be certified to ASME A112.14.3 (type C) and CSA B481.1, with field adjustable riser system, built-in flow control, built-in test caps and three outlet options. Interceptor flow rate shall be 35 GPM. Interceptor grease capacity shall be 142 lbs. Cover shall provide water/gas-tight seal and have minimum 2,000 lbs load capacity.

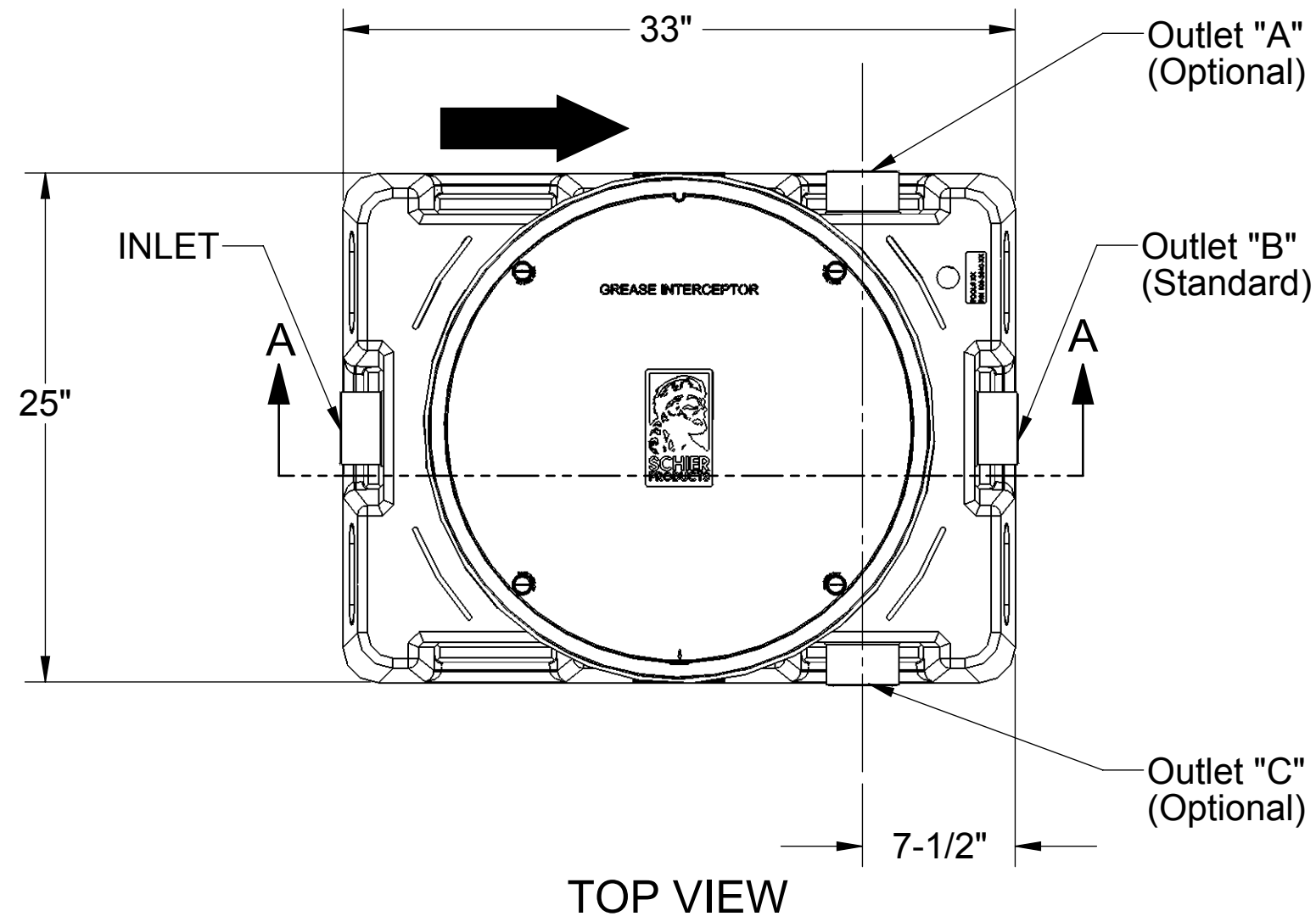
OPTIONS:

- Teleglide field adjustable risers for extending covers to grade
- Male pipe thread connections
- 2" Plain end or male pipe thread connections
- 4" Plain end or male pipe thread connections
- Clamping collar kit

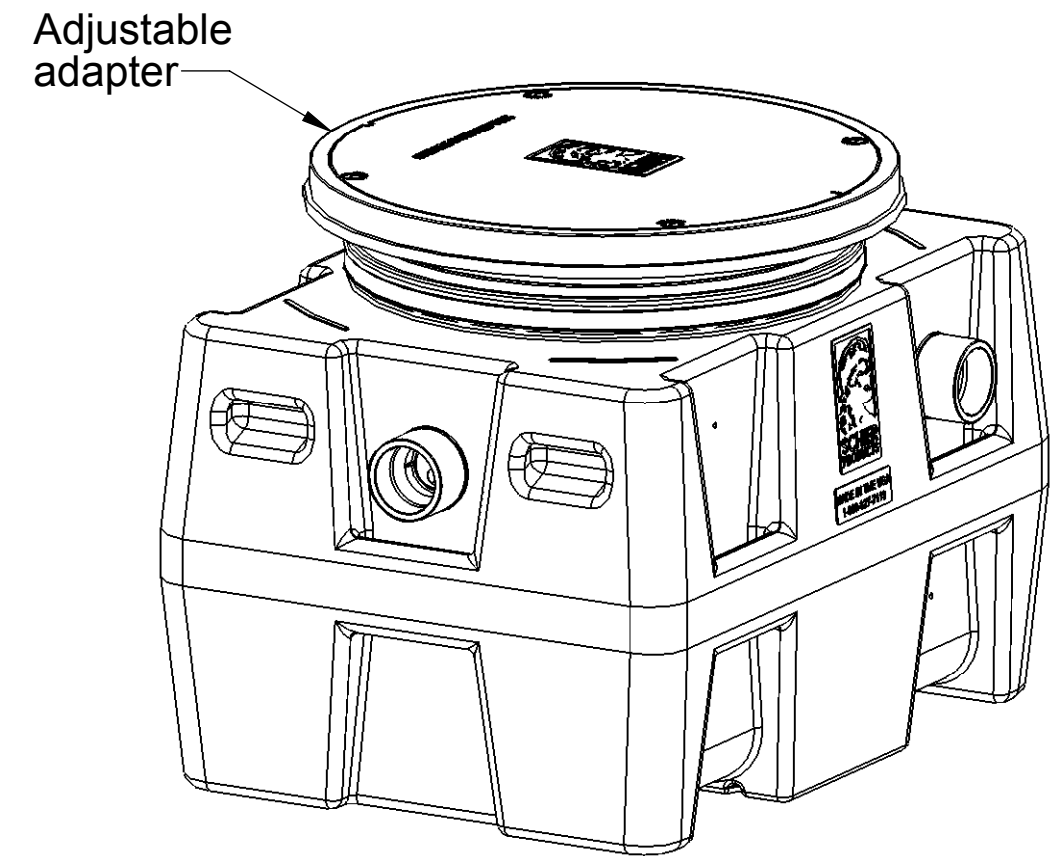


PROPRIETARY AND CONFIDENTIAL

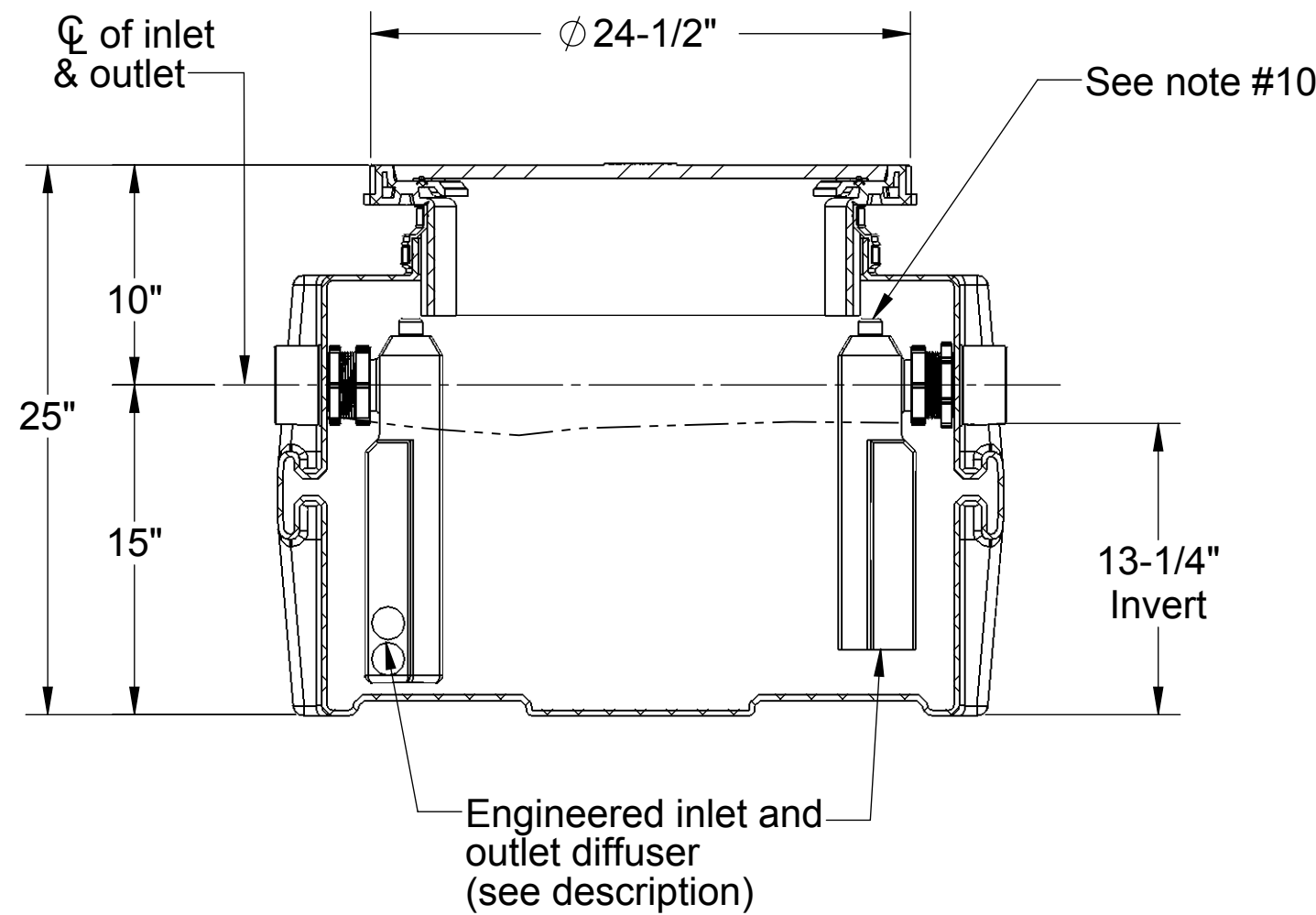
THE INFORMATION CONTAINED IN THIS DRAWING IS THE SOLE PROPERTY OF SCHIER PRODUCTS. ANY REPRODUCTION IN PART OR AS A WHOLE WITHOUT THE WRITTEN PERMISSION OF SCHIER PRODUCTS IS PROHIBITED.



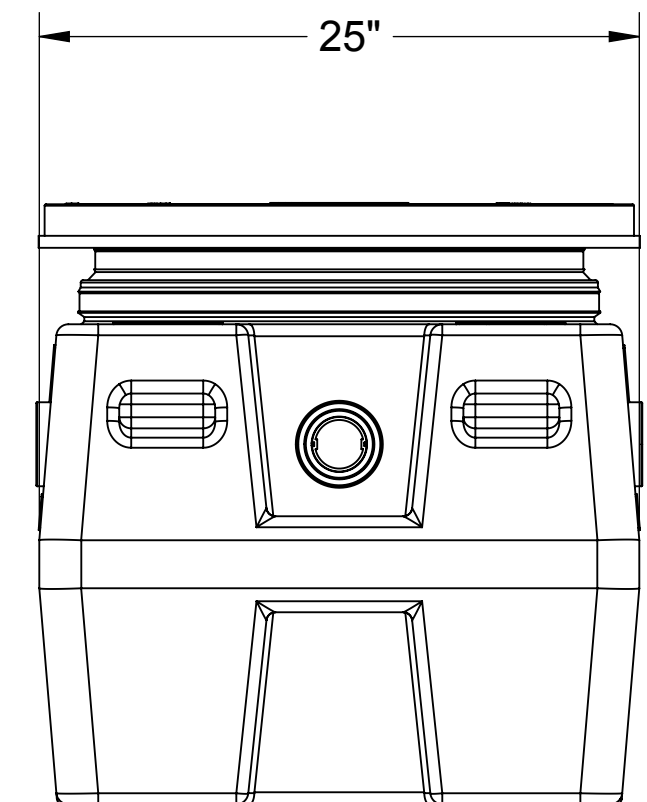
TOP VIEW



ISOMETRIC VIEW



SECTION "A-A"



OUTLET END VIEW

MODEL NUMBER: GB-35 PART NUMBER: 4020-001-XX

DESCRIPTION:
35 GPM POLYETHYLENE GREASE INTERCEPTOR

DWG BY: N.EBERT DATE: 11/25/2013 REV: 2 ECO: 1035

SPECIFICATION SHEET

Schier Products
9500 Woodend Road
Edwardsville, KS 66111
Tel: 800-827-7119
Fax: 800-827-9664
www.schierproducts.com

Made in the U.S.A

