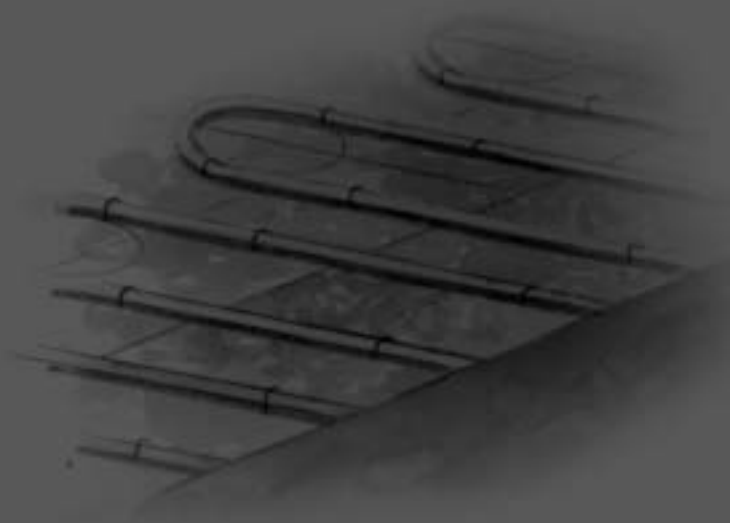


Uponor Logic for Radiant Floor Heating and Cooling is the ultimate in comfort control.



- Comfort
- Efficiency
- Advanced control systems
- Industry pioneer
- Proven
- Peace of mind

Uponor Radiant Heating and Cooling Systems

New and Innovative Solutions for Complete Radiant Systems

Uponor Multifunction Climate Cöntrol™ System

Simple, intelligent and very intuitive, the Multifunction Climate Cöntrol was designed with Uponor Logic to do everything better. It replaces all six of our previous pro Series models, and is made to run multiple proPANEL® pumping and mixing units with incredible ease.

Now multiple functionalities, like boiler staging, domestic hot water control, mixing, snow melt and zone pumping are controlled from one interface. It's one box, with one wiring schematic, one setup and one easy, plug-and-play way to install.

- Increases functionality without adding cost
- Eliminates the need for multiple controls
- Fewer replacement parts
- Fully programmable with multiple built-in functions
- Simple and easy Cat5 connections and wires



- Simple plug-and-play connections, eliminating wiring confusion
- Low-voltage platform (24V)
- One controller can control multiple proPANEL units, decreasing product and installation costs
- Easy to learn and operate
- Intuitive five-button interface for easy setup and viewing

Uponor proPANEL Pumping and Mixing Panels

Designed specifically to work with the Multifunction Climate Cöntrol, the new proPANEL products are an innovative pumping and mixing units that only require four models to cover countless applications.

Prewired and fully assembled, this modular design allows multiple proPANEL units to be connected to one Multifunction Climate Cöntrol to provide flexible options for unique jobs.

- More options for less money than previous models
- Updated hardware and circulators
- Modular, for use with other proPANEL models for additional heating needs
- Quick one-person installation
- Increases functionality without increasing cost
- Small, compact design



- Eliminates multiple controls
- Easy wiring configuration; no confusion
- Purge capability and pump isolation included
- Less connections means less risk of leaks
- Decreased installation time and setup costs
- Quick and simple connection to Multifunction Climate Cöntrol hydronic controller

Uponor Radiant Heating and Cooling Systems

Barrier Tubing

Heat-transfer tubing for closed-loop hydronic heating and cooling applications with an EVOH oxygen diffusion barrier that meets the German DIN Standard 4726. Wirsbo hePEX™ plus tubing is compatible with Uponor's ProPEX™ and QS-style fittings and is manufactured to ASTM F876 and F877. Tubing is rated and listed by the Hydrostatic Stress Board of PPI at: 200°F at 80 psi, 180°F at 100 psi and 73.4°F at 160 psi.

Wirsbo hePEX™ Tubing, Coils



Part No.	Part Description	Coils/Pallet
A1180313	5/16" Wirsbo hePEX, 250-ft. coil	40
A1220313	5/16" Wirsbo hePEX, 1,000-ft. coil	12
A1210375	3/8" Wirsbo hePEX, 400-ft. coil	18
A1220375	3/8" Wirsbo hePEX, 1,000-ft. coil	12
A1250500	1/2" Wirsbo hePEX, 300-ft. coil	18
A1220500	1/2" Wirsbo hePEX, 1,000-ft. coil	8
A1260500	1/2" Wirsbo hePEX, 500-ft. coil	12
A1250625	5/8" Wirsbo hePEX, 300-ft. coil	12
A1220625	5/8" Wirsbo hePEX, 1,000-ft. coil	5
A1250750	3/4" Wirsbo hePEX, 300-ft. coil	12
A1240750	3/4" Wirsbo hePEX, 500-ft. coil	8
A1251000	1" Wirsbo hePEX, 300-ft. coil	5
A1241000	1" Wirsbo hePEX, 500-ft. coil	6
A1141250	1 1/4" Wirsbo hePEX, 100-ft. coil	12
A1251250	1 1/4" Wirsbo hePEX, 300-ft. coil	8
A1141500	1 1/2" Wirsbo hePEX, 100-ft. coil	5
A1251500	1 1/2" Wirsbo hePEX, 300-ft. coil	5
A1142000	2" Wirsbo hePEX, 100-ft. coil	12
A1252000	2" Wirsbo hePEX, 300-ft. coil	6

Note: Non-standard lengths of Wirsbo hePEX tubing are also available. Call Uponor Customer Service for availability and pricing.

Part No.	Part Description	Each Qty.
A1921250	1 1/4" Wirsbo hePEX, 20-ft. straight length, 100 ft.	1
A1921500	1 1/2" Wirsbo hePEX, 20-ft. straight length, 100 ft.	1
A1922000	2" Wirsbo hePEX, 20-ft. straight length, 100 ft.	1

Wirsbo hePEX Tubing, Straight Length



Uponor Radiant Heating and Cooling Systems

Multi-layer Composite (MLC) Tubing Coil



Multi-layered (MLC) composite tubing consisting of an interior aluminum tubing lined with inner and outer layers of PEX. MLC tubing offers 100% oxygen diffusion. The stay-in-place rigid feature of the tubing works great for hydronic baseboard, radiators, unit heaters, air handlers or manifold connections.

Uponor MLC tubing is manufactured to the following standard.

- ASTM F1281 "Standard Specification for Cross-linked Polyethylene/Aluminum/Cross-linked Polyethylene (PEX-AL-PEX) Pressure Pipe"

Uponor tubing is rated and listed by the Hydrostatic Stress Board of PPI at:

- 200°F at 100 psi • 180°F at 125 psi • 140°F at 160 psi • 73°F at 200 psi

Uponor MLC tubing has the following listing: ICC.

Uponor MLC tubing is approved in the following code: IMC.

Note: MLC tubing is used in hydronic heating installations only.

Part No.	Part Description	Coils/Pallet
D1250500	½" MLC Tubing, 300-ft. coil	20
D1220500	½" MLC Tubing, 1,000-ft. coil	8
D1250625	⅝" MLC Tubing, 300-ft. coil	13
D1220625	⅝" MLC Tubing, 1,000-ft. coil	7
D1140750	¾" MLC Tubing, 100-ft. coil	14
D1250750	¾" MLC Tubing, 300-ft. coil	8
D1240750	¾" MLC Tubing, 500-ft. coil	6
D1141000	1" MLC Tubing, 100-ft. coil	10
D1251000	1" MLC Tubing, 300-ft. coil	6

High-density Polyethylene (HDPE) Tubing



High-density polyethylene (HDPE) SDR 11 tubing is used as supply and return mains for large hydronic heating applications where the system contains no ferrous corrodible components or where ferrous components are isolated from the tubing. HDPE tubing is manufactured from 3408 PE material. Tubing and fittings are connected through fusion welding.

Service pressure and temperature ratings for HDPE used to convey water or water/glycol mixtures are as follows:

- 140°F at 80 psi
- 100°F at 125 psi
- 120°F at 100 psi
- 73.4°F at 160 psi

Note: This tubing is provided only in 20-foot lengths.

Part No.	Part Description	Each Qty.
B1812000	2" x 20' HDPE Tubing (straight length)	1
B1813000	3" x 20' HDPE Tubing (straight length)	1
B1814000	4" x 20' HDPE Tubing (straight length)	1

Uponor Radiant Heating and Cooling Systems

Non-barrier Tubing

Part No.	Part Description	Coil/Pallet
F1040500	½" Uponor AquaPEX tubing, 100-ft. coil	22
F1060500	½" Uponor AquaPEX tubing, 300-ft. coil	18
F1120500	½" Uponor AquaPEX tubing, 1,000-ft. coil	8
F1060625	⅝" Uponor AquaPEX tubing, 300-ft. coil	12
F1120625	⅝" Uponor AquaPEX tubing, 1,000-ft. coil	5
F1040750	¾" Uponor AquaPEX tubing, 100-ft. coil	11
F1060750	¾" Uponor AquaPEX tubing, 300-ft. coil	12
F1100750	¾" Uponor AquaPEX tubing, 500-ft. coil	8
F1041000	1" Uponor AquaPEX tubing, 100-ft. coil	12
F1061000	1" Uponor AquaPEX tubing, 300-ft. coil	5
F1061250	1¼" Uponor AquaPEX tubing, 100-ft. coil	7
F1021250	1¼" Uponor AquaPEX tubing, 300-ft. coil	2
F1061500	1½" Uponor AquaPEX tubing, 100-ft. coil	7
F1021500	1½" Uponor AquaPEX tubing, 300-ft. coil	2
F1062000	2" Uponor AquaPEX tubing, 100-ft. coil	1
F1052000	2" Uponor AquaPEX tubing, 200-ft. coil	1
F1022000	2" Uponor AquaPEX tubing, 300-ft. coil	1

Uponor AquaPEX® Tubing Coil— White



Please see page 72 for the suitability of Uponor AquaPEX® in hydronic heating applications.

TruFLOW™ Jr. Modular Manifolds

TruFLOW™ Jr. Modular Manifold with Balancing Valves is used in conjunction with either the TruFLOW Jr. Modular Manifold with Isolation Valves or the TruFLOW Jr. Modular Valveless Manifold to complete the manifold set. The TruFLOW Jr. Modular Manifold with Balancing Valves allows manual flow balancing of the individual loops on the manifold. Manifolds are available in 2- to 4-loop configurations depending on model. The manifold body ends have threads as shown in the picture.

Maximum recommended flow to the manifold is 14 gpm.

Part No.	Item Description	Dim (Body-Outlets-Body)	Each Qty.	Pkg. Qty.
A2663212	TruFLOW Jr. Balancing Valves, 2-loop	R32-R20-R32	1	-
A2663213	TruFLOW Jr. Balancing Valves, 3-loop	R32-R20-R32	1	-
A2663214	TruFLOW Jr. Balancing Valves, 4-loop	R32-R20-R32	1	-

TruFLOW™ Jr. Manifold with Balancing Valves



Uponor Radiant Heating and Cooling Systems

TruFLOW Jr. Manifold with Isolation Valves



TruFLOW Jr. Modular Manifold with Isolation Valves is used in conjunction with either the TruFLOW Jr. Modular Manifold with Balancing Valves or the TruFLOW Jr. Modular Valveless Manifold to complete the manifold set. The TruFLOW Jr. Modular Manifold with Isolation Valves allows quick isolation of the loop by closing the valve on the manifold. Manifolds are available in 2- to 4-loop configurations depending on model. The manifold body ends have threads as shown in the picture to the left.

Maximum recommended flow to the manifold is 14 gpm.

Part No.	Item Description	Dim (Body-Outlets-Body)	Each Qty.	Pkg. Qty.
A2663222	TruFLOW Jr. Isolation Valves, 2-loop	R32-R20-R32	1	-
A2663223	TruFLOW Jr. Isolation Valves, 3-loop	R32-R20-R32	1	-
A2663224	TruFLOW Jr. Isolation Valves, 4-loop	R32-R20-R32	1	-

TruFLOW Jr. Valveless Manifold



TruFLOW Jr. Modular Valveless Manifold is used with either the TruFLOW Jr. Modular Manifold with Isolation Valves or the TruFLOW Jr. Modular Manifold with Balancing Valves to complete the manifold set. The TruFLOW Jr. Modular Valveless Manifold does not feature flow balancing or isolation capability. Manifolds are available in 2- to 4-loop configurations depending on model.

Maximum recommended flow to the manifold is 14 gpm.

Part No.	Item Description	Dim (Body-Outlets-Body)	Each Qty.	Pkg. Qty.
A2663202	TruFLOW Jr. Valveless, 2-loop	R32-R20-R32	1	-
A2663203	TruFLOW Jr. Valveless, 3-loop	R32-R20-R32	1	-
A2663204	TruFLOW Jr. Valveless, 4-loop	R32-R20-R32	1	-

TruFLOW Manifold Assemblies

TruFLOW Jr. Assembly with Balancing Valves and Valveless



The TruFLOW Jr. Assembly with Balancing Valves and Valveless manifold comes fully assembled and ready for installation. The manifold body ends have R32 unions and the loop outlets have Q520 male threads.

Maximum recommended flow to the manifold based on manifold body diameter is 14 gpm.

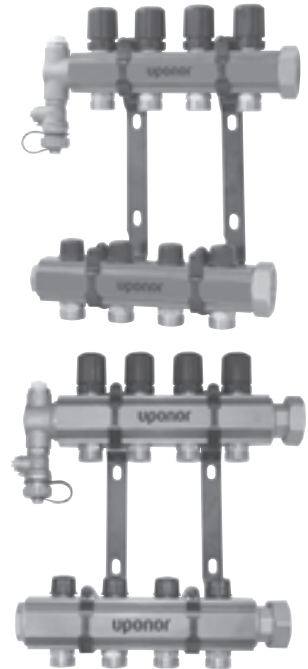
Part No.	Item Description	Dim (Body-Outlets-Body)	Each Qty.	Pkg. Qty.
A2660200	TruFLOW Jr. Assembly, Balancing Valves and Valveless, 2-loop	R32-R20-R32	1	-
A2660300	TruFLOW Jr. Assembly, Balancing Valves and Valveless, 3-loop	R32-R20-R32	1	-
A2660400	TruFLOW Jr. Assembly, Balancing Valves and Valveless, 4-loop	R32-R20-R32	1	-
A2660500	TruFLOW Jr. Assembly, Balancing Valves and Valveless, 5-loop	R32-R20-R32	1	-
A2660600	TruFLOW Jr. Assembly, Balancing Valves and Valveless, 6-loop	R32-R20-R32	1	-
A2660700	TruFLOW Jr. Assembly, Balancing Valves and Valveless, 7-loop	R32-R20-R32	1	-
A2660800	TruFLOW Jr. Assembly, Balancing Valves and Valveless, 8-loop	R32-R20-R32	1	-

Uponor Radiant Heating and Cooling Systems

The TruFLOW Assembly with Balancing and Isolation Valves comes fully assembled and ready for installation. The manifold assembly is shipped with the appropriate number of TruFLOW Manifold Actuator Adapters (A2630028). The manifold body ends have threads as shown below.

Maximum recommended flow to the manifold is 14 gpm for Jr. and 21 gpm for Classic.

TruFLOW Jr. and Classic Assemblies with Balancing and Isolation Valves



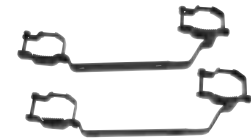
Part No.	Item Description	Dim (Body-Outlets)	Each Qty.	Pkg. Qty.
A2660201	TruFLOW Jr. Assembly, B&I, 2-loop	R32-R20	1	-
A2660301	TruFLOW Jr. Assembly, B&I, 3-loop	R32-R20	1	-
A2660401	TruFLOW Jr. Assembly, B&I, 4-loop	R32-R20	1	-
A2660501	TruFLOW Jr. Assembly, B&I, 5-loop	R32-R20	1	-
A2660601	TruFLOW Jr. Assembly, B&I, 6-loop	R32-R20	1	-
A2660701	TruFLOW Jr. Assembly, B&I, 7-loop	R32-R20	1	-
A2660801	TruFLOW Jr. Assembly, B&I, 8-loop	R32-R20	1	-
A2610200	TruFLOW Classic Assembly, B&I, 2-loop	R32-R20	1	-
A2610300	TruFLOW Classic Assembly, B&I, 3-loop	R32-R20	1	-
A2610400	TruFLOW Classic Assembly, B&I, 4-loop	R32-R20	1	-
A2610500	TruFLOW Classic Assembly, B&I, 5-loop	R32-R20	1	-
A2610600	TruFLOW Classic Assembly, B&I, 6-loop	R32-R20	1	-
A2610700	TruFLOW Classic Assembly, B&I, 7-loop	R32-R20	1	-
A2610800	TruFLOW Classic Assembly, B&I, 8-loop	R32-R20	1	-
A2611000	TruFLOW Classic Assembly, B&I, 10-loop	R32-R20	1	-
A2611200	TruFLOW Classic Assembly, B&I, 12-loop	R32-R20	1	-

TruFLOW Manifold Accessories

TruFLOW Jr. and TruFLOW Classic Manifold Mounting Bracket is used to mount the TruFLOW Jr. and TruFLOW Classic Manifolds. Brackets are made of durable metal and are offset front-to-back and side-to-side for ease of installation. Two brackets are required for each manifold location.

Part No.	Part Description	Each Qty.	Pkg. Qty.
A2640006	TruFLOW Jr. Manifold Mounting Bracket, single bracket	-	10
A2620006	TruFLOW Classic Manifold Bracket, single bracket replacement part	-	10

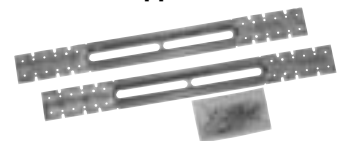
TruFLOW Manifold Mounting Bracket



TruFLOW Support Bracket comes in a set of two and facilitates mounting of TruFLOW Jr. and TruFLOW Classic manifolds between wall studs. The brackets mount in four different configurations – with exposed studs, in a stud cavity, on a flat surface and vertically. The brackets are made of stamped metal construction and accommodates different stud widths.

Part No.	Part Description	Each Qty.	Pkg. Qty.
A2072500	TruFLOW Support Bracket, set of 2	1	-

TruFLOW Support Bracket



Uponor Radiant Heating and Cooling Systems

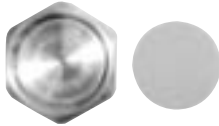
End Cap with Vent



End Cap with Vent caps the end of the TruFLOW Jr. Modular Manifolds. It comes complete with swivel drain valve and manual air vent. Required gasket (A2403232) is included.

Part No.	Part Description	Each Qty.	Pkg. Qty.
A2803250	End Cap with Vent, R32	1	-
A2403232	Manifold Gasket, spare part	-	10

Basic End Cap



Basic End Cap caps the end of the TruFLOW Jr. Modular Manifolds. Required gaskets and o-rings are included.

Part No.	Part Description	Each Qty.	Pkg. Qty.
A2080032	Basic End Cap, R32	-	10

TruFLOW Jr. and Classic Manifold Supply and Return Ball Valves



TruFLOW Manifold Supply and Return Ball Valves are full-flow 1¼" ball valves with R32 male by R32 union nut that fits directly on the TruFLOW Jr. and Classic Manifolds. The Ball Valves come standard with a thermometer for easy visual check of supply temperatures.

Part No.	Part Description	Each Qty.	Pkg. Qty.
A2631250	TruFLOW Manifold Supply and Return Ball Valves, one set	1	-
A2610120	Thermometer with Well, replacement part	-	10

TruFLOW Manifold Coupling Nipple



TruFLOW Manifold Coupling Nipple features male BSP thread on both ends and is used to make the connection between manifold parts. Primary seal for the connection is made with the attached o-ring on the nipple. Thread sealant on the nipple ensures tight bonding between the nipple and the manifold. Use Uponor Silicone Oil (A2620007), sold separately, on the male threads to ease installation.

Part No.	Part Description	Each Qty.	Pkg. Qty.
A2621010	TruFLOW Manifold Coupling Nipple, 1¼" BSP x 1¼" BSP	-	10

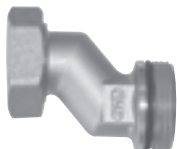
TruFLOW Manifold Elbow Union



Features an R32 union by 1¼" BSP male connection. The union elbow is designed to make tight 90-degree turns from the TruFLOW Classic Manifold supply and return connections. Use Uponor Silicone Oil (A2620007), sold separately, on the male threads to ease installation.

Part No.	Part Description	Each Qty.	Pkg. Qty.
A2620090	TruFLOW Classic Manifold Elbow Union, R32 Union x 1¼" BSP	-	10

TruFLOW Manifold Offset Union



Features an R32 union by 1¼" BSP male connection. This union is designed for easy alignment of the supply and return piping at the manifold. Use Uponor Silicone Oil (A2620007), sold separately, on the male threads to ease installation.

Part No.	Part Description	Each Qty.	Pkg. Qty.
A2620045	TruFLOW Classic Manifold Offset Union, R32 Union x 1¼" BSP	-	10

Uponor Radiant Heating and Cooling Systems

This TruFLOW Classic Manifold Extension Kit is designed for easy in-line extension of up to two additional loops for the TruFLOW Classic Manifold Assembly. The kit contains two 1¼" BSP nipples, one supply manifold, one return manifold and two loop end caps. Use Uponor Silicone Oil (A2620007), sold separately on the male threads to ease installation. A bottle of Uponor Silicone Oil is provided in the kit.

TruFLOW Manifold Extension Kit



Part No.	Part Description	Each Qty.	Pkg. Qty.
A2610100	TruFLOW Classic Manifold Extension Kit, 2 loops	1	-

The TruFLOW Manifold Actuator Adapter is a replacement part. This M28 brass adapter converts the manifold actuator threads to fit the standard Uponor Thermal Actuator (A3010522) and Motorized Actuator (A3020522).

TruFLOW Manifold Actuator Adapter



Note: Use only with the TruFLOW Jr. and Classic Manifolds.

Part No.	Part Description	Each Qty.	Pkg. Qty.
A2630028	TruFLOW Manifold Actuator Adapter, replacement part	-	10

The TruFLOW Manifold Balancing Hex Key is used on the supply manifold to adjust the flow rate across the loop for balancing. Each manifold is shipped with a hex key for balancing.

TruFLOW Manifold Balancing Hex Key



Part No.	Part Description	Each Qty.	Pkg. Qty.
A2620002	TruFLOW Manifold Balancing Hex Key, replacement part	-	10

Use the TruFLOW Visual Flow Meter on TruFLOW Jr. and TruFLOW Classic manifolds to accurately measure the flow of hydronic radiant loops.

TruFLOW Visual Flow Meter



Note: For proper operation, install Flow Meters on the return manifold.

Part No.	Part Description	Each Qty.	Pkg. Qty.
A2640015	TruFLOW Visual Flow Meter, 0.15 to 0.8 gpm	-	10
A2640027	TruFLOW Visual Flow Meter, 0.25 to 2.0 gpm	-	10
A2620009	Replacement O-ring for TruFLOW Flow/Temperature Meter	-	10

TruFLOW Loop Thermometer comes with an QS20 female union on one end and an QS20 male on the other. Thermometer Well and removable thermometer are included.

TruFLOW Loop Thermometer



Part No.	Part Description	Each Qty.	Pkg. Qty.
A2610020	TruFLOW Manifold Loop Thermometer	-	10
A2610120	Thermometer with Well, replacement part	-	10

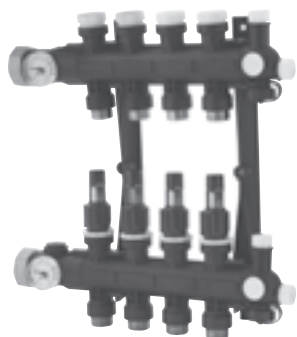
Part No.	Part Description	Each Qty.	Pkg. Qty.
A2400032	Basic End Cap Gasket, spare part, R32	-	10
A2650004	Replacement O-ring for 1½" BSP Connections	-	10
A2620005	Replacement Gasket for R32 Union Connections	-	10
A2620007	Silicone Oil, 1.76 oz. bottle, optional part	-	10
A2620008	Replacement O-ring for 1¼" BSP Connections	-	10

Replacement and Spare Parts for Manifolds

Uponor Radiant Heating and Cooling Systems

Engineered Plastic (EP) Heating Manifolds

EP Heating Manifold Assembly with Flow Meter



The Engineered Plastic (EP) Heating Manifold Assemblies feature isolation valves and balancing valves with flow meters, and come fully assembled, ready for installation. The manifolds are available in 2- through 8-loop configurations. The body ends feature R32 unions and the loop outlets have R20 male threads. The manifold mounts on a bracket (A2670006) that comes with the assembly.

Pressure and Temperature Rating

- 6 bar at 60°C
87 psi at 140°F
- 5 bar at 70°C
72 psi at 158°F
- 4 bar at 80°C
58 psi at 176°F
- 3 bar at 90°C
44 psi at 194°F

Part No.	Part Description	Dimension (Body-Outlets-Body)	Each Qty.	Pkg. Qty.
A2670201	EP Heating Manifold Assembly with Flow Meter, 2-loop	R32-R20-R32	1	-
A2670301	EP Heating Manifold Assembly with Flow Meter, 3-loop	R32-R20-R32	1	-
A2670401	EP Heating Manifold Assembly with Flow Meter, 4-loop	R32-R20-R32	1	-
A2670501	EP Heating Manifold Assembly with Flow Meter, 5-loop	R32-R20-R32	1	-
A2670601	EP Heating Manifold Assembly with Flow Meter, 6-loop	R32-R20-R32	1	-
A2670701	EP Heating Manifold Assembly with Flow Meter, 7-loop	R32-R20-R32	1	-
A2670801	EP Heating Manifold Assembly with Flow Meter, 8-loop	R32-R20-R32	1	-

EP Heating Manifold Accessories

EP Heating Manifold Single Section with Isolation Valve



The EP Heating Manifold Single Section with Isolation Valve is a single loop add-on used on the return side for EP Heating Manifold Assemblies (A2670201 through A2670801).

Part No.	Part Description	Dimension (Body-Outlets-Body)	Each Qty.	Pkg. Qty.
A2670001	EP Heating Manifold Single Section with Isolation Valve	R20	1	-

EP Heating Manifold Single Section with Balancing Valve and Flow Meter



The EP Heating Manifold Single Section with Balancing Valve and Flow Meter is a single loop add-on used on the supply side for EP Heating Manifold Assemblies (A2670201 through A2670801).

Part No.	Part Description	Dimension (Body-Outlets-Body)	Each Qty.	Pkg. Qty.
A2670003	EP Heating Manifold Single Section with Balancing Valve and Flow Meter	R32-R20-R32	1	-

EP Heating Manifold Connection Piece



The EP Heating Manifold Connection Piece connects the manifold to the supply and return piping. Connection fitting size is an R32 union.

Part No.	Part Description	Dimension (Body-Outlets-Body)	Each Qty.	Pkg. Qty.
A2670032	EP Heating Manifold Connection Piece with R32 Union and Thermometer	R32	1	-

Uponor Radiant Heating and Cooling Systems

The EP Heating Manifold Elbow enables connections to supply and return piping from above or below. The two elbows feature different lengths to accommodate tube spacing for the supply and return lines.

EP Heating Manifold Elbow



Part No.	Part Description	Each Qty.	Pkg. Qty.
A2670090	EP Heating Manifold Elbow, set of 2	1	-

The End Cap with Vent and Drain allows filling and purging at the manifold.

End Cap with Vent and Drain



Part No.	Part Description	Each Qty.	Pkg. Qty.
A2671250	EP Heating Manifold End Cap with Vent and Drain	1	-

The EP Heating Manifold Mounting Bracket mount the manifold assembly to a wall.

EP Heating Manifold Mounting Bracket



Part No.	Part Description	Each Qty.	Pkg. Qty.
A2670006	EP Heating Manifold Bracket, set of 2	1	-

The Actuator Adaptor fits four-wire actuator (A3010522) onto the EP Heating Manifold.

EP Heating Manifold Actuator Adapter



Part No.	Part Description	Each Qty.	Pkg. Qty.
A2671300	EP Heating Manifold Actuator Adapter	1	-

The EP Heating Manifold Isolation Valve Body replaces the isolation valve on the return manifold.

EP Heating Manifold Isolation Valve Body



Part No.	Part Description	Each Qty.	Pkg. Qty.
A2670004	EP Heating Manifold Isolation Valve Body, replacement part	1	-

The EP Heating Manifold Flow Meter Valve Body replaces the flow meter valve on the supply manifold.

EP Heating Manifold Flow Meter Valve Body



Part No.	Part Description	Each Qty.	Pkg. Qty.
A2670005	EP Heating Manifold Flow Meter Valve Body, replacement part	1	-

The EP Heating Manifold Thermometer displays the supply and return temperature on the manifold. It snaps into the Connection Piece (A2670032) on the manifold.

EP Heating Manifold Thermometer



Part No.	Part Description	Each Qty.	Pkg. Qty.
A2670132	EP Heating Manifold Thermometer, set of 2	1	-

Uponor Radiant Heating and Cooling Systems

EP Heating Manifold Valve Replacement Tool



Use the Valve Replacement Tool when replacing the Isolation Valve Body (A5670004) and Flowmeter Valve Body (A2670005).

Part No.	Part Description	Each Qty.	Pkg. Qty.
A2670007	EP Heating Manifold Valve Replacement Tool	1	-

EP Heating Manifold Replacement O-ring



The Replacement O-ring allows a proper seal between body parts on the manifold.

Part No.	Part Description	Each Qty.	Pkg. Qty.
A2670008	EP Heating Manifold Replacement O-ring 28.5 x 3mm EPDM	-	10

EP Heating Manifold Two-wire Actuator



The EP Heating Manifold Two-wire Actuator mounts onto the EP Heating Manifold and connects to the Climate Control Zoning System Base Unit (A3601012).

Part No.	Part Description	Each Qty.	Pkg. Qty.
A3030522	EP Heating Manifold Two-wire Actuator	1	-

Manifold Adapters and Fittings

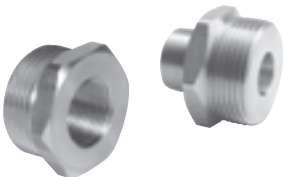
Brass Manifold Combination Adapter/Fitting Adapter



The Brass Manifold Adapter allows either a straight copper pipe or a copper fitting adapter to sweat to the brass manifold adapter. The R32 threaded side couples with the R32 union connection on the brass manifolds.

Part No.	Part Description	Each Qty.	Pkg. Qty.
A4143210	Brass Manifold Adapter, R32 x 3/4" Adapter or 1" Fitting Adapter	-	10
A4133210	Brass Manifold Adapter, R32 x 1" Adapter or 1 1/4" Fitting Adapter	-	10

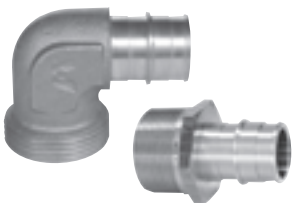
Threaded Brass Manifold Adapter and Bushing



Threaded Brass Manifold Adapter transitions the R32 manifold union nut to PEX or MLC tubing with QS-style fittings.

Part No.	Part Description	Each Qty.	Pkg. Qty.
A2133275	Threaded Brass Manifold Bushing, R32 Male x 3/4" Female NPT	-	10
A2123210	Threaded Brass Manifold Bushing, R32 Male x 1" Female NPT	-	10
A4143220	Threaded Brass Manifold Straight Adapter, R32 x R20	-	10
A4143225	Threaded Brass Manifold Straight Adapter, R32 x R25	-	10

ProPEX Manifold Adapter



ProPEX Manifold Adapter for brass manifolds transitions from the R32 manifold union nut to 3/4" and 1" Uponor PEX tubing.

Part No.	Part Description	Each Qty.	Pkg. Qty.
Q4143275	ProPEX Manifold Straight Adapter, R32 x 3/4" ProPEX	-	10
Q4143210	ProPEX Manifold Straight Adapter, R32 x 1" ProPEX	-	10
Q4153275	ProPEX Manifold Elbow Adapter, R32 x 3/4" ProPEX	-	10
Q4153210	ProPEX Manifold Elbow Adapter, R32 x 1" ProPEX	-	10

Uponor Radiant Heating and Cooling Systems

Brass Manifold Pressure Test Kit contains R32 x 3/4" manifold bushing, R32 solid brass plug, 3/4" brass nipple and pressure gauge assembly (100 psi). Schraeder valve is included.

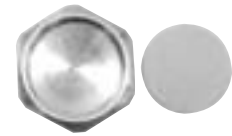
Brass Manifold Pressure Test Kit



Part No.	Part Description	Each Qty.	Pkg. Qty.
E6122000	Brass Manifold Pressure Test Kit	1	-

Brass Manifold Loop End Cap closes off unused QS20 loop connections. Install the supplied Brass Manifold Loop End Cap Gasket (A2400020) with the Loop End Cap to ensure a proper seal.

Brass Manifold Loop End Cap



Part No.	Part Description	Each Qty.	Pkg. Qty.
A2080020	Brass Manifold Loop End Cap	-	10
A2400020	Brass Manifold Loop End Cap Gasket, spare part	-	10

The QS-style Compression Fitting Assembly with o-ring connects 5/16", 3/8", 1/2", and 5/8" Uponor PEX tubing to Uponor brass manifolds and R20 fittings. Sold as a three-piece component. The QS-style compression rings and o-rings are also sold separately.

QS-style Compression Fitting Assembly



Part No.	Part Description	Each Qty.	Pkg. Qty.
A4020313	5/16" QS-style Compression Fitting Assembly, R20 thread	-	10
A4020375	3/8" QS-style Compression Fitting Assembly, R20 thread	-	10
A4020500	1/2" QS-style Compression Fitting Assembly, R20 thread	-	10
A4020625	5/8" QS-style Compression Fitting Assembly, R20 thread	-	10
A4021116	Replacement O-ring for insert (R20)	-	10

The QS-style Compression Fitting Assembly with o-ring connects 5/8" and 3/4" Uponor PEX tubing to 2" Copper Valved Manifolds and other R25 male-threaded fittings.

Part No.	Part Description	Each Qty.	Pkg. Qty.
A4030625	5/8" QS-style Compression Fitting Assembly, R25 thread	-	10
A4020750	3/4" QS-style Compression Fitting Assembly, R25 thread	-	10
A4021000	Replacement O-ring for insert (R25)	-	10

The QS-style Compression Ring (replacement part) is designed and tested for use with Uponor PEX tubing.

QS-style Compression Ring



Note: Do not substitute similar compression rings.

Part No.	Part Description	Each Qty.	Pkg. Qty.
A4160313	5/16" QS-style Compression Ring, spare part	-	10
A4160375	3/8" QS-style Compression Ring, spare part	-	10
A4160500	1/2" QS-style Compression Ring, spare part	-	10
A4160625	5/8" QS-style Compression Ring, spare part	-	10
A4160750	3/4" QS-style Compression Ring, spare part	-	10

Uponor Radiant Heating and Cooling Systems

ProPEX Fitting Assembly



ProPEX Fitting Assembly with ProPEX insert connects 1/2" through 3/4" Uponor PEX tubing to the brass manifolds. Sold as a two-piece assembly, it includes a ProPEX insert and R20 swivel nut.

Note: ProPEX Tool is required. ProPEX Rings sold separately.

Part No.	Part Description	Each Qty.	Pkg. Qty.
Q4020500	1/2" ProPEX Fitting Assembly, R20 thread	-	10
Q4020625	5/8" ProPEX Fitting Assembly, R20 thread	-	10
Q4020750	3/4" ProPEX Fitting Assembly, R20 thread	-	10
A4021116	Replacement O-ring for insert (R20)	-	10

ProPEX Fitting Assembly with ProPEX insert connects 5/8" through 3/4" Uponor PEX tubing to 2" Copper Valved Manifolds and other R25 male-threaded fittings. Sold as a two-piece assembly, it includes a ProPEX insert and R25 swivel nut.

Note: ProPEX Tool is required. ProPEX Rings sold separately. This fitting is not compatible with TruFLOW Jr. or TruFLOW Classic.

Part No.	Part Description	Each Qty.	Pkg. Qty.
Q4030625	5/8" ProPEX Fitting Assembly, R25 thread	-	10
Q4030750	3/4" ProPEX Fitting Assembly, R25 thread	-	10

MLC Press Fitting Assembly



MLC Press Fitting Assembly connects 1/2" and 5/8" MLC tubing to brass manifolds.

Note: The Mini-Press Battery Tool or MLC Press Fitting Manual Tool is required.

Part No.	Part Description	Each Qty.	Pkg. Qty.
D4020500	1/2" MLC Press Fitting Assembly, R20 thread	-	10
D4020625	5/8" MLC Press Fitting Assembly, R20 thread	-	10

MLC Press Fitting Assembly connects 5/8" and 3/4" MLC tubing to 2" Copper Valved Manifolds and other R25 male-threaded fittings.

Part No.	Part Description	Each Qty.	Pkg. Qty.
D4030625	5/8" MLC Press Fitting Assembly, R25 thread	-	10
D4030750	3/4" MLC Press Fitting Assembly, R25 thread	-	10

MLC Tubing Compression Fitting Assembly



MLC Tubing Compression Fitting Assembly, made of heat-treated brass, connects 1/2" and 5/8" MLC tubing to brass manifolds.

Part No.	Part Description	Each Qty.	Pkg. Qty.
D4120500	1/2" MLC Tubing Compression Fitting Assembly, R20 thread	-	20
D4120625	5/8" MLC Tubing Compression Fitting Assembly, R20 thread	-	20

The MLC Tubing Compression Fitting Assembly with o-ring connects 3/4" Uponor MLC tubing to 2" Copper Valved Manifolds and other R25 male-threaded fittings.

Part No.	Part Description	Each Qty.	Pkg. Qty.
D4120750	3/4" MLC Tubing Compression Fitting Assembly, R25 thread	-	20

Uponor Radiant Heating and Cooling Systems

Manifold Wall Cabinets

The Manifold Wall Cabinet is adjustable to accommodate a brass manifold mounted in either a 2x4 or 2x6 stud wall. This is a recess-style cabinet and comes with a removable door-trim package. Mount an Uponor Zone Control Module inside the cabinet for ease of wiring and away from exposure or possible damage.

Note: Wall Cabinets are suitable for all brass manifolds except TruFLOW Sr.

Part No.	Item Description	Each Qty.
A2603524	Manifold Wall Cabinet, 35.5" H x 24" W x 3.5" D	1
A2603530	Manifold Wall Cabinet, 35.5" H x 30.5" W x 3.5" D	1
A2603539	Manifold Wall Cabinet, 35.5" H x 39" W x 3.5" D	1

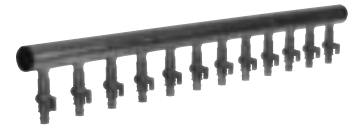


Copper Manifolds

Uponor's 2" x 4' Copper Valved Manifold with ProPEX Ball Valves is made of type L copper and features 5/8" and 3/4" nominal branches that are 4 inches on center. The manifold is available in 12-outlet configurations. The maximum recommended flow to the manifold based on manifold body diameter is 45 gpm.

Part No.	Part Description	Each Qty.	Pkg. Qty.
Q2811263	2" x 4' Copper Valved Manifold with 5/8" ProPEX Ball Valves, 12 outlet	1	-
Q2811275	2" x 4' Copper Valved Manifold with 3/4" ProPEX Ball Valves, 12 outlet	1	-
Q2821263	2" x 4' Copper Valved Manifold with 5/8" ProPEX Ball and Balancing Valves, 12 outlet	1	-
Q2821275	2" x 4' Copper Valved Manifold with 3/4" ProPEX Ball and Balancing Valves, 12 outlet	1	-
F2811220	2" x 4' Copper Valved Manifold with R20 Threaded Ball Valves, 12 outlet	1	-
F2811225	2" x 4' Copper Valved Manifold with R25 Threaded Ball Valves, 12 outlet	1	-
F2821220	2" x 4' Copper Valved Manifold with R20 Threaded Ball and Balancing Valves, 12 outlet	1	-
F2821225	2" x 4' Copper Valved Manifold with R25 Threaded Ball and Balancing Valves, 12 outlet	1	-

2" Copper Valved Manifold with ProPEX Ball Valve



Uponor (2" x 4') Valveless Copper Manifold (type L copper) featuring either 5/8" or 3/4" branches, comes 4 inches on center, and is available in 12-outlet configurations.

Note: ProPEX Tool is required. ProPEX Rings must be purchased separately.

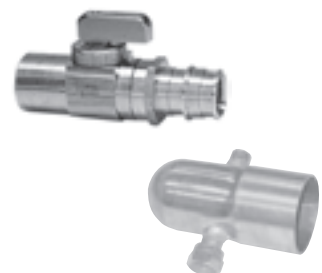
Part No.	Part Description	Each Qty.	Pkg. Qty.
Q2831263	2" x 4' Copper Valveless Manifold with 5/8" ProPEX, 12 outlet	1	-
Q2831275	2" x 4' Copper Valveless Manifold with 3/4" ProPEX, 12 outlet	1	-

2" Copper Valveless Manifold with ProPEX Connection



Part No.	Part Description	Each Qty.	Pkg. Qty.
Q5806375	ProPEX Ball Valve, 5/8" PEX x 3/4" Copper Adapter	-	10
Q5807575	ProPEX Ball Valve, 3/4" PEX x 3/4" Copper Adapter	-	10
Q5906375	ProPEX Ball and Balancing Valve, 5/8" PEX x 3/4" Copper Adapter	-	10
Q5907575	ProPEX Ball and Balancing Valve, 3/4" PEX x 3/4" Copper Adapter	-	10
A5802075	Ball Valve, R20 Thread x 3/4" Copper Adapter	-	10
A5802575	Ball Valve, R25 Thread x 3/4" Copper Adapter	-	10
A5902075	Ball and Balancing Valve, R20 Thread x 3/4" Copper Adapter	-	10
A5902575	Ball and Balancing Valve, R25 Thread x 3/4" Copper Adapter	-	10
A2402000	2" Copper End Cap Spun End with drain and vent connections	1	-

Copper Valved Manifold Accessories



Uponor Radiant Heating and Cooling Systems

HDPE Manifolds and Accessories

HDPE Valveless Manifold



Multiple-outlet HDPE Valveless Manifolds are manufactured with ¾" or 1" 303 stainless steel ProPEX fittings hydraulically pressed onto the outlet nipples. ProPEX connection and manifold are maintenance-free and suitable for direct burial. They're ideal for applications larger than 5,000 square feet or where flow requirements are greater than the capacity of other Uponor manifolds. The HDPE Valveless Manifolds come with standard 12-inch on-center outlet spacing. The maximum recommended flow rates for these manifolds are: 2-inch, 41 gpm; 3-inch, 116 gpm; 4-inch, 226 gpm.

Note: ProPEX Tool is required. Only use in systems free of corrodible components or when there is corrosion control. The temperature limitation is 140°F at 80 psi.

Part No.	Part Description	Each Qty.	Pkg. Qty.
B2252751	2" x 10' HDPE Valveless Manifold (12" o.c.), 10 outlet, ¾" ProPEX	1	-
B2272101	2" x 10' HDPE Valveless Manifold (12" o.c.), 10 outlet, 1" ProPEX	1	-
B2252752	2" x 20' HDPE Valveless Manifold (12" o.c.), 20 outlet, ¾" ProPEX	1	-
B2272102	2" x 20' HDPE Valveless Manifold (12" o.c.), 20 outlet, 1" ProPEX	1	-
B2253751	3" x 10' HDPE Valveless Manifold (12" o.c.), 10 outlet, ¾" ProPEX	1	-
B2273101	3" x 10' HDPE Valveless Manifold (12" o.c.), 10 outlet, 1" ProPEX	1	-
B2253752	3" x 20' HDPE Valveless Manifold (12" o.c.), 20 outlet, ¾" ProPEX	1	-
B2273102	3" x 20' HDPE Valveless Manifold (12" o.c.), 20 outlet, 1" ProPEX	1	-
B2254751	4" x 10' HDPE Valveless Manifold (12" o.c.), 10 outlet, ¾" ProPEX	1	-
B2274101	4" x 10' HDPE Valveless Manifold (12" o.c.), 10 outlet, 1" ProPEX	1	-
B2254752	4" x 20' HDPE Valveless Manifold (12" o.c.), 20 outlet, ¾" ProPEX	1	-
B2274102	4" x 20' HDPE Valveless Manifold (12" o.c.), 20 outlet, 1" ProPEX	1	-

HDPE Fittings

HDPE Elbow



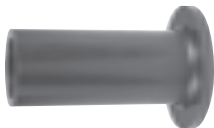
Part No.	Part Description	Each Qty.	Pkg. Qty.
B2162000	HDPE 90-degree Elbow, 2" HDPE x 2" HDPE	1	-
B2163000	HDPE 90-degree Elbow, 3" HDPE x 3" HDPE	1	-
B2164000	HDPE 90-degree Elbow, 4" HDPE x 4" HDPE	1	-
B2192500	HDPE 45-degree Elbow, 2" HDPE x 2" HDPE	1	-
B2193500	HDPE 45-degree Elbow, 3" HDPE x 3" HDPE	1	-
B2194500	HDPE 45-degree Elbow, 4" HDPE x 4" HDPE	1	-

HDPE Tee



Part No.	Part Description	Each Qty.	Pkg. Qty.
B2172000	HDPE Tee, 2" HDPE x 2" HDPE x 2" HDPE	1	-
B2173000	HDPE Tee, 3" HDPE x 3" HDPE x 3" HDPE	1	-
B2174000	HDPE Tee, 4" HDPE x 4" HDPE x 4" HDPE	1	-

HDPE Flange Adapter



Part No.	Part Description	Each Qty.	Pkg. Qty.
B2182000	2" HDPE Flange Adapter	1	-
B2183000	3" HDPE Flange Adapter	1	-
B2184000	4" HDPE Flange Adapter	1	-

Uponor Radiant Heating and Cooling Systems

Part No.	Part Description	Each Qty.	Pkg. Qty.
B2192000	2" HDPE Flange Backup Ring	1	-
B2193000	3" HDPE Flange Backup Ring	1	-
B2194000	4" HDPE Flange Backup Ring	1	-

HDPE Flange Backup Ring



Part No.	Part Description	Each Qty.	Pkg. Qty.
B2202000	HDPE End Cap, 2" HDPE	1	-
B2203000	HDPE End Cap, 3" HDPE	1	-
B2204000	HDPE End Cap, 4" HDPE	1	-

HDPE End Cap



Part No.	Part Description	Each Qty.	Pkg. Qty.
B2223020	HDPE Reducing Coupling, 3" HDPE x 2" HDPE	1	-
B2224020	HDPE Reducing Coupling, 4" HDPE x 2" HDPE	1	-
B2224030	HDPE Reducing Coupling, 4" HDPE x 3" HDPE	1	-

HDPE Reducing Coupling



Climate Cöntrol™ Multifunction

The Climate Cöntrol™ Multifunction hydronic controller is designed to simplify installations. This control incorporates all mechanical functions required in radiant floor heating, boiler staging and control, domestic hot water (DHW), snow melt, zone pumping and supply water temperature mixing. Input connections use a simple push-style connector and outputs use Cat5 cables and connector to control the output devices. Use the simple five-button display to set up and activate the functionality required for the individual installation. A data stick is included to save the setup configuration.

Part No.	Part Description	Each Qty.	Pkg. Qty.
A8020000	Multifunction Hydronic Control	1	-

Climate Cöntrol Multifunction



The Climate Cöntrol Multifunction unit controls and stages up to four boilers. Use the Boiler Relay to mount on or near the boiler. Connect to the Multifunction Climate Cöntrol unit using a standard Cat5 cable with RJ45 ends.

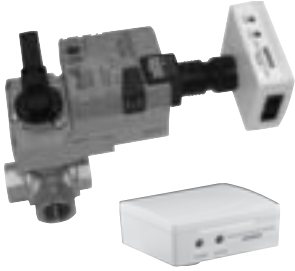
Part No.	Part Description	Each Qty.	Pkg. Qty.
A9012010	Boiler Relay, On-Off	1	-

Boiler Relay



Uponor Radiant Heating and Cooling Systems

Three-way Modulating Valve with Control



The Climate Cöntrol Multifunction unit provides mixing control of any Three-way Modulating Valves (0-10VDC) up to three different water temperatures in either radiant heating or snow-melting applications. Mount the Modulating Valve Control on or near the valve. Connect to the Climate Cöntrol Multifunction unit using a standard Cat5 cable with RJ45 ends. Uponor offers three-way valves with the valve control pre-wired and mounted to the motor.

Part No.	Part Description	Each Qty.	Pkg. Qty.
A9013021	¾" Three-way Modulating Valve with Control (Cv = 4.7)	1	-
A9013022	1" Three-way Modulating Valve with Control (Cv = 10.0)	1	-
A9013023	1¼" Three-way Modulating Valve with Control (Cv = 19.0)	1	-
A9013024	1½" Three-way Modulating Valve with Control (Cv = 29.0)	1	-
A9063020	Modulating Valve Control, 0-10V	1	-

Pump Relay



The Climate Cöntrol Multifunction unit controls any pump or circulator up to 3A for primary, domestic, snow melt, secondary or zone pump operation. Mount the Pump Relay on or near the pump. Connect to the Multifunction Climate Cöntrol unit using a standard Cat5 cable with RJ45 ends.

Part No.	Part Description	Each Qty.	Pkg. Qty.
A9013030	Pump Relay	1	-

Snow-melt Accessories



The Climate Cöntrol Multifunction unit supports snow-melt operation for up to two zones through the use of the Uponor Snow-melt Sensor, which wires to the main control panel using a Cat5 cable and RJ45 ends for simple and easy connections.

Note: Use the Automatic Snow and Ice Sensor for full automatic operation. The Snow-melt Sensor connects to the Multifunction Climate Cöntrol unit using a standard Cat5 cable with RJ45 ends.

Part No.	Part Description	Each Qty.	Pkg. Qty.
A9013051	Snow-melt Sensor (includes 10k sensor and well)	1	-
A9013052	Automatic Snow and Ice Sensor (includes cup and sensor)	1	-

Sensors



The Climate Cöntrol Multifunction unit provides a variety of sensors to provide temperature information. The Dual Sensor reads tubing temperatures for secondary (mixed) or primary loops. The Outdoor Sensor connects to the Multifunction Climate Cöntrol with 18-2 AWG thermostat wire to a dedicated terminal. The Domestic Hot Water (DHW) Sensor and Dual Sensor connect using standard Cat5 cables with RJ45 ends to the appropriate device or control.

Part No.	Part Description	Each Qty.	Pkg. Qty.
A9012002	Domestic Hot Water (DHW) Sensor, 10k	1	-
A9013001	Dual Sensor, Supply and Return, 10k	1	-
A9011001	Outdoor Sensor, 10k (replacement part)	1	-

Uponor Radiant Heating and Cooling Systems

The following tools, cables and accessories are available to complete and simplify the Climate Cönl Multifunction installation.

Climate Cönl Multifunction Replacement Parts and Accessories

Part No.	Part Description	Each Qty.	Pkg. Qty.
A8010002	Data Stick (replacement part)	1	-
A8010004	Replacement Display	1	-
A9030001	Cat5 Patch Cable (1 ft.)	1	-
A9030003	Cat5 Patch Cable (3 ft.)	1	-
A9030007	Cat5 Patch Cable (7 ft.)	1	-
A9030015	Cat5 Patch Cable (15 ft.)	1	-
A9030100	Cable Tester	1	-
A9030200	Cat5 Cable Stripper	1	-
A9030300	Modular Plug Crimping Tool	1	-
A9030111	RJ45 Connectors, 50 pack	-	50
A9031000	Cat5 Wire, 1,000-ft. roll	1	-

Mixing Controls

Three-way Tempering Valves thermostatically control water temperatures between 80°F and 180°F. These non-corrosive reactive valves come with either a 1-inch threaded or sweat connection.

Three-way Tempering Valve

Part No.	Part Description	Each Qty.	Pkg. Qty.
A5400102	1" Three-way Tempering Valve	1	-
A5401112	1" Three-way Tempering Valve w/Union	1	-
A5401110	1" Three-way Tempering Valve Replacement Gaskets, set of three	1	-



The self-acting, automatic Differential Pressure By-pass Valve maintains flow rates (e.g., through a low-water content gas boiler), or controls the differential pressure in a hydronic heating system. Valves come with NPT unions.

Differential Pressure By-pass Valve

Part No.	Part Description	Each Qty.	Pkg. Qty.
A5410750	¾" Differential Pressure By-pass Valve	1	-
A5411000	1" Differential Pressure By-pass Valve	1	-



Climate Cönl Zoning System

The Climate Cönl Zoning System Starter Kit includes a Base Unit (C-55), an Interface (I-75), a removable antenna, cables for connections, mounting accessories, instructions and a manual. Located near the radiant system manifolds, the Base Unit can handle up to 12 thermostats (sold separately) and control up to 14 thermal actuators (sold separately). Each actuator controls the flow of the water through loops of PEX tubing in a radiant system.

Climate Cönl Zoning System Starter Kit

Part No.	Part Description	Each Qty.
A3601000	Climate Cönl Zoning System Starter Kit (Base Unit, Interface, Cables, Antenna)	1



Uponor Radiant Heating and Cooling Systems

Zoning Base Unit



Located near the radiant system manifolds, the Base Unit can handle up to 12 thermostats (sold separately) and control up to 14 thermal actuators (sold separately). Each actuator controls the flow of the water through loops of PEX tubing in a radiant system. An interface (I-75) can be added for additional features (sold separately).

Part No.	Part Description	Each Qty.
A3601012	Zoning Base Unit (C-55), 12 Zones	1

Zoning Thermostat (T-75)



The wireless Zoning Thermostat (T-75) works with the Climate Control Zoning System. With sensors for optimal temperature measurement and battery-status indicators, the thermostat is available in either white or silver finish. Each thermostat uses two standard AAA batteries. Setpoint temperature range is 41 °F (5°C) to 95 °F (35°C).

Part No.	Part Description	Each Qty.
A3600075	Zoning Thermostat (T-75), white	1
A3600275	Zoning Thermostat (T-75), silver	1

Zoning Interface (I-75)



The Zoning Interface (I-75) allows users to view system temperatures and status. The interface can connect up to three base units with a regular telephone cable and program up to five temperature setbacks. It also designates room names for each thermostat, and displays system issues. Additional features include valve and pump exercises, vacation scheduling and automatic summer and winter settings.

Part No.	Part Description	Each Qty.
A3601075	Zoning Interface (I-75)	1

Zoning Thermostat Mounting Kit



The Zoning Mounting Kit uses double-stick pads (included) to mount the thermostat (T-75) on tile or other smooth surfaces. The kit also includes a table stand to place the thermostat anywhere.

Part No.	Part Description	Each Qty.
A3600175	Zoning Thermostat Mounting Kit, white	1
A3600375	Zoning Thermostat Mounting Kit, silver	1

Zoning Base Unit Antenna



The Zoning Base Unit Antenna is a replacement part for the Zoning Base Unit.

Part No.	Part Description	Each Qty.
A3601001	Zoning Base Unit Antenna, replacement	1

Zoning Cable Kit



The replacement Zoning Cable Kit includes all needed cables (1-ft. antenna cable, 10-ft. antenna cable and 10-ft. display cable).

Part No.	Part Description	Each Qty.
A3601002	Zoning Cable Kit	1

Uponor Radiant Heating and Cooling Systems

The Zoning Language Stick is a replacement part for the Zoning Interface (I-75).

Zoning Language Stick



Part No.	Part Description	Each Qty.
A3600005	Zoning Language Stick, replacement	1

Two-wire, slow-opening thermal actuator, mounts directly onto TruFLOW™ Classic and Jr. valved manifolds and connects to the Zoning base unit (C-55). It provides individual loop flow control on a multi-zoned manifold (a manifold serving more than one zone).

Two-wire Thermal Actuator for TruFLOW Manifold



Part No.	Part Description	Each Qty.
A3030522	Two-wire Thermal Actuator (for EP Heating Manifold)	1
A3030523	Two-wire Thermal Actuator (for TruFLOW Classic and Jr. Valved Manifolds)	1

Zoning Controls

The Heat-only Thermostat (A3030101) and the Heat and Cool Thermostat (A3030102) are designed to operate in heating mode over two wires. These types of thermostats obtain their power for operation from taking voltage from the connected wiring. Different from other industry power-sharing thermostats, these eliminate any need for a third wire or battery, which makes the thermostats simple to install, wire and service.

Room Thermostat



Part No.	Part Description	Each Qty.	Pkg. Qty.
A3030101	Heat-only Thermostat, two-wire	1	-
A3030103	Heat-only Thermostat, three-wire	1	-
A3030102	Heat and Cool Thermostat	1	-

The SetPoint 501s is a single-stage, non-programmable setpoint controller designed to sense air, floor or both temperatures with the ability to select one or the other as the primary sensing point (floor sensor included).

SetPoint 501s, 150, 501, 511s, 512 Controllers



Part No.	Part Description	Each Qty.	Pkg. Qty.
A3041501	SetPoint 501s, Single-stage SetPoint Controller with floor sensor	1	-
A3040079	Floor Sensor, replacement part	1	-
A3040007	Cover Plate for 500 Series Controllers	-	10
A3040150	SetPoint 150 Controller	1	-
A3040501	SetPoint 501, Single-stage SetPoint Controller	1	-
A3041511	SetPoint 511s, Single-stage Programmable Controller with floor sensor	1	-
A3040512	SetPoint 512, Two-stage Programmable Controller	1	-

Uponor Radiant Heating and Cooling Systems

Zone Control Module



The Zone Control Module is designed for use with Uponor Thermostats, Motorized Valve Actuators (MVAs), Thermal Actuators or Zone Valves. The Zone Control Module provides connection between the thermostats and their respective actuators or zone valves; and the connection between the end switches and the pump or boiler relay. The modules are internally fused for protection from over current or direct shorts from the power supply transformer. The end switch circuit is also protected from over current, and a 2 amp fuse is factory installed.

Part No.	Part Description	Each Qty.	Pkg. Qty.
A3030003	Three-zone Control Module	1	-
A3030004	Four-zone Control Module	1	-
A3030009	Replacement Fuse (2 amps), 4/pkg.	1	-
A3030010	Replacement Fuse (4 amps), 4/pkg.	1	-

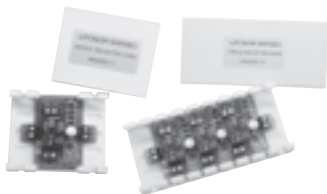
Powered Zone Controller



The Powered Four- and Six-zone Controllers include transformers for low-voltage operations and relays to operate line-voltage controls. Fully fuse-protected, they also include an isolated end switch and built-in DHW priority switch. The indicator lights show full functionality of the products wired to the Powered Zone Controllers. A 3-amp delay fuse protects the Powered Four-zone Controller. A 7-amp delay fuse protects the Powered Six-zone Controller.

Part No.	Part Description	Each Qty.	Pkg. Qty.
A3080404	Powered Four-zone Controller	1	-
A3080406	Powered Six-zone Controller	1	-

Isolation Card



The low-voltage (24VAC) Isolation Card provides separation or isolation between power-sharing thermostats and the loads they control. The cards also isolate power variations caused by third-party components.

Part No.	Part Description	Each Qty.	Pkg. Qty.
A3030111	Single Isolation Card (24VAC)	1	-
A3030113	Triple Isolation Card (24VAC)	1	-

Thermal Actuator



Slow-opening thermal actuator (24VAC) mounts directly onto TruFLOW Valved Manifolds. It provides individual loop flow control on a multi-zoned manifold (manifold serving more than one zone). Thermal Actuator includes end switch for activation of relay (pump), heat plant or other auxiliary devices.

Part No.	Part Description	Each Qty.	Pkg. Qty.
A3020416	Thermal Actuator, two-wire	1	100
A3010522	Thermal Actuator, four-wire	1	100

Motorized Valve Actuator (MVA)



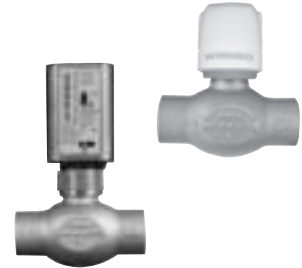
The Motorized Valve Actuator (MVA) (24VAC) features quick-opening motorized valve head that mounts directly onto TruFLOW Valved Manifolds. The open/close indicator allows for easy visual inspection. It provides individual flow control on a multi-zoned manifold (manifold serving more than one zone). MVA includes end switch for activation of relay (pump), heat plant or other auxiliary devices. **Do not mount actuators upside down.**

Part No.	Part Description	Each Qty.	Pkg. Qty.
A3020522	Motorized Valve Actuator (MVA), four-wire	1	50

Uponor Radiant Heating and Cooling Systems

Four-wire Zone Valve (24 VAC) features 3/4- and 1-inch sweat connections. It provides flow control for a single-zoned manifold (manifold serving one zone), and has a built-in flow-balancing feature. The zone valve includes end switch for activation of relay (pump), heat plant or other auxiliary devices. **Do not mount actuators upside down.**

Zone Valve



Part No.	Part Description	Each Qty.	Pkg. Qty.
A3010525	3/4" Thermal Zone Valve, four-wire	1	25
A3010526	1" Thermal Zone Valve, four-wire	1	25
A3070525	3/4" MVA Zone Valve, four-wire	1	25
A3070526	1" MVA Zone Valve, four-wire	1	25

The Single-zone Pump Relay controls the operation of a single circulator or pump from a 24-volt signal. Relay includes secondary low-voltage terminals for boiler operation.

Pump Relay

The Three-zone Multi-pump relay controls the operation of up to three pumps or circulators from dedicated 24-volt signals. Relay includes secondary low-voltage terminals for boiler operation and DHW priority options.

Part No.	Part Description	Each Qty.	Pkg. Qty.
A3010100	Single-zone Pump Relay	1	-
A3080301	Three-zone Multi-pump Relay	1	-



50 VA Transformer (24VAC) comes with a 4" x 4" metal mounting plate.

Transformer

Part No.	Part Description	Each Qty.	Pkg. Qty.
A3050050	50 VA Transformer	1	-



Climate Control Network System

Uponor's Climate Control Network System offers a variety of configuration of the main controllers that get mounted into a cabinet. See the table below to correctly identify the controls required in the main cabinet to provide the necessary functionality.

Cabinet Functions

Part Number	Functionality
A9011000	Thermostats and Air System Functionality
A9012000	Boilers, Domestic Hot Water Tank(s) and Primary Pump
A9013000	Mixing and Snow Melting
A9014000	Zone Pumping

The Router Main Control (RTR) provides connections to the Digital Zone Control Modules and other devices such as the Furnace and Air Conditioning Heat Recovery Ventilator and Zone Valve Damper control boards. The control also provides a connection to the internet for remote viewing (optional). All connections are RJ45 and use Cat5 wire to communicate to devices. The internet is not a requirement for system operation. Includes control cabinet mounting screws and power connector.

Network Router Main Control (RTR)



Part No.	Part Description	Each Qty.
A9011000	Router Main Control (RTR)	1

Uponor Radiant Heating and Cooling Systems

Network Primary Equipment Control (PEC)



The Primary Equipment Control (PEC) provides connections to the boiler(s), primary pump, domestic hot water tanks, outdoor sensor and an option system sensor. All connections are RJ45 and require the use of a Cat5 wire for the Primary Equipment Control (PEC) to communicate with the other devices. Includes control cabinet mounting screws and power and communication cable with plugs to interconnect controls.

Part No.	Part Description	Each Qty.
A9012000	Primary Equipment Control (PEC)	1

Network Supply Water Temperature Control (SWT)



The Supply Water Temperature Control (SWT) provides connections to the mixing devices and secondary pumps. The SWT controls either modulating valves or injection pumps or a combination of both. All connections are RJ45 and require the use of a Cat5 wire for the SWT to communicate with the other devices. Includes control cabinet mounting screws and power and communication cable with plugs to interconnect controls.

Part No.	Part Description	Each Qty.
A9013000	Supply Water Temperature Control (SWT)	1

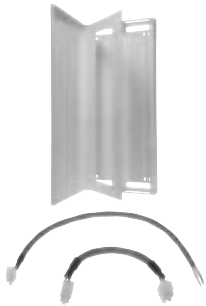
Network Zone Pump Control (ZPC)



The Zone Pump Control (ZPC) provides connections to zone pumps used in the system in radiant, baseboard, hot water coil or high temperature applications. All connections are RJ45 and require the use of a Cat5 wire for the ZPC to communicate with the other devices. Includes control cabinet mounting screws and power and communication cable with plugs to interconnect controls.

Part No.	Part Description	Each Qty.
A9014000	Zone Pump Control (ZPC)	1

Network Control Cabinet and Components



The Climate Control Network System Control Cabinet is a low-profile enclosure that houses all main controllers (RTR, PEC, SWT, ZPC). The cabinet is powder-coated white and can mount in either a right-hand or left-hand hinged configuration. Includes hinged inner door with screw lock to conceal network cable and connectors.

Part No.	Part Description	Each Qty.
A9010000	Control Cabinet, 4-position	1
A9010001	Control Cabinet, 3-position	1
A9010002	Control Cabinet, 2-position	1
A9010003	Control Cabinet, 1-position	1
A9060001	Main Panel Power Cable with Plug (24vac), replacement part	1
A9060002	Main Panel Interconnect Cable with Plugs, replacement part	1

Network Digital Zone Control Module (DZCM)



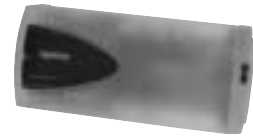
The Network Digital Zone Control Module (DZCM) is a control board that provides connections to the Network System thermostats and plug-in actuators. The DZCM requires 24VAC to power the control, actuators and thermostats. The DZCM uses a rotary address switch and requires a unique address number for each DZCM used in the system. The molex or plug-in connectors allow for simple and easy installation when using the Thermal Valve Actuator with Molex Plug (A9010501). Not for use with other actuators. The Digital Zone Control Module communicates with the Router Main Control over Cat5 wire and RJ45 connectors.

Part No.	Part Description	Each Qty.
A9011500	Digital Zone Control Module (DZCM)	1
A9010501	Thermal Valve Actuator with Molex Plug	1

Uponor Radiant Heating and Cooling Systems

The Network Furnace and Air Condition (FAC) Control board provides control of Fan, Air Heat, Cooling, Humidification and Dehumidification functions. This device is used for operation of air handlers, furnaces and rooftop units. The FAC has two additional contacts for 10K sensors for additional system feedback. All connections are screw terminals blocks and are removable from the board for ease of wiring. The board comes with a manual switch that can be set in the Off-Auto-Manual positions. The FAC requires 24VAC and communicates with the Router Main Control over Cat5 wire and RJ45 connectors.

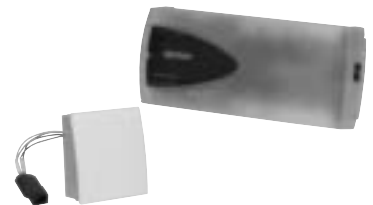
Network Furnace and Air Condition Control (FAC)



Part No.	Part Description	Each Qty.
A9011100	Furnace and Air Condition Control (FAC)	1

The Network Heat Recovery Ventilator (HRV) Control board provides control of up to three speeds of operation: Low, Medium and High. All connections are screw terminals blocks and are removable from the board for ease of wiring. The board comes with a manual switch that can be set in the Off-Auto-Manual positions. The HRV communicates with the Router Main Control over Cat5 wire and RJ45 connectors along with power for the board.

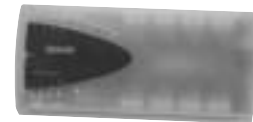
Network Heat Recovery Ventilator Control (HRV)



Part No.	Part Description	Each Qty.
A9011200	Heat Recovery Ventilator Control (HRV)	1
A9010201	VOC-CO2 Indoor Air Quality Sensor, optional	1

The Network Zone Valve Damper (ZVD) Control provides control of up to eight zone valves or zone dampers for On-Off operation. All connections are screw terminals blocks and are removable from the board for ease of wiring. Jumper pins on the board can be set for dry contact or powered switching along with address number and device type (valves or dampers). The board comes with a manual switch that can be set in the Off-Auto-Manual positions. The Zone Valve Damper Control (ZVD) communicates with the Router Main Control over Cat5 wire and RJ45 connectors and requires a 24VAC power source.

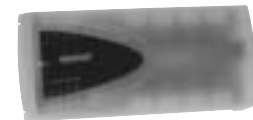
Network Zone Valve Damper Control (ZVD)



Part No.	Part Description	Each Qty.
A9011400	Zone Valve and Damper Control (ZVD)	1

The Network Generic Input/Output (GIO) board provides control of up to eight low-voltage devices for On-Off operation along with detecting eight switched inputs. All connections are screw terminals blocks and are removable from the board for ease of wiring. Jumper pins on the board can be set for dry contact or powered switching along with address number and device type. The board comes with a manual switch that can be set in the Off-Auto-Manual positions. The GIO board communicates with the Router Main Control over Cat5 wire and RJ45 connectors and requires a 24VAC power source.

Network Generic Input/Output (GIO) Control



Part No.	Part Description	Each Qty.
A9011600	Network Generic Input/Output (GIO)	1

The Climate Cöntrol Network System features a series of Network Device Controls, specific for the equipment the network will control. Each control connects with the main panel controllers over a Cat5 wire and RJ45 connectors. Connection points inside the panel will depend on the function it serves. Inside each enclosure, a switch is provided for Auto and Manual operation. LEDs on the case provide feedback to the mode of operation and if the device is wired correctly. Each control has a 3/4" thread for mounting directly to the equipment or to a standard electrical box knockout. The Variable Speed Pump Control requires a pump that will accept a 0-10VDC control signal.

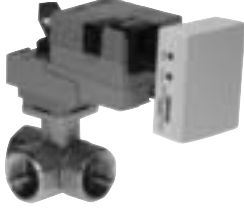
Network Relay



Part No.	Part Description	Each Qty.
A9012010	Boiler Relay, On-Off	1
A9012020	Boiler Relay, Modulating 0-10VDC	1
A9063020	Modulating Valve Control, 0-10v	1
A9013030	Pump Relay, On-Off	1
A9013040	Network Variable Speed Pump Control, Modulating 0-10VDC	1

Uponor Radiant Heating and Cooling Systems

Modulating Valve



Part No.	Part Description	Each Qty.
A9013021	¾" Three-Way Modulating Valve w/control, 0-10v (Cv=4.7)	1
A9013022	1" Three-Way Modulating Valve w/control, 0-10v (Cv=10)	1
A9013023	1¼" Three-Way Modulating Valve w/control, 0-10v (Cv=19)	1
A9013024	1½" Three-Way Modulating Valve w/control, 0-10v (Cv=29)	1
A9013098	Replacement Powerhead only for ¾" and 1" valves, replacement part	1
A9013099	Replacement Powerhead only for 1¼" and 1½" valves, replacement part	1

Network Snow melting Control



The Climate Cöntrol Network System features for easy integration of zoned snow melting for up to four (4) different areas. The snow melting can automatically or manually with the Snow/Ice sensor (sold separately). A 10k slab sensor is included with the Network Snow-melt Control.

Part No.	Part Description	Each Qty.
A9013051	Snow Melt Control, includes 10k sensor	1
A9013052	Automatic Snow and Ice Sensor (includes cup and sensor)	1
A9013053	Snow melt Slab Sensor (10k), replacement part	1

Network Thermostat



The Network System uses a proprietary new style thermostat to control and integrate the heating, cooling and ventilation requirements of today's market. The flush-mount thermostats are low-profile, and use remodeler wings to attach behind walls ½" to ¾" thick. The surface mount attaches to a standard electrical box or can fix to any flat surface using screws or anchors (not included). All styles include an air sensor, humidity sensor (%RH) and option terminals for slab sensing if required. A plug makes for simple and easy connections using 18/2 AWG LVT and controls up to two stages of heating, two stages of cooling and supplemental all over two wires. The thermostats are polarity sensitive and cannot be used with conventional control systems. An option wall sensor is available for installations requiring invisible room control while keeping the same functionality.

Part No.	Part Description	Each Qty.
A9010510	Surface-mount Thermostat, vertical display	1
A9010520	Flush-mount Thermostat, vertical display	1
A9010530	Flush-mount Thermostat, horizontal display	1
A9010540	Wall Sensor, no display	1
A9010599	Slab Sensor, 10k	1

Network System Sensor



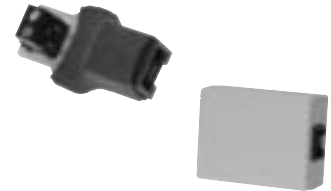
The Climate Cöntrol Network System uses a variety of sensors to provide feedback and information to the main controls. From sensing tubing temperature to domestic hot water to an optional system pressure sensor, all sensors easily connect to the system, simplifying wiring and reducing the amount of wire required in conventional control systems.

Part No.	Part Description	Each Qty.
A9012005	Outdoor Sensor, 10k	1
A9012002	Domestic Hot Water (DHW) Tank Sensor, 10k	1
A9012003	Domestic Hot Water Recirculation Sensor, 10k	1
A9012004	System Pressure Sensor, On-Off	1
A9013001	Supply and Return Sensor, 10k	1

Uponor Radiant Heating and Cooling Systems

The Network System uses Cat5 connections and cables to connect the different hardware throughout an installation. Use the Wire Converter in retrofit applications where it is necessary to convert a pair of 18-2 low-voltage thermostat wires to Cat5. The Network Y-Connector is used when daisy-chaining controls to simplify systems and eliminate additional wiring.

Network System Wiring Accessories



Part No.	Part Description	Each Qty.
A9011002	Network Wire Converter	1
A9011003	Network Y-Connector	1

The Touch Panel Interface (TPI) is a 5" x 7" high-definition touch screen that can integrate into any Climate Control Network System. The screens provide the end user simple access to all the functions setting through a simple-to-use, high-quality graphical program at one location. Items include: viewing rooms, changing room temperatures, changing modes, setting schedules along with domestic hot water, snow-melt functionality and much more. Multiple TPIs can be installed in a single system.

Network Touch Panel Interface (TPI)



Part No.	Part Description	Each Qty.
A9070000	Touch Panel Interface (TPI)	1

Uponor provides a high-quality graphical software program that allows the installer to properly set up and configure the system. The package comes with a USB key and software CD. The CD contains the necessary files to run UCT product manuals, instruction sheets and other help files. The USB key is required to be plugged into the laptop or computer the UCT program is running on. The key is not needed to access manuals and documentation.

Network Configuration Tool (UCT)



Part No.	Part Description	Each Qty.
A9090000	Uponor Configuration Tool (UCT 1.0) Software Package	1

Fully Assembled Panels

The proPANEL® 90 unit offers a simple pumping station, used for radiant heating or as a high-temperature loop. The proPANEL 90 is pre-wired to a control interface, meaning the pump relay is connected to the control interface using a Cat5 cable. The panel is prepared to connect to the Climate Control Multifunction hydronic controller. The panel features 1-inch steel piping. The maximum recommended flow is 9 gpm.

Panel dimensions are 18" wide, 26" high and 7" deep; weighs 26 lbs.

proPANEL 90



Part No.	Part Description	Each Qty.	Pkg. Qty.
A3509000	proPANEL 90	1	-

The proPANEL 90Z unit offers a pumping station with zoning capability (two zones). Featuring 1-inch valves for zoning, the proPANEL 90Z is pre-wired to a control interface, meaning the pump relay is connected to the control interface using a Cat5 cable. The two actuators controlling the valves are also pre-wired into the interface. The panel is prepared to connect to the Multifunction Climate Control hydronic controller. The panel features 1-inch stainless steel piping on the primary side and 3/4-inch stainless steel piping on the secondary side. The maximum recommended flow is 4.5 gpm per outlet.

The panel features 1-inch stainless steel piping. The maximum recommended flow is 9 gpm.

Panel dimensions are 18" wide, 26" high and 7" deep; weighs 32 lbs.

proPANEL 90Z



Part No.	Part Description	Each Qty.	Pkg. Qty.
A3509002	proPANEL 90Z	1	-

Uponor Radiant Heating and Cooling Systems

proPANEL 90M



The proPANEL 90M unit offers a one-temperature mixing and pumping station using a three-way motorized mixing valve (0-10V). The proPANEL 90MZ is controlled by connecting it to a Multifunction unit.

The proPANEL 90M is pre-wired to a control interface, meaning the pump relay and the mixing valve are connected to the control interface using a Cat5 cable. Sensors are attached to the tubing to monitor the secondary supply temperature at the selected level. They are also pre-wired to the control interface.

The panel features 1-inch stainless steel piping. The maximum recommended flow is 9 gpm.

Panel dimensions are 18" wide, 26" high and 7" deep; weighs 30 lbs.

Part No.	Part Description	Each Qty.	Pkg. Qty.
A3509500	proPANEL 90M	1	-

proPANEL 90MZ



The proPANEL 90MZ unit offers a one-temperature mixing and pumping station with zoning capacity (two zones). The proPANEL 90MZ uses 1-inch valves for zoning and a three-way motorized mixing valve (0-10V) for mixing. To control the proPANEL 90MZ, it must connect to a Multifunction. The proPANEL 90MZ is pre-wired to a control interface, meaning the pump relay and the mixing valve are connected to the control interface using a Cat5 cable. Sensors are attached to the tubing to maintain the secondary supply temperature at the selected level, those are also pre-wired to the control interface. The two actuators controlling the valves are also pre-wired into the control interface.

The panel features 1" stainless steel piping. The maximum recommended flow is 4.5 gpm per outlet.

Panel dimensions are 18" wide, 26" high and 7" deep; weighs 37 lbs.

Part No.	Part Description	Each Qty.	Pkg. Qty.
A3509502	proPANEL 90MZ	1	-

ProPEX Fittings

ProPEX Ring



A ProPEX Ring is required to make a ProPEX connection. The 1/2" and 3/4" rings now include a leading edge chamfer and integral stop edge to further simplify the use of ProPEX fittings. Red and blue print on the rings distinguishes hot and cold lines.

Part No.	Part Description	Pkg. Qty.	Case Qty.
Q4690511	ProPEX Ring with Stop, 1/2" (red print)	50	2,000
NEW Q4690512	ProPEX Ring with Stop, 1/2"	50	2,000
NEW Q4690756	ProPEX Ring with Stop, 3/4"	50	1,000
Q4680625	ProPEX Ring, 5/8"	50	1,000
Q4681000	ProPEX Ring, 1"	50	500
Q4681250	ProPEX Ring, 1 1/4"	10	200
Q4681500	ProPEX Ring, 1 1/2"	5	100
Q4682000	ProPEX Ring, 2"	10	100

Uponor Radiant Heating and Cooling Systems

ProPEX EP Coupling makes PEX-to-PEX connections.

Note: ProPEX Tool is required. ProPEX Rings sold separately.

ProPEX EP Coupling



Part No.	Part Description	Pkg. Qty.	Case Qty.
Q4775050	ProPEX EP Coupling, 1/2" PEX x 1/2" PEX	25	100
Q4776363	ProPEX EP Coupling, 5/8" PEX x 5/8" PEX	10	100
Q4777575	ProPEX EP Coupling, 3/4" PEX x 3/4" PEX	25	100
Q4771010	ProPEX EP Coupling, 1" PEX x 1" PEX	10	100
NEW Q4772020	ProPEX EP Coupling, 2" PEX x 2" PEX	5	-
NEW Q4771307	ProPEX EP Coupling, 1 1/4" PEX x 3/4" PEX	10	100
NEW Q4771310	ProPEX EP Coupling, 1 1/4" PEX x 1" PEX	10	100
NEW Q4771313	ProPEX EP Coupling, 1 1/4" PEX x 1 1/4" PEX	10	100
NEW Q4771507	ProPEX EP Coupling, 1 1/2" PEX x 3/4" PEX	10	100
NEW Q4771510	ProPEX EP Coupling, 1 1/2" PEX x 1" PEX	10	100
NEW Q4771513	ProPEX EP Coupling, 1 1/2" PEX x 1 1/4" PEX	10	100
NEW Q4771515	ProPEX EP Coupling, 1 1/2" PEX x 1 1/2" PEX	10	100

ProPEX Brass Coupling makes PEX-to-PEX connections.

Note: ProPEX Tool is required. ProPEX Rings sold separately.

ProPEX Brass Coupling

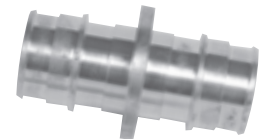


Part No.	Part Description	Pkg. Qty.	Case Qty.
* Q4545050	ProPEX Brass Coupling, 1/2" PEX x 1/2" PEX	25	100
* Q4546363	ProPEX Brass Coupling, 5/8" PEX x 5/8" PEX	10	100
* Q4547575	ProPEX Brass Coupling, 3/4" PEX x 3/4" PEX	25	100
* Q4541010	ProPEX Brass Coupling, 1" PEX x 1" PEX	10	100
* Q4542020	ProPEX Brass Coupling, 2" PEX x 2" PEX	5	-

ProPEX DZR Brass Coupling makes PEX-to-PEX connections. DZR fittings are safe for direct burial in soil.

Note: ProPEX Tool is required. ProPEX Rings sold separately.

ProPEX DZR Brass Coupling



Part No.	Part Description	Each Qty.	Pkg. Qty.
* G4547575	ProPEX DZR Brass Coupling, 3/4" PEX x 3/4" PEX	-	10
* G4541010	ProPEX DZR Brass Coupling, 1" PEX x 1" PEX	-	10
* G4541313	ProPEX DZR Brass Coupling, 1 1/4" PEX x 1 1/4" PEX	-	10
* G4541515	ProPEX DZR Brass Coupling, 1 1/2" PEX x 1 1/2" PEX	-	10
* G4542020	ProPEX DZR Brass Coupling, 2" PEX x 2" PEX	-	5

* Engineered plastic alternate available in EP section.

◀ Discontinued item; available while quantities last. Please contact Uponor Customer Service for availability. All sales are final.

Uponor Radiant Heating and Cooling Systems

ProPEX EP Elbow



ProPEX EP Elbow makes tight 90-degree connections for Uponor PEX tubing in supply and return mains.

Note: ProPEX Tool is required. ProPEX Rings sold separately.



Part No.	Part Description	Pkg. Qty.	Case Qty.
Q4760500	ProPEX EP Elbow, 1/2" PEX x 1/2" PEX	25	100
Q4760750	ProPEX EP Elbow, 3/4" PEX x 3/4" PEX	25	100
Q4761000	ProPEX EP Elbow, 1" PEX x 1" PEX	10	100
Q4761250	ProPEX EP Elbow, 1 1/4" PEX x 1 1/4" PEX	10	100
Q4761500	ProPEX EP Elbow, 1 1/2" PEX x 1 1/2" PEX	10	100
Q4762000	ProPEX EP Elbow, 2" PEX x 2" PEX	5	-

ProPEX Brass Elbow



ProPEX Brass Elbow makes tight 90-degree connections for Uponor PEX tubing in supply and return mains.

Note: ProPEX Tool is required. ProPEX Rings sold separately.

Part No.	Part Description	Pkg. Qty.	Case Qty.
* Q4710500	ProPEX Brass Elbow, 1/2" PEX x 1/2" PEX	25	100
Q4710625	ProPEX Brass Elbow, 5/8" PEX x 5/8" PEX	25	100
* Q4710750	ProPEX Brass Elbow, 3/4" PEX x 3/4" PEX	25	100
* Q4711000	ProPEX Brass Elbow, 1" PEX x 1" PEX	10	100
* Q4712000	ProPEX Brass Elbow, 2" PEX x 2" PEX	5	-

ProPEX DZR Brass Elbow



ProPEX DZR Brass Elbow makes tight 90-degree connections for Uponor PEX tubing in supply and return mains. DZR brass is safe for direct burial in soil.

Note: ProPEX Tool is required. ProPEX Rings sold separately.

Part No.	Part Description	Each Qty.	Pkg. Qty.
◀ * G4711250	ProPEX DZR Brass Elbow, 1 1/4" PEX x 1 1/4" PEX	-	10
◀ * G4711500	ProPEX DZR Brass Elbow, 1 1/2" PEX x 1 1/2" PEX	-	10

* Engineered plastic alternate available in EP section.

◀ Discontinued item; available while quantities last. Please contact Uponor Customer Service for availability. All sales are final.

Uponor Radiant Heating and Cooling Systems

ProPEX Brass Elbow with MIP makes 90-degree connections for 1/2" Uponor PEX tubing to 1/2" male NPT thread.

Note: ProPEX Tool is required. ProPEX Rings sold separately.

ProPEX Brass Elbow with MIP



LF	Part No.	Part Description	Pkg. Qty.	Case Qty.
	Q4125050	ProPEX Brass Elbow, 1/2" PEX x 1/2" MIP	25	100

ProPEX EP Tee makes diverting connections for Uponor PEX tubing in supply and return mains. Branch size is listed last in the part description.

Note: ProPEX Tool is required. ProPEX Rings sold separately.

ProPEX EP Tee



NEW	Part No.	Part Description	Pkg. Qty.	Case Qty.
	Q4755050	ProPEX EP Tee, 1/2" PEX x 1/2" PEX x 1/2" PEX	25	100
	Q4757575	ProPEX EP Tee, 3/4" PEX x 3/4" PEX x 3/4" PEX	25	100
	Q4751010	ProPEX EP Tee, 1" PEX x 1" PEX x 1" PEX	10	100
	Q4751313	ProPEX EP Tee, 1 1/4" PEX x 1 1/4" PEX x 1 1/4" PEX	10	100
	Q4751515	ProPEX EP Tee, 1 1/2" PEX x 1 1/2" PEX x 1 1/2" PEX	10	100
	Q4752000	ProPEX EP Tee, 2" PEX x 2" PEX x 2" PEX	5	-

ProPEX Brass Tee makes diverting connections for Uponor PEX tubing in supply and return mains. Branch size is listed last in the part description.

Note: ProPEX Tool is required. ProPEX Rings sold separately.

ProPEX Brass Tee



	Part No.	Part Description	Pkg. Qty.	Case Qty.
*	Q4705050	ProPEX Brass Tee, 1/2" PEX x 1/2" PEX x 1/2" PEX	25	100
*	Q4707575	ProPEX Brass Tee, 3/4" PEX x 3/4" PEX x 3/4" PEX	25	100
*	Q4701010	ProPEX Brass Tee, 1" PEX x 1" PEX x 1" PEX	10	100
*	Q4702000	ProPEX Brass Tee, 2" PEX x 2" PEX x 2" PEX	5	-

ProPEX DZR Brass Tee makes diverting connections for Uponor PEX tubing in supply and return mains. Branch size is listed last in the part description. DZR brass is safe for direct burial in soil.

Note: ProPEX Tool is required. ProPEX Rings sold separately.

ProPEX DZR Brass Tee



	Part No.	Part Description	Each Qty.	Pkg. Qty.
◀ *	G4701250	ProPEX DZR Brass Tee, 1 1/4" PEX x 1 1/4" PEX x 1 1/4"	-	10
◀ *	G4701500	ProPEX DZR Brass Tee, 1 1/2" PEX x 1 1/2" PEX x 1 1/2"	-	10

LF Lead-free alternative available in lead-free section.

***** Engineered plastic alternate available in EP section.

◀ Discontinued item; available while quantities last. Please contact Uponor Customer Service for availability. All sales are final.

Uponor Radiant Heating and Cooling Systems

ProPEX EP Reducing Tee

ProPEX EP Reducing Tee makes diverting connections for Uponor PEX tubing in supply and return mains. Branch size is listed last in the part description.

Note: ProPEX Tool is required. ProPEX Rings sold separately.



Part No.	Part Description	Pkg. Qty.	Case Qty.
Q4755575	ProPEX EP Reducing Tee, 1/2" PEX x 1/2" PEX x 3/4" PEX	25	100
Q4757555	ProPEX EP Reducing Tee, 3/4" PEX x 1/2" PEX x 1/2" PEX	25	100
Q4757557	ProPEX EP Reducing Tee, 3/4" PEX x 1/2" PEX x 3/4" PEX	25	100
Q4757550	ProPEX EP Reducing Tee, 3/4" PEX x 3/4" PEX x 1/2" PEX	25	100
Q4757710	ProPEX EP Reducing Tee, 3/4" PEX x 3/4" PEX x 1" PEX	10	100
Q4751775	ProPEX EP Reducing Tee, 1" PEX x 3/4" PEX x 3/4" PEX	10	100
Q4751751	ProPEX EP Reducing Tee, 1" PEX x 3/4" PEX x 1" PEX	10	100
Q4751150	ProPEX EP Reducing Tee, 1" PEX x 1" PEX x 1/2" PEX	10	100
Q4751175	ProPEX EP Reducing Tee, 1" PEX x 1" PEX x 3/4" PEX	10	100
Q4751317	ProPEX EP Reducing Tee, 1 1/4" PEX x 1" PEX x 3/4" PEX	10	100
Q4751311	ProPEX EP Reducing Tee, 1 1/4" PEX x 1" PEX x 1" PEX	10	100
Q4751337	ProPEX EP Reducing Tee, 1 1/4" PEX x 1 1/4" PEX x 3/4" PEX	10	100
Q4751331	ProPEX EP Reducing Tee, 1 1/4" PEX x 1 1/4" PEX x 1" PEX	10	100
Q4751517	ProPEX EP Reducing Tee, 1 1/2" PEX x 1" PEX x 3/4" PEX	10	100
Q4751511	ProPEX EP Reducing Tee, 1 1/2" PEX x 1" PEX x 1" PEX	10	100
NEW Q4751531	ProPEX EP Reducing Tee, 1 1/2" PEX x 1 1/4" PEX x 1" PEX	10	100
NEW Q4751533	ProPEX EP Reducing Tee, 1 1/2" PEX x 1 1/4" PEX x 1 1/4" PEX	10	100
NEW Q4751537	ProPEX EP Reducing Tee, 1 1/2" PEX x 1 1/4" PEX x 3/4" PEX	10	100
Q4751557	ProPEX EP Reducing Tee, 1 1/2" PEX x 1 1/2" PEX x 3/4" PEX	10	100
Q4751551	ProPEX EP Reducing Tee, 1 1/2" PEX x 1 1/2" PEX x 1" PEX	10	100
Q4751553	ProPEX EP Reducing Tee, 1 1/2" PEX x 1 1/2" PEX x 1 1/4" PEX	10	100
NEW Q4752051	ProPEX EP Reducing Tee, 2" PEX x 1 1/2" PEX x 1" PEX	5	-
NEW Q4752210	ProPEX EP Reducing Tee, 2" PEX x 2" PEX x 1" PEX	5	-
NEW Q4752215	ProPEX EP Reducing Tee, 2" PEX x 2" PEX x 1 1/2" PEX	5	-
NEW Q4752275	ProPEX EP Reducing Tee, 2" PEX x 2" PEX x 3/4" PEX	5	-

Uponor Radiant Heating and Cooling Systems

ProPEX Brass Reducing Tee makes diverting connections for Uponor PEX tubing in supply and return mains. Branch size is listed last in the part description.

Note: ProPEX Tool is required. ProPEX Rings sold separately.

Part No.	Part Description	Pkg. Qty.	Case Qty.
* Q4705575	ProPEX Brass Reducing Tee, 1/2" PEX x 1/2" PEX x 3/4" PEX	25	100
* Q4707555	ProPEX Brass Reducing Tee, 3/4" PEX x 1/2" PEX x 1/2" PEX	25	100
* Q4707557	ProPEX Brass Reducing Tee, 3/4" PEX x 1/2" PEX x 3/4" PEX	25	100
* Q4707550	ProPEX Brass Reducing Tee, 3/4" PEX x 3/4" PEX x 1/2" PEX	25	100
* Q4707710	ProPEX Brass Reducing Tee, 3/4" PEX x 3/4" PEX x 1" PEX	10	100
* Q4701775	ProPEX Brass Reducing Tee, 1" PEX x 3/4" PEX x 3/4" PEX	10	100
* Q4701751	ProPEX Brass Reducing Tee, 1" PEX x 3/4" PEX x 1" PEX	10	100
* Q4701150	ProPEX Brass Reducing Tee, 1" PEX x 1" PEX x 1/2" PEX	10	100
* Q4701175	ProPEX Brass Reducing Tee, 1" PEX x 1" PEX x 3/4" PEX	10	100
* Q4702575	ProPEX Brass Reducing Tee, 2" PEX x 1 1/2" PEX x 3/4" PEX	5	-
* Q4702051	ProPEX Brass Reducing Tee, 2" PEX x 1 1/2" PEX x 1" PEX	5	-
* Q4702053	ProPEX Brass Reducing Tee, 2" PEX x 1 1/2" PEX x 1 1/4" PEX	5	-
* Q4702055	ProPEX Brass Reducing Tee, 2" PEX x 1 1/2" PEX x 1 1/2" PEX	5	-
* Q4702275	ProPEX Brass Reducing Tee, 2" PEX x 2" PEX x 3/4" PEX	5	-
* Q4702210	ProPEX Brass Reducing Tee, 2" PEX x 2" PEX x 1" PEX	5	-
* Q4702213	ProPEX Brass Reducing Tee, 2" PEX x 2" PEX x 1 1/4" PEX	5	-
* Q4702215	ProPEX Brass Reducing Tee, 2" PEX x 2" PEX x 1 1/2" PEX	5	-

ProPEX Brass Reducing Tee



ProPEX DZR Brass Reducing Tee makes diverting connections for Uponor PEX tubing in supply and return mains. Branch size is listed last in the part description. DZR Brass Fittings are safe for direct burial in soil.

Note: ProPEX Tool is required. ProPEX Rings sold separately.

Part No.	Part Description	Each Qty.	Pkg. Qty.
* G4701317	ProPEX DZR Brass Reducing Tee, 1 1/4" PEX x 1" PEX x 3/4" PEX	-	10
* G4701311	ProPEX DZR Brass Reducing Tee, 1 1/4" PEX x 1" PEX x 1" PEX	-	10
* G4701337	ProPEX DZR Brass Reducing Tee, 1 1/4" PEX x 1 1/4" PEX x 3/4" PEX	-	10
* G4701331	ProPEX DZR Brass Reducing Tee, 1 1/4" PEX x 1 1/4" PEX x 1" PEX	-	10
* G4701537	ProPEX DZR Brass Reducing Tee, 1 1/2" PEX x 1 1/4" PEX x 3/4" PEX	-	10
* G4701531	ProPEX DZR Brass Reducing Tee, 1 1/2" PEX x 1 1/4" PEX x 1" PEX	-	10
* G4701533	ProPEX DZR Brass Reducing Tee, 1 1/2" PEX x 1 1/4" PEX x 1 1/4" PEX	-	10
* G4701557	ProPEX DZR Brass Reducing Tee, 1 1/2" PEX x 1 1/2" PEX x 3/4" PEX	-	10
* G4701551	ProPEX DZR Brass Reducing Tee, 1 1/2" PEX x 1 1/2" PEX x 1" PEX	-	10
* G4701553	ProPEX DZR Brass Reducing Tee, 1 1/2" PEX x 1 1/2" PEX x 1 1/4" PEX	-	10

ProPEX DZR Brass Reducing Tee



* Engineered plastic alternate available in EP section.

◀ Discontinued item; available while quantities last. Please contact Uponor Customer Service for availability. All sales are final.

Uponor Radiant Heating and Cooling Systems

ProPEX Brass Male Threaded Adapter

ProPEX Brass Male Threaded Adapter connects Uponor PEX tubing to male NPT threads and are intended as transition fittings from metal to PEX.

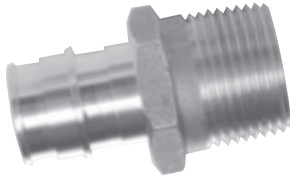
Note: ProPEX tool is required. ProPEX Rings sold separately.

	Part No.	Part Description	Pkg. Qty.	Case Qty.
LF ◀	Q4525050	ProPEX Brass Male Threaded Adapter, 1/2" PEX x 1/2" NPT	25	100
	Q4525075	ProPEX Brass Male Threaded Adapter, 1/2" PEX x 3/4" NPT	25	100
	Q4526375	ProPEX Brass Male Threaded Adapter, 5/8" PEX x 3/4" NPT	10	100
LF ◀	Q4527575	ProPEX Brass Male Threaded Adapter, 3/4" PEX x 3/4" NPT	25	100
	Q4527510	ProPEX Brass Male Threaded Adapter, 3/4" PEX x 1" NPT	10	100
	Q4521075	ProPEX Brass Male Threaded Adapter, 1" PEX x 3/4" NPT	10	100
LF ◀	Q4521010	ProPEX Brass Male Threaded Adapter, 1" PEX x 1" NPT	10	100
	Q4522020	ProPEX Brass Male Threaded Adapter, 2" PEX x 2" NPT	5	-

ProPEX DZR Brass Male Threaded Adapter

ProPEX DZR Brass Male Threaded Adapter connects Uponor PEX tubing to male NPT threads and are intended as transition fittings from metal to PEX. DZR Brass Fittings are safe for direct burial in soil.

Note: ProPEX Tool is required. ProPEX Rings sold separately.



	Part No.	Part Description	Each Qty.	Pkg. Qty.
LF ◀	G4527575	ProPEX DZR Brass Male Threaded Adapter, 3/4" PEX x 3/4" NPT	-	10
LF ◀	G4521010	ProPEX DZR Brass Male Threaded Adapter, 1" PEX x 1" NPT	-	10
LF ◀	G4521313	ProPEX DZR Brass Male Threaded Adapter, 1 1/4" PEX x 1 1/4" NPT	-	10
◀	G4521515	ProPEX DZR Brass Male Threaded Adapter, 1 1/2" PEX x 1 1/2" NPT	-	10
◀	G4522020	ProPEX DZR Brass Male Threaded Adapter, 2" PEX x 2" NPT	-	5

ProPEX Brass Female Threaded Adapter

ProPEX Brass Female Threaded Adapter connects Uponor PEX tubing to female NPT threads and are intended as transition fittings from metal to PEX.

Note: ProPEX Tool is required. ProPEX Rings sold separately.



	Part No.	Part Description	Pkg. Qty.	Case Qty.
LF ◀	Q4575050	ProPEX Brass Female Threaded Adapter, 1/2" PEX x 1/2" NPT	25	100
	Q4575075	ProPEX Brass Female Threaded Adapter, 1/2" PEX x 3/4" NPT	25	100
	Q4576375	ProPEX Brass Female Threaded Adapter, 5/8" PEX x 3/4" NPT	10	100
LF ◀	Q4577575	ProPEX Brass Female Threaded Adapter, 3/4" PEX x 3/4" NPT	25	100
	Q4577510	ProPEX Brass Female Threaded Adapter, 3/4" PEX x 1" NPT	10	100
	Q4571075	ProPEX Brass Female Threaded Adapter, 1" PEX x 3/4" NPT	10	100
LF ◀	Q4571010	ProPEX Brass Female Threaded Adapter, 1" PEX x 1" NPT	10	100
	Q4572020	ProPEX Brass Female Threaded Adapter, 2" PEX x 2" NPT	5	-

LF Lead-free alternative available in lead-free section.

◀ Discontinued item; available while quantities last. Please contact Uponor Customer Service for availability. All sales are final.

Uponor Radiant Heating and Cooling Systems

ProPEX DZR Brass Female Threaded Adapter connects Uponor PEX tubing to female NPT threads and is intended as a transition fitting from metal to PEX. DZR Brass Fittings are safe for direct burial in soil.

Note: ProPEX Tool is required. ProPEX Rings sold separately.

ProPEX DZR Brass Female Threaded Adapter

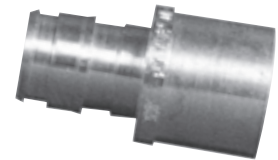


	Part No.	Part Description	Each Qty.	Pkg. Qty.
LF	G4577575	ProPEX DZR Brass Female Threaded Adapter, 3/4" PEX x 3/4" NPT	-	10
LF	G4571010	ProPEX DZR Brass Female Threaded Adapter, 1" PEX x 1" NPT	-	10
LF	G4571313	ProPEX DZR Brass Female Threaded Adapter, 1 1/4" PEX x 1 1/4" NPT	-	10
LF	G4571515	ProPEX DZR Brass Female Threaded Adapter, 1 1/2" PEX x 1 1/2" NPT	-	10

ProPEX Brass Sweat Adapter transitions Uponor PEX tubing to copper pipe.

Note: ProPEX Tool is required. ProPEX Rings sold separately.

ProPEX Brass Sweat Adapter



	Part No.	Part Description	Pkg. Qty.	Case Qty.
LF	Q4515050	ProPEX Brass Sweat Adapter, 1/2" PEX x 1/2" Copper	25	100
LF	Q4515075	ProPEX Brass Sweat Adapter, 1/2" PEX x 3/4" Copper	25	100
	Q4516350	ProPEX Brass Sweat Adapter, 5/8" PEX x 1/2" Copper	10	100
	Q4516375	ProPEX Brass Sweat Adapter, 5/8" PEX x 3/4" Copper	10	100
	Q4517550	ProPEX Brass Sweat Adapter, 3/4" PEX x 1/2" Copper	25	100
LF	Q4517575	ProPEX Brass Sweat Adapter, 3/4" PEX x 3/4" Copper	25	100
	Q4517510	ProPEX Brass Sweat Adapter, 3/4" PEX x 1" Copper	10	100
LF	Q4511010	ProPEX Brass Sweat Adapter, 1" PEX x 1" Copper	10	100
	Q4512020	ProPEX Brass Sweat Adapter, 2" PEX x 2" Copper	5	-

ProPEX DZR Brass Sweat Adapter transitions Uponor PEX tubing to copper pipe. DZR Brass Fittings are safe for direct burial in the soil.

Note: ProPEX Tool is required. ProPEX Rings sold separately.

ProPEX DZR Brass Sweat Adapter



	Part No.	Part Description	Each Qty.	Pkg. Qty.
LF	G4517575	ProPEX DZR Brass Sweat Adapter, 3/4" PEX x 3/4" Copper	-	10
LF	G4511010	ProPEX DZR Brass Sweat Adapter, 1" PEX x 1" Copper	-	10
LF	G4511313	ProPEX DZR Brass Sweat Adapter, 1 1/4" PEX x 1 1/4" Copper	-	10
LF	G4511515	ProPEX DZR Brass Sweat Adapter, 1 1/2" PEX x 1 1/2" Copper	-	10

LF Lead-free alternative available in lead-free section.

Discontinued item; available while quantities last. Please contact Uponor Customer Service for availability. All sales are final.

Uponor Radiant Heating and Cooling Systems

ProPEX Brass Fitting Adapter

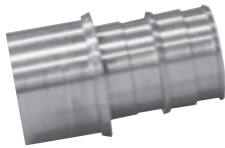


ProPEX Brass Fitting Adapter transitions Uponor PEX tubing to copper fittings.

Note: ProPEX Tool is required. ProPEX Rings sold separately.

	Part No.	Part Description	Pkg. Qty.	Case Qty.
LF	Q4505050	ProPEX Brass Fitting Adapter, 1/2" PEX x 1/2" Copper	25	100
LF	Q4505075	ProPEX Brass Fitting Adapter, 1/2" PEX x 3/4" Copper	25	100
	Q4506350	ProPEX Brass Fitting Adapter, 5/8" PEX x 1/2" Copper	10	100
	Q4506375	ProPEX Brass Fitting Adapter, 5/8" PEX x 3/4" Copper	10	100
	Q4507550	ProPEX Brass Fitting Adapter, 3/4" PEX x 1/2" Copper	25	100
LF	Q4507575	ProPEX Brass Fitting Adapter, 3/4" PEX x 3/4" Copper	25	100
	Q4507510	ProPEX Brass Fitting Adapter, 3/4" PEX x 1" Copper	10	100
LF	Q4501010	ProPEX Brass Fitting Adapter, 1" PEX x 1" Copper	10	100
	Q4502020	ProPEX Brass Fitting Adapter, 2" PEX x 2" Copper	5	-

ProPEX DZR Brass Fitting Adapter



ProPEX DZR Brass Fitting Adapter transitions Uponor PEX tubing to copper fittings. DZR Brass Fittings are safe for direct burial in soil.

Note: ProPEX Tool is required. ProPEX Rings sold separately.

	Part No.	Part Description	Each Qty.	Pkg. Qty.
LF	G4501313	ProPEX DZR Brass Fitting Adapter, 1 1/4" PEX x 1 1/4" Copper	-	10
	G4501515	ProPEX DZR Brass Fitting Adapter, 1 1/2" PEX x 1 1/2" Copper	-	10

ProPEX EP Plug



ProPEX EP Plug permanently terminates the end of Uponor PEX tubing.

Note: ProPEX tool is required. ProPEX Rings sold separately.

	Part No.	Part Description	Pkg. Qty.	Case Qty.
	Q4350500	ProPEX EP Plug for 1/2" PEX	25	100
	Q4350750	ProPEX EP Plug for 3/4" PEX	25	100
	Q4351000	ProPEX EP Plug for 1" PEX	10	100
NEW	Q4351250	ProPEX EP Plug for 1 1/4" PEX	10	100
NEW	Q4351500	ProPEX EP Plug for 1 1/2" PEX	10	100
NEW	Q4352000	ProPEX EP Plug for 2" PEX	5	50

ProPEX Brass Plug



ProPEX Brass Plug permanently terminates the end of Uponor PEX tubing.

Note: ProPEX Tool is required. ProPEX Rings sold separately.

	Part No.	Part Description	Pkg. Qty.	Case Qty.
★	Q4535050	ProPEX Brass Plug for 1/2" PEX	25	100
	Q4536363	ProPEX Brass Plug for 5/8" PEX	10	100
★	Q4537575	ProPEX Brass Plug for 3/4" PEX	25	100
★	Q4531000	ProPEX Brass Plug for 1" PEX	10	100
★	Q4532000	ProPEX Brass Plug for 2" PEX	5	-

LF Lead-free alternative available in lead-free section.

★ Engineered plastic alternate available in EP section.

◀ Discontinued item; available while quantities last. Please contact Uponor Customer Service for availability. All sales are final.

Uponor Radiant Heating and Cooling Systems

Tubing Transition Fittings

The QS-style Coupling Nipple (brass) and the appropriate fitting assembly connect $\frac{5}{16}$ ", $\frac{1}{2}$ ", $\frac{5}{8}$ " or $\frac{3}{4}$ " Uponor tubing together.

Part No.	Part Description	Each Qty.	Pkg. Qty.
A4322020	QS-style Coupling Nipple, R20 x R20	-	10
A4322525	QS-style Coupling Nipple, R25 x R25 (for $\frac{3}{4}$ " tubing only)	-	10

QS-style Coupling Nipple



The QS-style Conversion Nipple (brass) and the appropriate fitting connect $\frac{5}{16}$ ", $\frac{1}{2}$ ", $\frac{5}{8}$ " or $\frac{3}{4}$ " Uponor tubing to $\frac{1}{2}$ ", $\frac{3}{4}$ " and 1" NPT.

Part No.	Part Description	Each Qty.	Pkg. Qty.
A4322050	QS-style Conversion Nipple, R20 x $\frac{1}{2}$ " NPT	-	10
A4322075	QS-style Conversion Nipple, R20 x $\frac{3}{4}$ " NPT	-	10
A4322575	QS-style Conversion Nipple, R25 x $\frac{3}{4}$ " NPT (for $\frac{3}{4}$ " tubing only)	-	10
A4322510	QS-style Conversion Nipple, R25 x 1" NPT, (for $\frac{3}{4}$ " tubing only)	-	10

QS-style Conversion Nipple



Use R20 QS-style Copper Adapter (R20 or R25) and appropriate QS-style Fitting Assembly to transition Uponor PEX tubing to $\frac{1}{2}$ " and $\frac{3}{4}$ " copper pipe.

Part No.	Part Description	Each Qty.	Pkg. Qty.
A4332050	QS-style Copper Adapter, R20 x $\frac{1}{2}$ " Copper	-	10
A4332075	QS-style Copper Adapter, R20 x $\frac{3}{4}$ " Copper	-	10
A4332575	QS-style Copper Adapter, R25 x $\frac{3}{4}$ " Copper (for $\frac{3}{4}$ " tubing only)	-	10

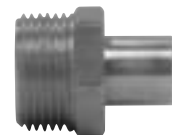
QS-style Copper Adapter



Use R20 QS-style Copper Fitting Adapter and appropriate QS-style Fitting Assembly to transition Uponor PEX tubing to $\frac{1}{2}$ " and $\frac{3}{4}$ " copper fittings.

Part No.	Part Description	Each Qty.	Pkg. Qty.
A4342050	QS-style Copper Fitting Adapter, R20 x $\frac{1}{2}$ " Copper	-	10
A4342075	QS-style Copper Fitting Adapter, R20 x $\frac{3}{4}$ " Copper	-	10
A4342575	QS-style Copper Fitting Adapter, R25 X $\frac{3}{4}$ " Copper (for $\frac{3}{4}$ " tubing only)	-	10
A4342510	QS-style Copper Fitting Adapter, R25 X 1" Copper (for $\frac{3}{4}$ " tubing only)	-	10

QS-style Copper Fitting Adapter



Use $\frac{5}{16}$ " Repair Coupling to connect $\frac{5}{16}$ " Wirsbo hePEX tubing together.

Note: One-piece Repair Coupling comes as an assembly. No other fittings are necessary.

Part No.	Part Description	Each Qty.	Pkg. Qty.
A4010313	$\frac{5}{16}$ " Repair Coupling	-	10

Note: For all other sizes of tubing, see ProPEX EP Coupling section on page 33. EP Couplings are suitable for direct burial.

Repair Coupling



Uponor Radiant Heating and Cooling Systems

Baseboard Fittings

QS-style Baseboard Elbow and Tee



QS-style Baseboard Elbow (brass) connects 1/2", 5/8" and 3/4" Uponor PEX tubing to 3/4-inch copper baseboard with the appropriate QS-style fitting assembly.

Note: QS-style Fitting Assembly is required.

Part No.	Part Description	Each Qty.	Pkg. Qty.
A4382075	QS-style Baseboard Elbow, R20 X 3/4" Copper Adapter	-	10
A4372075	QS-style Baseboard Elbow, R20 x 3/4" Copper Fitting Adapter	-	10

QS-style Baseboard Tee (brass) connects 1/2" and 5/8" Uponor PEX tubing to 3/4-inch copper baseboard (includes 1/8-inch threads for air vent).

Part No.	Part Description	Each Qty.	Pkg. Qty.
A4392075	QS-style Baseboard Tee, R20 x 3/4" Copper Adapter	-	10

ProPEX Baseboard Elbow and Tee



ProPEX Baseboard Elbow (brass) connects 1/2", 5/8" and 3/4" Uponor PEX tubing products to 3/4-inch copper baseboard.

Note: ProPEX Tool is required. ProPEX Rings sold separately.

Part No.	Part Description	Each Qty.	Pkg. Qty.
Q4385075	ProPEX Baseboard Elbow, 1/2" PEX x 3/4" Copper Adapter	-	10
Q4386375	ProPEX Baseboard Elbow, 5/8" PEX x 3/4" Copper Adapter	-	10
Q4387575	ProPEX Baseboard Elbow, 3/4" PEX x 3/4" Copper Adapter	-	10
Q4375075	ProPEX Baseboard Elbow, 1/2" PEX x 3/4" Copper Fitting Adapter	-	10
Q4376375	ProPEX Baseboard Elbow, 5/8" PEX x 3/4" Copper Fitting Adapter	-	10
Q4377575	ProPEX Baseboard Elbow, 3/4" PEX x 3/4" Copper Fitting Adapter	-	10

ProPEX Baseboard Tee (brass) connects 1/2" and 5/8" Uponor PEX tubing products to 3/4-inch copper baseboard (includes 1/8-inch threads for air vent). Air vent is not included.

Part No.	Part Description	Each Qty.	Pkg. Qty.
Q4395075	ProPEX Baseboard Tee, 1/2" PEX x 3/4" Copper Adapter	-	10
Q4396375	ProPEX Baseboard Tee, 5/8" PEX x 3/4" Copper Adapter	-	10
Q4397575	ProPEX Baseboard Tee, 3/4" PEX x 3/4" Copper Adapter	-	10

MLC Press Fittings

MLC Press Fitting Brass Coupling



MLC Press Fitting Brass Coupling connects two pieces of MLC tubing.

Note: The Mini-Press Battery Tool or MLC Press Fitting Manual Tool is required.

Part No.	Part Description	Each Qty.	Pkg. Qty.
D4545050	MLC Press Fitting Brass Coupling, 1/2" MLC Tubing x 1/2" MLC Tubing	-	10
D4546363	MLC Press Fitting Brass Coupling, 5/8" MLC Tubing x 5/8" MLC Tubing	-	10
D4547575	MLC Press Fitting Brass Coupling, 3/4" MLC Tubing x 3/4" MLC Tubing	-	10
D4541010	MLC Press Fitting Brass Coupling, 1" MLC Tubing x 1" MLC Tubing	-	10

Uponor Radiant Heating and Cooling Systems

MLC Press Fitting Elbow makes 90-degree connections for MLC tubing.

Note: The Mini-Press Battery Tool or MLC Press Fitting Manual Tool is required.

MLC Press Fitting Brass Elbow



Part No.	Part Description	Each Qty.	Pkg. Qty.
D4710625	MLC Press Fitting Brass Elbow, 5/8" MLC Tubing x 5/8" MLC Tubing	-	10
D4710750	MLC Press Fitting Brass Elbow, 3/4" MLC Tubing x 3/4" MLC Tubing	-	10
D4711000	MLC Press Fitting Brass Elbow, 1" MLC Tubing x 1" MLC Tubing	-	10

MLC Press Fitting Brass Tee makes diverting connections for MLC tubing in supply and return mains.

Note: The Mini-Press Battery Tool or MLC Press Fitting Manual Tool is required.

MLC Press Fitting Brass Tee



Part No.	Part Description	Each Qty.	Pkg. Qty.
D4707575	MLC Press Fitting Brass Tee, 3/4" MLC Tubing x 3/4" MLC Tubing x 3/4" MLC Tubing	-	10
D4701010	MLC Press Fitting Brass Tee, 1" MLC Tubing x 1" MLC Tubing x 1" MLC Tubing	-	10
D4707550	MLC Press Fitting Brass Reducing Tee, 3/4" MLC Tubing x 3/4" MLC Tubing x 1/2" MLC Tubing	-	10
D4701150	MLC Press Fitting Brass Reducing Tee, 1" MLC Tubing x 1" MLC Tubing x 1/2" MLC Tubing	-	10
D4701175	MLC Press Fitting Brass Reducing Tee, 1" MLC Tubing x 1" MLC Tubing x 3/4" MLC Tubing	-	10

MLC Press Fitting Brass Male NPT Threaded Adapter connects MLC tubing to male NPT threads.

Note: The Mini-Press Battery Tool or MLC Press Fitting Manual Tool is required.

MLC Press Fitting Brass Male Threaded Adapter



Part No.	Part Description	Each Qty.	Pkg. Qty.
D4525075	MLC Press Fitting Brass Male Threaded Adapter, 1/2" MLC Tubing x 3/4" NPT	-	10
D4526375	MLC Press Fitting Brass Male Threaded Adapter, 5/8" MLC Tubing x 3/4" NPT	-	10
D4527575	MLC Press Fitting Brass Male Threaded Adapter, 3/4" MLC Tubing x 3/4" NPT	-	10
D4527510	MLC Press Fitting Brass Male Threaded Adapter, 3/4" MLC Tubing x 1" NPT	-	10
D4521010	MLC Press Fitting Brass Male Threaded Adapter, 1" MLC Tubing x 1" NPT	-	10

MLC Press Fitting Brass Female NPT Threaded Adapter connects MLC tubing to female NPT threads.

Note: The Mini-Press Battery Tool or MLC Press Fitting Manual Tool is required.

MLC Press Fitting Brass Female Threaded Adapter



Part No.	Part Description	Each Qty.	Pkg. Qty.
D4575075	MLC Press Fitting Brass Female Threaded Adapter, 1/2" MLC Tubing x 3/4" NPT	-	10
D4576375	MLC Press Fitting Brass Female Threaded Adapter, 5/8" MLC Tubing x 3/4" NPT	-	10
D4577575	MLC Press Fitting Brass Female Threaded Adapter, 3/4" MLC Tubing x 3/4" NPT	-	10
D4577510	MLC Press Fitting Brass Female Threaded Adapter, 3/4" MLC Tubing x 1" NPT	-	10
D4571010	MLC Press Fitting Brass Female Threaded Adapter, 1" MLC Tubing x 1" NPT	-	10

Uponor Radiant Heating and Cooling Systems

MLC Press Fitting Brass Sweat Adapter



MLC Press Fitting Brass Sweat Adapter transitions MLC tubing to copper pipe. Fittings come disassembled for sweating.

Note: The Mini-Press Battery Tool or MLC Press Fitting Manual Tool is required.

Part No.	Part Description	Each Qty.	Pkg. Qty.
D4515050	MLC Press Fitting Brass Sweat Adapter, 1/2" MLC Tubing x 1/2" Copper	-	10
D4515075	MLC Press Fitting Brass Sweat Adapter, 1/2" MLC Tubing x 3/4" Copper	-	10
D4516375	MLC Press Fitting Brass Sweat Adapter, 5/8" MLC Tubing x 3/4" Copper	-	10
D4517575	MLC Press Fitting Brass Sweat Adapter, 3/4" MLC Tubing x 3/4" Copper	-	10
D4517510	MLC Press Fitting Brass Sweat Adapter, 3/4" MLC Tubing x 1" Copper	-	10
D4511010	MLC Press Fitting Brass Sweat Adapter, 1" MLC Tubing x 1" Copper	-	10

MLC Press Fitting Brass Fitting Adapter



MLC Press Fitting Brass Fitting Adapter transitions MLC tubing to copper fittings. Fittings come disassembled for sweating.

Note: The Mini-Press Battery Tool or MLC Press Fitting Manual Tool is required.

Part No.	Part Description	Each Qty.	Pkg. Qty.
D4505050	MLC Press Fitting Brass Fitting Adapter, 1/2" MLC Tubing x 1/2" Copper	-	10
D4505075	MLC Press Fitting Brass Fitting Adapter, 1/2" MLC Tubing x 3/4" Copper	-	10
D4506375	MLC Press Fitting Brass Fitting Adapter, 5/8" MLC Tubing x 3/4" Copper	-	10
D4507575	MLC Press Fitting Brass Fitting Adapter, 3/4" MLC Tubing x 3/4" Copper	-	10
D4507510	MLC Press Fitting Brass Fitting Adapter, 3/4" MLC Tubing x 1" Copper	-	10
D4501010	MLC Press Fitting Brass Fitting Adapter, 1" MLC Tubing x 1" Copper	-	10

MLC Press Fitting Manifold Adapter



MLC Press Fitting Manifold Adapter transitions R32 manifold connections to 5/8", 3/4" and 1" MLC tubing.

Note: The Mini-Press Battery Tool or MLC Press Fitting Manual Tool is required.

Part No.	Part Description	Each Qty.	Pkg. Qty.
D4143263	MLC Press Fitting Manifold Straight Adapter, R32 x 5/8" MLC	-	10
D4143275	MLC Press Fitting Manifold Straight Adapter, R32 x 3/4" MLC	-	10
D4143210	MLC Press Fitting Manifold Straight Adapter, R32 x 1" MLC	-	10
D4153263	MLC Press Fitting Manifold Elbow Adapter, R32 x 5/8" MLC	-	10
D4153275	MLC Press Fitting Manifold Elbow Adapter, R32 x 3/4" MLC	-	10
D4153210	MLC Press Fitting Manifold Elbow Adapter, R32 x 1" MLC	-	10

Uponor Radiant Heating and Cooling Systems

MLC Press Fitting Baseboard Elbow connects $\frac{1}{2}$ ", $\frac{5}{8}$ " and $\frac{3}{4}$ " MLC tubing to $\frac{3}{4}$ -inch copper baseboard. Fittings come disassembled for sweating.

Note: The Mini-Press Battery Tool or MLC Press Fitting Manual Tool is required.

Part No.	Part Description	Each Qty.	Pkg. Qty.
D4385075	MLC Press Fitting Baseboard Elbow, $\frac{1}{2}$ " MLC Tubing x $\frac{3}{4}$ " Copper Adapter	-	10
D4386375	MLC Press Fitting Baseboard Elbow, $\frac{5}{8}$ " MLC Tubing x $\frac{3}{4}$ " Copper Adapter	-	10
D4387575	MLC Press Fitting Baseboard Elbow, $\frac{3}{4}$ " MLC Tubing x $\frac{3}{4}$ " Copper Adapter	-	10
D4375075	MLC Press Fitting Baseboard Elbow, $\frac{1}{2}$ " MLC Tubing x $\frac{3}{4}$ " Copper Fitting Adapter	-	10
D4376375	MLC Press Fitting Baseboard Elbow, $\frac{5}{8}$ " MLC Tubing x $\frac{3}{4}$ " Copper Fitting Adapter	-	10
D4377575	MLC Press Fitting Baseboard Elbow, $\frac{3}{4}$ " MLC Tubing x $\frac{3}{4}$ " Copper Fitting Adapter	-	10

The MLC Press Fitting Baseboard Tee connects $\frac{1}{2}$ " and $\frac{5}{8}$ " MLC tubing to $\frac{3}{4}$ -inch copper baseboard. Tee features $\frac{1}{8}$ -inch thread for air vent. Fittings come disassembled for soldering.

Part No.	Part Description	Each Qty.	Pkg. Qty.
D4395075	MLC Press Fitting Baseboard Tee, $\frac{1}{2}$ " MLC Tubing x $\frac{3}{4}$ " Copper Adapter	-	10
D4396375	MLC Press Fitting Baseboard Tee, $\frac{5}{8}$ " MLC Tubing x $\frac{3}{4}$ " Copper Adapter	-	10

MLC Press Fitting Baseboard Elbows and Tees



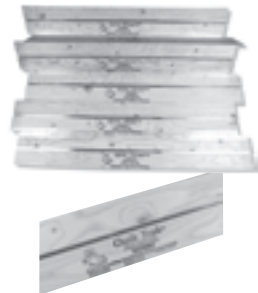
Heat-transfer Panels and Plates

The $\frac{1}{2}$ " x 4' feet plywood panels are attached to an aluminum heat transfer sheet. Use with $\frac{5}{16}$ " Wirsbo hePEX tubing only.

Cut your labor in half with Uponor's fully assembled set of Quik Trak® panels, which consist of six panels fastened together with strapping tape. The panels are staggered (2 inches) on both ends to aid alignment.

Part No.	Part Description	Each Qty.	Pkg. Qty.
A5060701	Quik Trak 7" x 48" Panels	-	10
A5060761	Quik Trak 7" x 48" x 6 Panels (fully assembled set)	1	-

Quik Trak® Panel



Quik Trak Return Panel is designed with a U-shaped groove to complete tubing turns. Each return panel is shipped with a separate aluminum sheet for installation beneath the panel. Use with $\frac{5}{16}$ " Wirsbo hePEX tubing only.

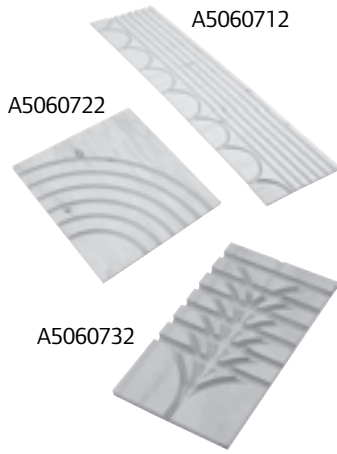
Part No.	Part Description	Each Qty.	Pkg. Qty.
A5060702	Quik Trak 7" x 48" Return Panels	-	10

Quik Trak Return Panel



Uponor Radiant Heating and Cooling Systems

Quik Trak Combo Panel



Quik Trak Combo Panel simplifies installations when multiple tubing runs are needed in a tight space back to the manifold. Each panel is shipped with a separate aluminum sheet for installation beneath the panel. Use with $\frac{3}{16}$ " Wirsbo hePEX tubing only.

Part No.	Part Description	Each Qty.	Pkg. Qty.
A5060712	Quik Trak 12" x 48" Combo Panel, 6 runs with return	-	5
A5060722	Quik Trak 12" x 12" Combo 90, 6 runs	-	5
A5060732	Quik Trak 7" x 12" Combo Access Panel, 6 runs with 1 access	-	6

Joist Trak™ Panel



Use Joist Trak™ extruded aluminum heat transfer panels with $\frac{3}{8}$ " or $\frac{1}{2}$ " Uponor PEX in floor joist applications. Each panel is 4' x 4", and comes packaged 20 per box. It provides easy installation, increased heat transfer and superior comfort.

Part No.	Part Description	Each Qty.	Pkg. Qty.
A5080375	Joist Trak, $\frac{3}{8}$ " Heat Transfer Panel	-	20
A5080500	Joist Trak, $\frac{1}{2}$ " Heat Transfer Panel	-	20