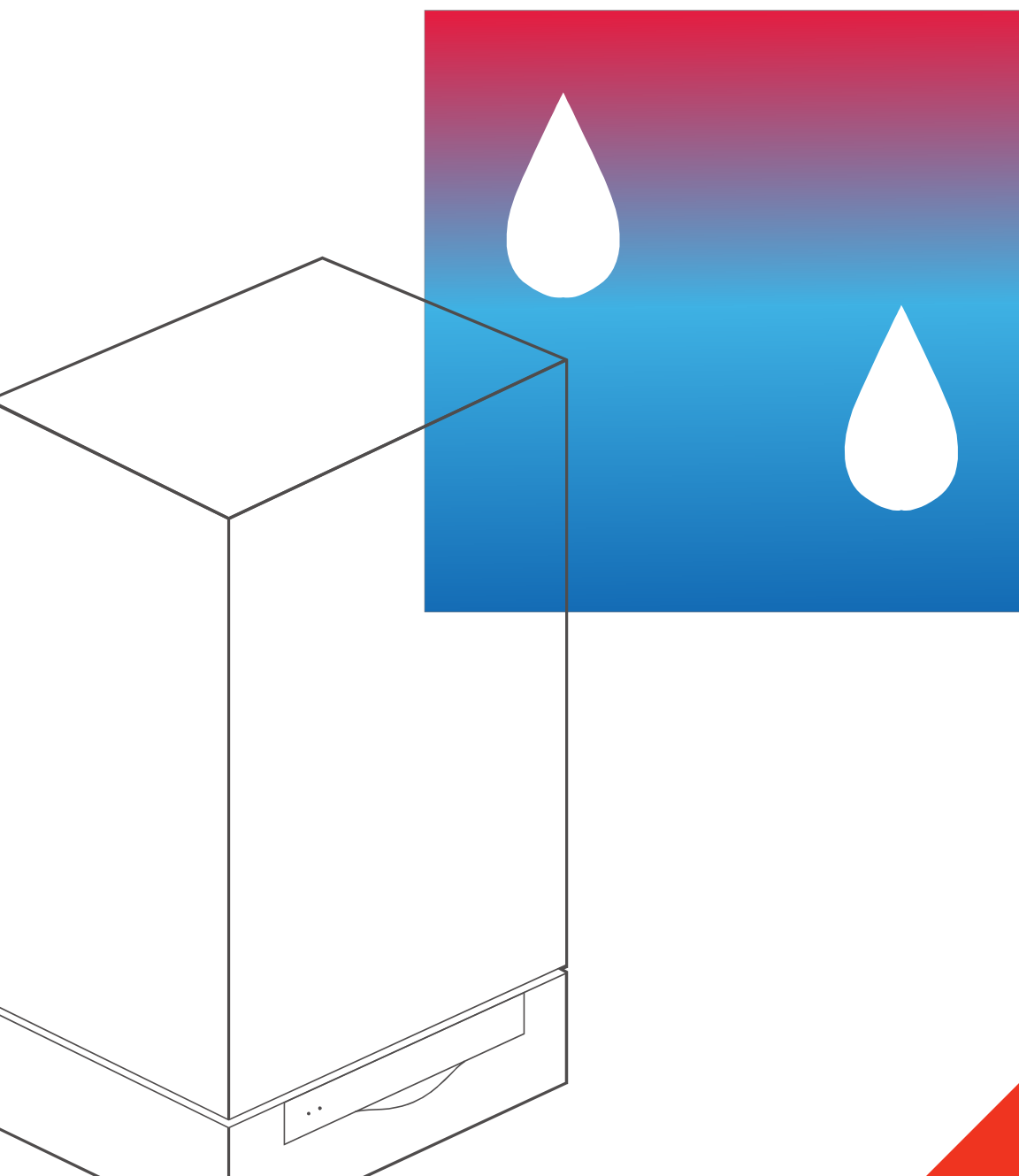


Gas-fired wall-mounted condensing boiler  
Standard heating boiler 31 to 370 MBH  
Multi-boiler installation 60 to 1480 MBH

**VIESMANN**

# VITODENS 200

*Industry-leading condensing technology for  
ultimate performance, reliability and comfort*



**new**

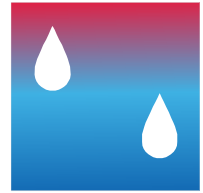
# VITODENS 200-W

Equipped with the industry's first intelligent combustion management system and powerful control technology, the new generation Vitodens 200 gas-fired wall-mount condensing boiler delivers unparalleled performance, reliability and comfort.



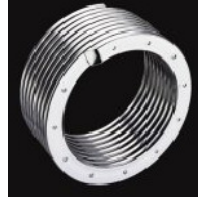
Viessmann Manufacturing Company Inc.  
750 McMurray Road  
Waterloo, ON N2V 2G5 • Canada  
Tel.: 1-800-387-7373 Fax: (519) 885-0887  
www.viessmann.ca

Viessmann Manufacturing Company (U.S.) Inc.  
45 Access Road  
Warwick, RI 02886 • U.S.A.  
Tel.: 1-800-288-0667 Fax: (401) 732-0590  
www.viessmann-us.com



## The benefits at a glance:

■ **Best Value in its Class** with new industry-leading technology and the most standard features.



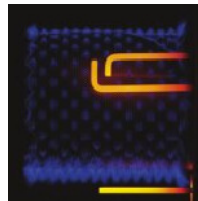
Viessmann made stainless steel Inox-Radial heat exchanger

**new** ■ **Highest Efficiency** of up to 98% at full modulation and up to 96.1% A.F.U.E.

■ **Lasting Performance** with industry-leading Viessmann made SA240 316 Ti stainless steel Inox-Radial heat exchanger constructed to CSA B51 and ASME Section IV.

**new** ■ **Low Emission Combustion** with Viessmann made stainless steel MatriX cylinder burner. Factory calibrated.

**new** ■ **Fast Installation and Reduced Maintenance** with Lambda Pro, industry-first intelligent combustion management system: Adjusts automatically to gas type and quality. No fuel conversion kit required.



Viessmann made stainless steel MatriX cylinder burner

**new** ■ **Powerful and User-Friendly** Viessmann Vitotronic on-board multi-function outdoor reset boiler and system control for multi-temperature space and DHW heating.

**new** ■ **Expanded Application Range** with increased capacity up to 370 MBH. Multi-boiler installation up to 1480 MBH with up to 4 boilers (models WB2B 17-45 and up).

**new** ■ **Greater Venting Flexibility** with increased vent length (up to 180') and multiple venting options.

- Horizontal or vertical sealed combustion coaxial venting.†
- Horizontal, vertical or hybrid sealed combustion double-pipe venting.\*
- Horizontal or vertical single-wall venting.\*

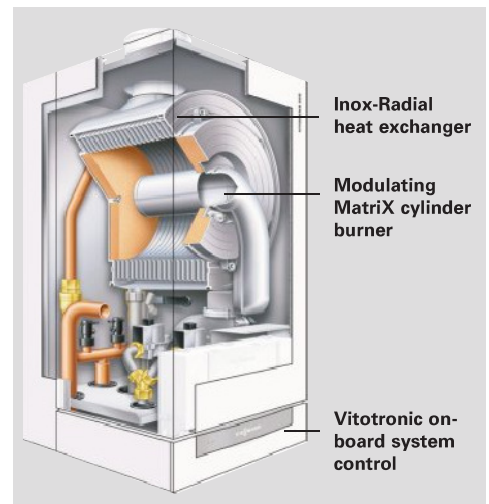
■ **Compact, Esthetic Product Design** and zero clearance to combustibles.



Now equipped with Lambda Pro: Industry's first intelligent combustion management system.

■ **Extremely Quiet Operation;** quieter than most refrigerators.

■ **True High-Altitude Operation** up to 10000 ft / 3000 m with simple electronic adjustment.



Inox-Radial heat exchanger

Modulating MatriX cylinder burner

Vitotronic on-board system control

VITODENS 200-W		WB2B	19	26	35	45	60	80	105
<b>Rated input range</b>		MBH	31-67	31-93	31-125	60-160	60-212	104-285	104-370
<b>Total dimensions</b>	Width	inches	17½	17½	17½	19	19	19	19
	Height	inches	33½	33½	33½	33½	33½	33½	33½
	Depth	inches	14	14	14	15	15	21	21
<b>Weight‡</b>		lbs	102	102	102	155	155	225	225

‡Weight does not include installation fittings.

†Factory supplied. \*Field supplied.



Information subject to change without notice.

Represented by: RST INC 3/2 University Ave, Westwood, MA 02090 781-320-9910(P) 781-320-9906(F) www.RSTreps.com